

Bulletin 42JS VisiSight™

An easy-to-apply global sensing solution in a small rectangular package



Allen-Bradley

Rockwell Automation introduces the new Allen-Bradley VisiSight family of small rectangular photoelectric sensors. Ideal for material handling, packaging and assembly applications, this new line also addresses the small form factor needs of the Life Sciences, Pharmaceutical, Food & Beverage and Home, Health & Beauty industries. The VisiSight also offers a wide range of sensing modes, mounting options and unique features that make it an optimal solution for global general purpose applications.

Visible light source and versatile package for optimal flexibility

The new Allen-Bradley® VisiSight line of general purpose photoelectric sensors offers a full range of sensing modes in a sealed, compact, cavity-free housing that minimizes the collection of dust and debris while allowing for easy sensor cleanup. The rectangular housing features industry standard 25.4mm (1in) mounting hole spacing, but can also be used with an optional snap-on 18mm nose-mount adaptor for additional application flexibility.

Plus, all models combine a visible red light source for ease of alignment during setup and maintenance. A stability indicator, which flashes if the signal level is too close to the detection threshold, provides further ease of alignment and warns of an unstable sensing situation such as the detection of a background that is too close to the target object.



The patented ASIC used in the VisiSight also offers linear sensitivity adjustment as well as excellent noise immunity. Diffuse models with 800mm (31.5in) sensing range provide adjustable sensitivity while polarized retroreflective models are available in adjustable or fixed sensitivity versions with 3.5m (11.5ft) sensing range. Transmitted beam models provide 10m (32.8ft) sensing distance and are also offered in infrared LED source models for superior crosstalk immunity.

Features and Benefits:

- Economical, global and easy-to-apply sensing solution
- Visible light source offered on all models for ease of alignment
- Industry standard 25.4mm (1in) mounting hole spacing and optional snap-on 18mm nose-mount adaptor for optimal application flexibility
- Patented ASIC design offers linear sensitivity adjustment, stability indication and excellent noise immunity
- Compact sealed housing and cavity-free design minimize collection of dust and debris while allowing for easy sensor cleanup
- Threaded metal M12 or M8 pigtail connection styles
- 360° visible LED status indicators
- Additional transmitted beam models available with infrared light source for superior cross talk immunity
- Input to disable light source on transmitted beam emitter

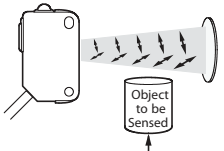
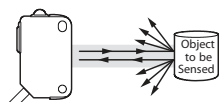
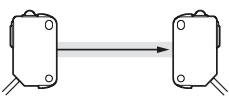
LISTEN.
THINK.
SOLVE.®



Allen-Bradley • Rockwell Software

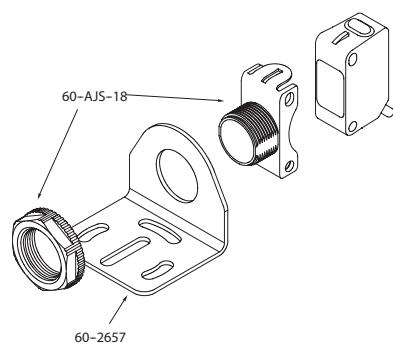
**Rockwell
Automation**

VisiSight Product Selection

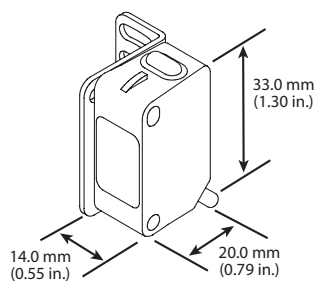
Sensing Mode (max. range)	Operating Voltage/Current	Sensing Distance	Output Energized	Output Type Capacity	Sensitivity Adjustment	Catalog Number ¹
 Polarized Retroreflective Emitter LED: Visible red 645 nm	10...30V DC 25mA max.	25mm...3.5m (0.98in...11.5ft)	Complementary light and dark operate	NPN	No adjustment	42JS-P2MNB1-F4
PNP				42JS-P2MPB1-F4		
NPN				Single-turn potentiometer	42JS-P2MNA2-F4	
PNP					42JS-P2MPA2-F4	
 Standard Diffuse Emitter LED: Visible red 645 nm		3mm...800mm (0.12in...31.5in)	Complementary light and dark operate	NPN	Single-turn potentiometer	42JS-D2MNA1-F4
PNP				42JS-D2MPA1-F4		
 Transmitted Beam Emitter LED: Visible red 645 nm		10m (32.8ft)	NA	NA	No adjustment	42JS-E2EZB1-F4
			Complementary light and dark operate	NPN	Single-turn potentiometer	42JS-R9MNA1-F4
				PNP		42JS-R9MPA1-F4
			NA	NA	No adjustment	42JS-E1EZB1-F4
			Complementary light and dark operate	NPN	Single-turn potentiometer	42JS-R9MNA2-F4
				PNP		42JS-R9MPA2-F4

¹The suffix -F4 denotes 4-pin DC micro connection type with 6-inch cable. For 4-pin DC pico QD with 6-inch cable replace the suffix -F4 with -Y4 (e.g. 42JS-P2MPB1-Y4). For 2 m cable without QD replace the suffix -F4 with -A2 (e.g. 42JS-P2MPB1-A2).

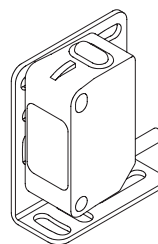
Accessories



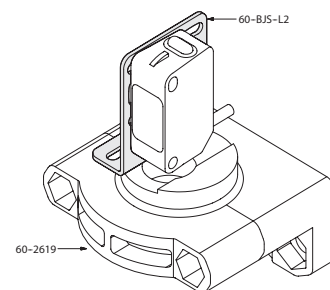
60-AJS-18
18mm Snap-On Adaptor



60-BJS-L1
Mounting Bracket



60-BJS-L2
Mounting Bracket



60-BJS-L2 with 60-2619
for Swivel/Tilt Mounting

www.rockwellautomation.com

Power, Control and Information Solutions Headquarters

Americas: Rockwell Automation, 1201 South Second Street, Milwaukee, WI 53204-2496 USA, Tel: (1) 414.382.2000, Fax: (1) 414.382.4444

Europe/Middle East/Africa: Rockwell Automation, Vorstlaan/Boulevard du Souverain 36, 1170 Brussels, Belgium, Tel: (32) 2 663 0600, Fax: (32) 2 663 0640

Asia Pacific: Rockwell Automation, Level 14, Core F, Cyberport 3, 100 Cyberport Road, Hong Kong, Tel: (852) 2887 4788, Fax: (852) 2508 1846