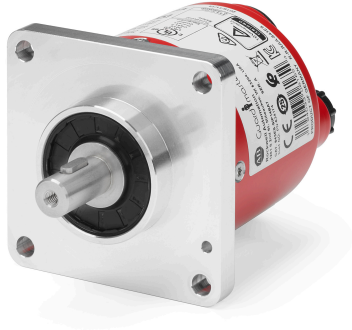


843ES CIP Safety Encoders

[843ES-MIP15BA7](#)



Representative Rendering, Not The Actual Product

843ES CIP Safety Encoders, Multi-turn (4096 turns), Solid shaft 12 mm, M12 Connector, 32,768 (15 bit) safety and 262,144 (18 bit) standard steps per revolution, 58 mm square flange

Product Details

CIP SAFETY ENCODERS SELECTION DATA	
Number of Turns	Multi-turn (4096 turns)
Mechanical Interface	Solid shaft 12 mm
Connector	M12 Connector
Resolution	32,768 (15 bit) safety and 262,144 (18 bit) standard steps per revolution
Flange	58 mm square flange
ACCESSORIES	
Power Media	DC Micro (M12) 4-pin Straight Female, Shielded, 22 AWG, 2m

Supporting Documentation and Downloads

- [843ES CIP Safety Encoder Photo](#)