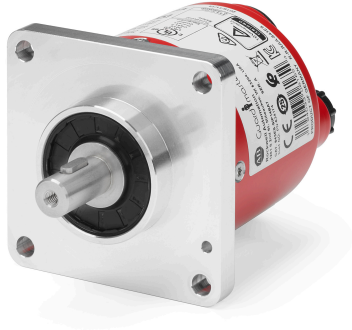


843ES CIP Safety Encoders

[843ES-MIP16BA7](#)



Representative Rendering, Not The Actual Product

843ES CIP Safety Encoders, Multi-turn (4096 turns), Solid shaft 3/8 in, M12 Connector, 32,768 (15 bit) safety and 262,144 (18 bit) standard steps per revolution, 58 mm square flange

Product Details

CIP SAFETY ENCODERS SELECTION DATA	
Number of Turns	Multi-turn (4096 turns)
Mechanical Interface	Solid shaft 3/8 in
Connector	M12 Connector
Resolution	32,768 (15 bit) safety and 262,144 (18 bit) standard steps per revolution
Flange	58 mm square flange
ACCESSORIES	
Power Media	DC Micro (M12) 4-pin Straight Female, Shielded, 22 AWG, 2m

Supporting Documentation and Downloads

- [843ES CIP Safety Encoder Photo](#)