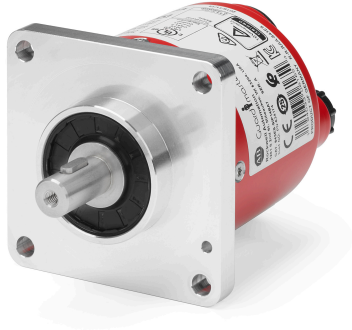


## 843ES CIP Safety Encoders

**843ES-SIP14BA7**



*Representative Rendering, Not The Actual Product*

843ES CIP Safety Encoders, Single-turn (1 turn), Solid shaft 10 mm, M12 Connector, 32,768 (15 bit) safety and 262,144 (18 bit) standard steps per revolution, 58 mm square flange

### Product Details

CIP SAFETY ENCODERS SELECTION DATA	
Number of Turns	Single-turn (1 turn)
Mechanical Interface	Solid shaft 10 mm
Connector	M12 Connector
Resolution	32,768 (15 bit) safety and 262,144 (18 bit) standard steps per revolution
Flange	58 mm square flange
ACCESSORIES	
Power Media	DC Micro (M12) 4-pin Straight Female, Shielded, 22 AWG, 2m

### Supporting Documentation and Downloads

- [843ES CIP Safety Encoder Photo](#)