

Product data sheet

Specifications



Operating mechanism, flange mounted, variable depth, handle mechanism, 12in handle, NEMA 4X enclosure

9422A8

Product availability: Stock - Normally stocked in distribution facility

Price*: 436.40 USD

Main

Product	Handle Mechanism
For Use With	9422TG2 disconnect switch 9422TG1 disconnect switch

Complementary

Product Type	Variable depth
Product destination	9422TG1 disconnect switch 9422TG2 disconnect switch
Enclosure Types	NEMA 4/4X enclosures
Handle Length	12 in (304.8 mm)

Ordering and shipping details

Category	US10CP121732
Discount Schedule	0CP1
GTIN	785901624905
Returnability	Yes
Country of origin	US

Packing Units

Unit Type of Package 1	PCE
Number of Units in Package 1	1
Package 1 Height	5.0000000000 in (12.7 cm)
Package 1 Width	12.300 in (31.242 cm)
Package 1 Length	23.300 in (59.182 cm)
Package 1 Weight	10.0002 lb(US) (4.536 kg)

Contractual warranty

Warranty	18 months
----------	-----------

Price is "List Price" and may be subject to a trade discount – check with your local distributor or retailer for actual price.

Disclaimer: This documentation is not intended as a substitute for and is not to be used for determining suitability or reliability of these products for specific user applications

Sustainability

Green Premium™ label is Schneider Electric's commitment to delivering products with best-in-class environmental performance. Green Premium promises compliance with the latest regulations, transparency on environmental impacts, as well as circular and low-CO₂ products.

Guide to assessing product sustainability is a white paper that clarifies global eco-label standards and how to interpret environmental declarations.

[Learn more about Green Premium >](#)

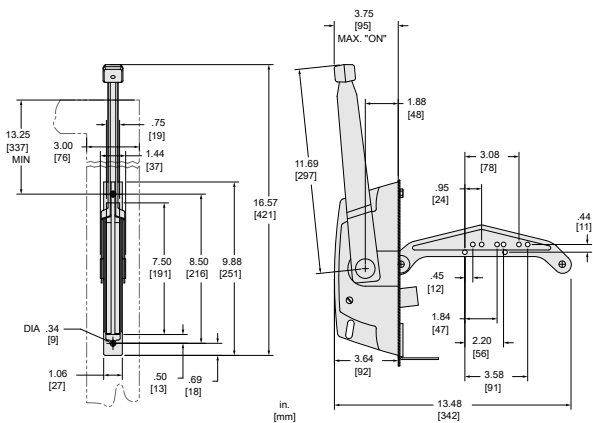
[Guide to assess a product's sustainability >](#)

Well-being performance

<div><div>✓</div><div>Reach Free Of Svhc</div></div>	
<div><div>✓</div><div>Toxic Heavy Metal Free</div></div>	
<div><div>✓</div><div>Mercury Free</div></div>	
<div><div>✓</div><div>Rohs Exemption Information</div></div>	<div>Yes</div>
<div><div>✓</div><div>Pvc Free</div></div>	
<div>Reach Regulation</div>	<div>REACH Declaration</div>
<div>Eu Rohs Directive</div>	<div><div>Compliant</div><div>EU RoHS Declaration</div></div>
<div>China Rohs Regulation</div>	<div><div>China RoHS declaration</div><div>Pro-active China RoHS declaration (out of China RoHS legal scope)</div></div>
<div>California Proposition 65</div>	<div>"WARNING: This product can expose you to chemicals including: Lead and lead compounds, which is known to the State of California to cause cancer and birth defects or other reproductive harm. For more information go to www.P65Warnings.ca.gov"</div>

Technical Illustration

Dimensions



TYPE	USAGE
A5	HANDLE MECHANISM COMPLETE FOR FIXED DEPTH INSTALLATION IN NEMA 1, 12, 3, 3R, AND 4 (SHEET METAL) ENCLOSURES.
A6	HANDLE MECHANISM COMPLETE FOR FIXED DEPTH INSTALLATION IN NEMA 4 (STAINLESS STEEL) ENCLOSURES.
A7	HANDLE MECHANISM COMPLETE FOR ADJUSTABLE DEPTH INSTALLATION IN NEMA 1, 12, 3, 3R, AND 4 (SHEET METAL) ENCLOSURES.
A8	HANDLE MECHANISM COMPLETE FOR ADJUSTABLE DEPTH INSTALLATION IN NEMA 4 (STAINLESS STEEL) ENCLOSURES.

ALL DIMENSIONS ARE APPROXIMATE.
REFER TO TECHNICAL DRAWINGS AND DOCUMENTATION FOR COMPLETE INFORMATION.
12 INCH HANDLES ARE FOR USE WITH 400A TYPE TG1 AND TG2 DISCONNECT SWITCHES ONLY.