

# Product data sheet

Specifications



## connection sub-base accessory - splitter sub-base - 16 channels

ABE7ACC02

Product availability: Non-Stock - Not normally stocked in distribution facility

Price\*: 148.50 USD

### Main

|                                       |                        |
|---------------------------------------|------------------------|
| Range of Product                      | Modicon ABE7           |
| Accessory / separate part designation | Splitter sub-base      |
| accessory / separate part type        | Splitter sub-base      |
| Accessory / separate part categor     | Connection accessories |
| Accessory / separate part destination | Connection sub-base    |
| Number of channels                    | 16                     |
| Quantity per Set                      | Set of 1               |

### Complementary

|                   |                         |
|-------------------|-------------------------|
| Channel splitting | 2 x 8                   |
| Net Weight        | 0.165 lb(US) (0.075 kg) |

### Ordering and shipping details

|                   |               |
|-------------------|---------------|
| Category          | US10CP222375  |
| Discount Schedule | 0CP2          |
| GTIN              | 3389110544824 |
| Returnability     | No            |
| Country of origin | FR            |

### Packing Units

|                              |                       |
|------------------------------|-----------------------|
| Unit Type of Package 1       | PCE                   |
| Number of Units in Package 1 | 1                     |
| Package 1 Height             | 2.283 in (5.800 cm)   |
| Package 1 Width              | 3.071 in (7.800 cm)   |
| Package 1 Length             | 2.165 in (5.500 cm)   |
| Package 1 Weight             | 2.716 oz (77.000 g)   |
| Unit Type of Package 2       | S03                   |
| Number of Units in Package 2 | 30                    |
| Package 2 Height             | 11.811 in (30.000 cm) |
| Package 2 Width              | 11.811 in (30.000 cm) |
| Package 2 Length             | 15.748 in (40.000 cm) |

Price is "List Price" and may be subject to a trade discount – check with your local distributor or retailer for actual price.

Disclaimer: This documentation is not intended as a substitute for and is not to be used for determining suitability or reliability of these products for specific user applications

|                  |                         |
|------------------|-------------------------|
| Package 2 Weight | 6.175 lb(US) (2.801 kg) |
|------------------|-------------------------|

## Contractual warranty

|          |           |
|----------|-----------|
| Warranty | 18 months |
|----------|-----------|

## Sustainability




**Green Premium™ label** is Schneider Electric's commitment to delivering products with best-in-class environmental performance. Green Premium promises compliance with the latest regulations, transparency on environmental impacts, as well as circular and low-CO<sub>2</sub> products.

**Guide to assessing product sustainability** is a white paper that clarifies global eco-label standards and how to interpret environmental declarations.

[Learn more about Green Premium >](#)

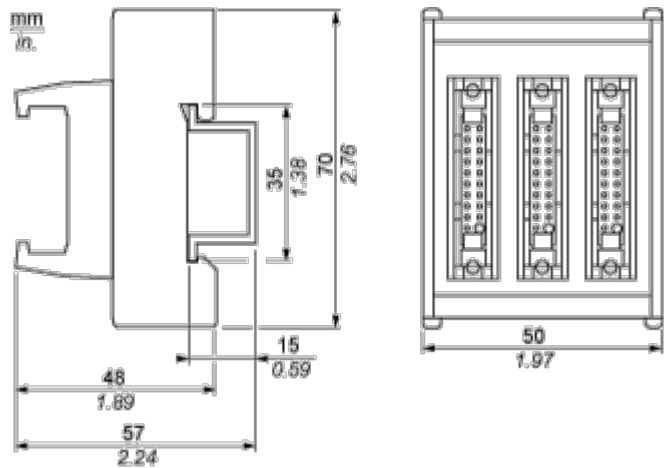
[Guide to assess a product's sustainability >](#)

## Well-being performance

|  |   |
|--|---|
|  Reach Free Of Svhc         |   |
|  Mercury Free               |   |
|  Rohs Exemption Information | Yes   |
| Reach Regulation   | <a href="#">REACH Declaration</a>   |
| Eu Rohs Directive  | Pro-active compliance (Product out of EU RoHS legal scope)  |
| China Rohs Regulation  | <a href="#">China RoHS declaration</a>  |
| Weee   | The product must be disposed on European Union markets following specific waste collection and never end up in rubbish bins.  |
| California Proposition 65  | WARNING: This product can expose you to chemicals including: Lead and lead compounds, which is known to the State of California to cause cancer and birth defects or other reproductive harm. For more information go to <a href="http://www.P65Warnings.ca.gov">www.P65Warnings.ca.gov</a> |

Dimensions Drawings

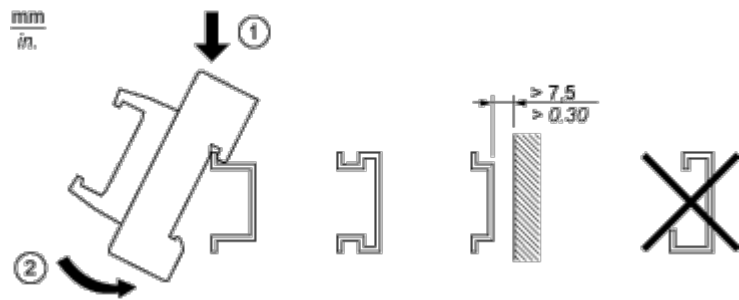
Dimensions



Mounting and Clearance

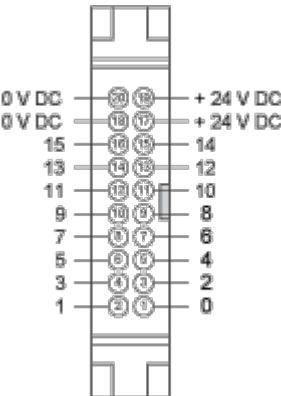
Mounting

---



Connections and Schema

HE10 16 Channels



Wiring Diagram

---

