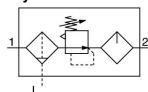


AC10A-A to AC40A-A

Symbol



How to Order

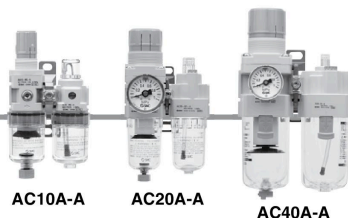
AC **30** A- **03** **DG** - - - A

1 2 3 4 5 6

- Option/Semi-standard: Select one each for a to l.
- Option/Attachment/Semi-standard symbol: When more than one specification is required, indicate in alphanumeric order.
Example) AC30A-F03DM-KSV-13NR-A

		Symbol	Description	①						
				Body size						
				10	20	30	40			
②	Pipe thread type	Nil	Metric thread (M5)	●	—	—	—			
		N <small>Note 1)</small>	Rc	—	●	●	●			
		F <small>Note 2)</small>	NPT	—	●	●	●			
			G	—	●	●	●			
+										
③	Port size	M5	M5	●	—	—	—			
		01	1/8	—	●	—	—			
		02	1/4	—	●	●	●			
		03	3/8	—	—	●	●			
		04	1/2	—	—	—	●			
		06	3/4	—	—	—	●			
+										
④	Option <small>Note 3)</small>	a	Float type auto drain	●	●	●	●			
		C <small>Note 4)</small>	N.C. (Normally closed) Drain port is closed when pressure is not applied.	●	●	●	●			
		D <small>Note 5)</small>	N.O. (Normally open) Drain port is open when pressure is not applied.	—	—	●	●			
		+								
	b	Pressure gauge <small>Note 6)</small>	Without pressure gauge	●	●	●	●			
			G	Round type pressure gauge (without limit indicator)	●	—	—	—		
				Round type pressure gauge (with limit indicator)	—	●	●	●		
			M	Round type pressure gauge (with color zone)	—	●	●	●		
+										
⑤	Attachment	c	Check valve	●	●	●	●			
		K	Mounting position: AW+K+AL	—	●	●	● <small>Note 7)</small>			
		+								
		d	Pressure switch	●	●	●	●			
	e	Pressure relief 3 port valve	Without attachment	●	●	●	●			
			V	Mounting position: AW+AL+V	—	●	●	●		
			+							
⑥	Semi-standard	f	Set pressure <small>Note 9)</small>	0.05 to 0.7 MPa setting	●	●	●	●		
				0.02 to 0.2 MPa setting	●	●	●	●		
		+								
		g	Bowl <small>Note 10)</small>	Nil	Polycarbonate bowl	●	●	●	●	
				2	Metal bowl	●	●	●	●	
				6	Nylon bowl	●	●	●	●	
				8	Metal bowl with level gauge	—	—	●	●	
				C	With bowl guard	—	●	— <small>Note 11)</small>	— <small>Note 11)</small>	
				6C	With bowl guard (Nylon bowl)	—	●	— <small>Note 12)</small>	— <small>Note 12)</small>	
		+								
		h	Filter <small>Note 13)</small> regulator drain port	Nil	With drain cock	●	●	●	●	
				J <small>Note 14)</small>	Drain guide 1/8	—	●	—	—	
	Drain guide 1/4			—	—	●	●			
W <small>Note 15)</small>	Drain cock with barb fitting (for ø6 x ø4 nylon tube)			—	—	●	●			

Air Combination **AC10A-A to AC40A-A Series**



	Symbol	Description	①			
			Body size			
			10	20	30	40
⑥ Semi-standard	i	Lubricator lubricant exhaust port	Nil	Without drain cock	●	●
		3 Note 16)	●	Lubricator with drain cock	●	●
	+					
	j	Exhaust mechanism	Nil	Relieving type	●	●
		N	●	Non-relieving type	●	●
	+					
	k	Flow direction	Nil	Flow direction: Left to right	●	●
		R	●	Flow direction: Right to left	●	●
	+					
	l	Pressure unit	Nil	Name plate and pressure gauge in imperial units: MPa	●	●
		Z Note 17)	○ Note 18)	Name plate, caution plate for bowl, and pressure gauge in imperial units: psi, °F	○ Note 18)	○ Note 18)

Note 1) Drain guide is NPT1/8 (applicable to the AC20A-A and NPT1/4 (applicable to the AC30A-A to AC40A-A). The auto drain port comes with ø3/8" One-touch fitting (applicable to the AC30A-A to AC40A-A).

Note 2) Drain guide is G1/8 (applicable to the AC20A-A and G1/4 (applicable to the AC30A-A to AC40A-A).

Note 3) Option G, M are not assembled and supplied loose at the time of shipment.

Note 4) When pressure is not applied, condensate which does not start the auto drain mechanism will be left in the bowl. Releasing the residual condensate before ending operations for the day is recommended.

Note 5) If the compressor is small (0.75 kW, discharge flow is less than 100 L/min(ANR)), air leakage from the drain cock may occur during start of operations. N.C. type is

recommended.

Note 6) When the pressure gauge is attached, a 1.0 MPa pressure gauge will be fitted for standard (0.7 MPa) type. 0.4 MPa pressure gauge for 0.2 MPa type (1.0 MPa pressure gauge only for the AC10A-A).

Note 7) Not available with piping port size: 06
Note 8) The bracket position varies depending on the pressure switch mounting.

Note 9) Pressure can be set higher than the specification pressure in some cases, but use pressure within the specification range.

Note 10) Refer to Chemical data on page 433 for chemical resistance of the bowl.

Note 11) A bowl guard is provided as standard equipment (polycarbonate).

Note 12) A bowl guard is provided as standard equipment (nylon).

Note 13) Float type auto drain: The combination of C and D is not possible.

Note 14) Without a valve function

Note 15) The combination of metal bowl: 2 and 8 is not available.
Note 16) When choosing with W: Filter regulator drain port, the drain cock of a lubricator will be with barb fitting.

Note 17) For pipe thread type: M5, NPT. This product is for overseas use only according to the new Measurement Law. (The SI unit type is provided for use in Japan.) MPa and psi are shown together on the pressure unit. Cannot be used with M: Round pressure gauge (with color zone). Available by request for special.

Note 18) ○: For pipe thread type: M5, NPT only

Standard Specifications

Model		AC10A-A	AC20A-A	AC30A-A	AC40A-A	AC40A-06-A
Component	Filter Regulator [AW]	AW10-A	AW20-A	AW30-A	AW40-A	AW40-06-A
	Lubricator [AL]	AL10-A	AL20-A	AL30-A	AL40-A	AL40-06-A
Port size		M5 x 0.8	1/8, 1/4	1/4, 3/8	1/4, 3/8, 1/2	3/4
Pressure gauge port size [AW]		1/16	1/8			
Fluid		Air				
Ambient and fluid temperature		-5 to 60 °C (with no freezing)				
Proof pressure		1.5 MPa				
Maximum operating pressure		1.0 MPa				
Set pressure range [AW]		0.05 to 0.7 MPa				
Nominal filtration rating [AW]		5 μm				
Recommended lubricant [AL]		Class 1 turbine oil (ISO VG32)				
Bowl material [AW/AL]		Polycarbonate				
Bowl guard [AW/AL]		—	Semi-standard (Steel)	Standard (Polycarbonate)		
Construction [AW]		Relieving type				
Weight (kg)		0.20	0.34	0.67	1.24	1.35