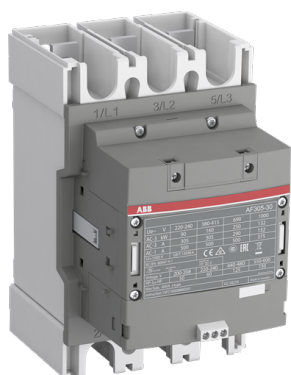


PRODUCT-DETAILS

AF305-30-00-34

AF305-30-00-34 Contactor



General Information

Extended Product Type	AF305-30-00-34
Product ID	1SFL587002R3400
EAN	7320500504635
Catalog Description	AF305-30-00-34 Contactor

Long Description	<p>The AF305-30-00-34 is a 3 pole - 1000 V IEC or 600 V UL contactor with Main Circuit Bars, controlling motors up to 160 kW / 400 V AC (AC-3) or 250 hp / 480 V UL and switching power circuits up to 500 A (AC-1) or 400 A UL general use. Thanks to the AF technology, the contactor has a wide control voltage range (250-500 V 50/60 Hz and DC), managing large control voltage variations, reducing panel energy consumptions and ensuring distinct operations in unstable networks. Furthermore, surge protection is built-in, offering a compact solution. AF contactors have a block type design, can be easily extended with add-on auxiliary contact blocks and an additional wide range of accessories.</p>
------------------	---

Ordering

Minimum Order Quantity	1 piece
Customs Tariff Number	85364900

Popular Downloads

Data Sheet, Technical Information	1SBC100192C02
-----------------------------------	---------------

Dimensions

Product Net Width	140 mm
Product Net Depth / Length	195.5 mm
Product Net Height	225 mm
Product Net Weight	3.9 kg

Technical

Number of Main Contacts NO	3
Number of Main Contacts NC	0
Number of Auxiliary Contacts NO	0
Number of Auxiliary Contacts NC	0
Rated Operational Voltage	Main Circuit 1000 V
Rated Frequency (f)	Main Circuit 50 Hz
Conventional Free-air Thermal Current (I_{th})	acc. to IEC 60947-4-1, Open Contactors $q = 40\text{ °C}$ 500 A
Rated Operational Current AC-1 (I_e)	(1000 V) 40 °C 375 A (1000 V) 60 °C 325 A (1000 V) 70 °C 260 A (690 V) 40 °C 500 A (690 V) 70 °C 325 A
Rated Operational Current AC-3 (I_e)	(415 V) 55 °C 305 A (440 V) 55 °C 305 A (500 V) 55 °C 290 A (690 V) 55 °C 290 A (1000 V) 55 °C 131 A (380 / 400 V) 55 °C 305 A (220 / 230 / 240 V) 55 °C 305
Rated Operational Power AC-3 (P_e)	(415 V) 160 kW (440 V) 160 kW (500 V) 200 kW (690 V) 250 kW (1000 V) 185 kW (380 / 400 V) 160 kW (220 / 230 / 240 V) 90 kW
Rated Breaking Capacity AC-3	8 x I_e AC-3
Rated Making Capacity AC-3	10 x I_e AC-3
Short-Circuit Protective Devices	gG Type Fuses 500 A
Rated Short-time Withstand Current Low Voltage (I_{cw})	at 40 °C Ambient Temp, in Free Air, from a Cold State 10 s 2440 A at 40 °C Ambient Temp, in Free Air, from a Cold State 15 min 500 A at 40 °C Ambient Temp, in Free Air, from a Cold State 1 min 996 A at 40 °C Ambient Temp, in Free Air, from a Cold State 1 s 3050 A at 40 °C Ambient Temp, in Free Air, from a Cold State 30 s 1409 A
Maximum Electrical Switching Frequency	(AC-1) 300 cycles per hour (AC-2 / AC-4) 150 cycles per hour (AC-3) 300 cycles per hour

Rated Operational Current DC-1 (I_e)	(110 V) 1-Pole, 40 °C 500 A (220 V) 2 Poles in Series, 40 °C 500 A (220 V) 3 Poles in Series, 40 °C 500 A
Rated Insulation Voltage (U_i)	acc. to IEC 60947-4-1 and VDE 0110 (Gr. C) 1000 V acc. to UL/CSA 600 V
Rated Impulse Withstand Voltage (U_{imp})	8 kV
Mechanical Durability	5 million
Maximum Mechanical Switching Frequency	300 cycles per hour
Coil Operating Limits	(acc. to IEC 60947-4-1) U_c (at $\theta \leq 70$ °C)
Rated Control Circuit Voltage (U_c)	50 Hz 250 ... 500 V 60 Hz 250 ... 500 V DC Operation 250 ... 500 V
Coil Consumption	Holding at Max. Rated Control Circuit Voltage 50 Hz 20.4 V·A Holding at Max. Rated Control Circuit Voltage 60 Hz 20.4 V·A Pull-in at Max. Rated Control Circuit Voltage 50 Hz 550 V·A Pull-in at Max. Rated Control Circuit Voltage 60 Hz 550 V·A Pull-in at Max. Rated Control Circuit Voltage DC 650 W
Operate Time	Between Coil De-energization and NO Contact Opening 37 ... 47 ms Between Coil Energization and NO Contact Closing 25 ... 55 ms
Degree of Protection	acc. to IEC 60529, IEC 60947-1, EN 60529 Auxiliary Terminals IP40
Terminal Type	Main Circuit: Bars

Technical UL/CSA

Maximum Operating Voltage UL/CSA	Main Circuit 1000 V
General Use Rating UL/CSA	(600 V AC) 400 A

Environmental

Ambient Air Temperature	Close to Contactor Fitted with Thermal O/L Relay (0.85 ... 1.1 U_c) -25 ... 55 °C Close to Contactor without Thermal O/L Relay (0.85 ... 1.1 U_c) -40 ... 70 °C Close to Contactor for Storage -40 ... +70 °C
Maximum Operating Altitude Permissible	Without Derating 3000 m
RoHS Status	Following EU Directive 2011/65/EU and Amendment 2015/863 July 22, 2019

Certificates and Declarations (Document Number)

ABS Certificate	14-LD1092198-PDA
BV Certificate	BV_36353_A0BV
CB Certificate	SE-89316
CCS Certificate	GB14T00030
CQC Certificate	CQC2014010304676670 CQC2014010304673866
cUL Certificate	20121217-E36588
Declaration of Conformity - CCC	2020980304001305 2020980304001068
Declaration of Conformity - CE	2CMT2015-005439

Declaration of Conformity - UKCA	2CMT2020-006118
DNV Certificate	DNV_E-14043
DNV GL Certificate	DNV_E-14043
EAC Certificate	9AKK107046A8618
Environmental Information	2CMT004732 1SAC200043H0005
GL Certificate	GL_95073-14HH
Instructions and Manuals	1SFC100008M0201
LR Certificate	LR_14_70011(E1)
PRS Certificate	TE_2092_880423_16
RINA Certificate	ELE060313XG_002
RMRS Certificate	9AKK107045A6978
RoHS Information	2CMT2015-005439
UL Listing Card	UL_E36588

Container Information

Package Level 1 Units	box 1 piece
Package Level 1 Width	263 mm
Package Level 1 Depth / Length	203 mm
Package Level 1 Height	289 mm
Package Level 1 Gross Weight	4.6 kg
Package Level 1 EAN	7320500504635

Classifications

Object Classification Code	Q
ETIM 4	EC000066 - Magnet contactor, AC-switching
ETIM 5	EC000066 - Magnet contactor, AC-switching
ETIM 6	EC000066 - Power contactor, AC switching
ETIM 7	EC000066 - Power contactor, AC switching
ETIM 8	EC000066 - Power contactor, AC switching
eClass	V11.0 : 27371003
UNSPSC	39121529
IDEA Granular Category Code (IGCC)	4755 >> Contactors
E-Number (Finland)	3707530

Categories

Low Voltage Products and Systems → Control Products → Contactors → Block Contactors

