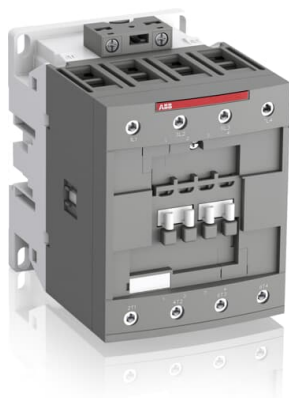


PRODUCT-DETAILS

AF80-40-00-13

AF80-40-00-13 100-250V50/60HZ-DC Contactor



General Information

Extended Product Type	AF80-40-00-13
Product ID	1SBL397201R1300
EAN	3471523133730
Catalog Description	AF80-40-00-13 100-250V50/60HZ-DC Contactor
Long Description	The AF80-40-00-13 is a 4 pole - 1000 V IEC or 600 UL contactor with screw terminals, controlling motors up to 37 kW / 400 V AC (AC-3) and switching power circuits up to 125 A (AC-1) or 105 A UL general use. Thanks to the AF technology, the contactor has a wide control voltage range (100-250 V 50/60 Hz and DC), managing large control voltage variations, reducing panel energy consumptions and ensuring distinct operations in unstable networks. Furthermore, surge protection is built-in, offering a compact solution. AF contactors have a block type design, can be easily extended with add-on auxiliary contact blocks and an additional wide range of accessories.

Ordering

Minimum Order Quantity	1 piece
Customs Tariff Number	85364900

Popular Downloads

Instructions and Manuals	1SBC101047M6801
Dimension Diagram	DNV_TAE00001AF-4

Dimensions

Product Net Width	90 mm
Product Net Depth / Length	116 mm
Product Net Height	125.5 mm
Product Net Weight	1.44 kg

Technical

Number of Main Contacts NO	4
Number of Main Contacts NC	0
Number of Auxiliary Contacts NO	0
Number of Auxiliary Contacts NC	0
Rated Operational Voltage	Main Circuit 1000 V
Rated Frequency (f)	Main Circuit 50 / 60 Hz
Conventional Free-air Thermal Current (I_{th})	acc. to IEC 60947-4-1, Open Contactors $q = 40^\circ\text{C}$ 125 A
Rated Operational Current AC-1 (I_e)	(690 V) 40°C 125 A (690 V) 60°C 105 A (690 V) 70°C 90 A
Rated Operational Current AC-3 (I_e)	(415 V) 60°C 80 A (440 V) 60°C 80 A (500 V) 60°C 65 A (690 V) 60°C 49 A (1000 V) 60°C 25 A (380 / 400 V) 60°C 80 A (220 / 230 / 240 V) 60°C 80 A
Rated Operational Power AC-3 (P_e)	(415 V) 45 kW (440 V) 45 kW (500 V) 45 kW (690 V) 45 kW (1000 V) 35 kW (380 / 400 V) 37 kW (220 / 230 / 240 V) 22 kW
Rated Short-time Withstand Current Low Voltage (I_{cw})	at 40°C Ambient Temp, in Free Air, from a Cold State 10 s 780 A at 40°C Ambient Temp, in Free Air, from a Cold State 15 min 140 A at 40°C Ambient Temp, in Free Air, from a Cold State 1 min 300 A at 40°C Ambient Temp, in Free Air, from a Cold State 1 s 1200 A at 40°C Ambient Temp, in Free Air, from a Cold State 30 s 450 A for 1 s -empty- A
Maximum Breaking Capacity	$\cos \phi = 0.45$ ($\cos \phi = 0.35$ for $I_e > 100$ A) at 440 V 1150 A $\cos \phi = 0.45$ ($\cos \phi = 0.35$ for $I_e > 100$ A) at 690 V 750 A
Maximum Electrical Switching Frequency	(AC-1) 600 cycles per hour
Rated Insulation Voltage (U_i)	acc. to IEC 60947-4-1 and VDE 0110 (Gr. C) 1000 V acc. to UL/CSA 600 V
Rated Impulse Withstand Voltage (U_{imp})	8 kV
Maximum Mechanical Switching Frequency	3600 cycles per hour
Rated Control Circuit Voltage (U_c)	50 Hz 100 ... 250 V 60 Hz 100 ... 250 V DC Operation 100 ... 250 V
Mounting on DIN Rail	TH35-15 (35 x 15 mm Mounting Rail) acc. to IEC 60715
Mounting by Screws (not supplied)	2 x M4 or 2 x M6 screws placed diagonally
Connecting Capacity Main Circuit	Flexible with Ferrule 1/2x 6 ... 50 mm ² Rigid 1x 6 ... 70 mm ² Rigid 2x 6 ... 50 mm ²

Connecting Capacity Control Circuit	Flexible with Ferrule 1/2x 0.75 ... 2.5 mm ² Rigid 1/2x 1 ... 2.5 mm ²
Wire Stripping Length	Main Circuit 17 mm
Degree of Protection	acc. to IEC 60529, IEC 60947-1, EN 60529 Coil Terminals IP20 acc. to IEC 60529, IEC 60947-1, EN 60529 Main Terminals IP10
Terminal Type	Screw Terminals

Technical UL/CSA

General Use Rating UL/CSA	(600 V AC) 105 A
Horsepower Rating UL/CSA	(120 V AC) Single Phase 7-1/2 hp (200 ... 208 V AC) Three Phase 25 hp (220 ... 240 V AC) Three Phase 30 hp (240 V AC) Single Phase 15 hp (440 ... 480 V AC) Three Phase 60 hp (550 ... 600 V AC) Three Phase 75 hp

Environmental

Ambient Air Temperature	Close to Contactor for Storage -60 ... +80 °C Near Contactor for Operation in Free Air -40 ... 70 °C
Climatic Withstand	Category B according to IEC 60947-1 Annex Q
Maximum Operating Altitude Permissible	Without Derating 3000 m
Resistance to Vibrations acc. to IEC 60068-2-6	5 ... 300 Hz 3 g Closed position / 2 g Open position
RoHS Status	Following EU Directive 2011/65/EU

Certificates and Declarations (Document Number)

ABS Certificate	ABS_20-2060694-PDA
BV Certificate	BV_2634H36994A
CB Certificate	CB_SE-96557M2
CCC Certificate	CCC_2013010304646569
CQC Certificate	CQC2013010304646569
Declaration of Conformity - CCC	2020980304001255
Declaration of Conformity - CE	1SBD250001U1000
Declaration of Conformity - UKCA	1SBD250032U1000
EAC Certificate	EAC_RU_FRME77B03447
GL Certificate	DNV-GL_TAE00001AF-3
Instructions and Manuals	1SBC101047M6801
KC Certificate	KC_HW02016-15013C
LR Certificate	LRS_1300087E1
RMRS Certificate	RMRS_1400682124
RoHS Information	1SBD250001U1000
UL Certificate	UL_20141124-E312527-14-2
UL Listing Card	UL_E312527

Container Information

Package Level 1 Units	box 1 piece
Package Level 1 Width	150 mm
Package Level 1 Depth / Length	150 mm

Package Level 1 Height	103 mm
Package Level 1 Gross Weight	1.57 kg
Package Level 1 EAN	3471523133730
Package Level 2 Units	box 8 piece
Package Level 2 Width	250 mm
Package Level 2 Depth / Length	300 mm
Package Level 2 Height	300 mm
Package Level 2 Gross Weight	12.56 kg
Package Level 3 Units	192 piece

Classifications

Object Classification Code		Q
ETIM 4	EC000066 - Magnet contactor, AC-switching	
ETIM 5	EC000066 - Magnet contactor, AC-switching	
ETIM 6	EC000066 - Power contactor, AC switching	
ETIM 7	EC000066 - Power contactor, AC switching	
ETIM 8	EC000066 - Power contactor, AC switching	
eClass		V11.0 : 27371003
UNSPSC		39121529
E-Number (Finland)		3707460
E-Number (Sweden)		3210315

Categories

Low Voltage Products and Systems → Control Products → Contactors → Block Contactors

