

Regulator AR10 to 60

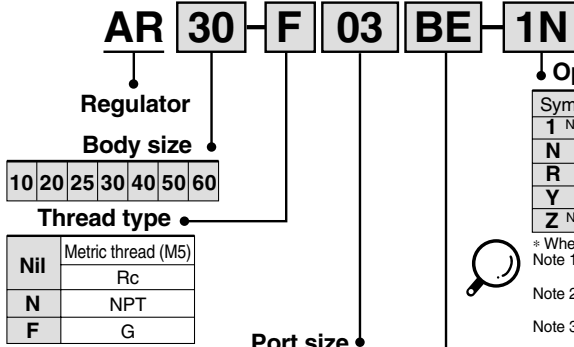
How to Order



AR20



AR40



Symbol	Port size	Body size						
		10	20	25	30	40	50	60
M5	M5	●	—	—	—	—	—	—
01	1/8	—	●	—	—	—	—	—
02	1/4	—	●	●	●	●	—	—
03	3/8	—	—	●	●	●	—	—
04	1/2	—	—	—	—	●	—	—
06	3/4	—	—	—	—	●	●	—
10	1	—	—	—	—	—	●	●

Optional specifications

Symbol	Description	Applicable model
1 ^{Note 2)}	0.02 to 0.2MPa setting	AR10 to 60
N	Non-relieving	AR10 to 60
R	Flow direction: Right to left	AR10 to 60
Y	Upward handle	AR10 to 60
Z ^{Note 3)}	Name plate and pressure gauge in imperial units (PSI, °F)	AR10 to 60

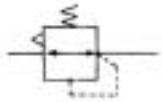
* When more than one specification is required, indicate in ascending alphanumeric order.
 Note 1) This product is for overseas use only according to the new Measurement Law.
 (The SI unit type is provided for use in Japan.)
 Note 2) The only difference from the standard specifications is the adjusting spring for the regulator. It does not restrict the setting of 0.2MPa or more.
 Note 3) For M5 and NPT thread types.

Accessories

Symbol	Description	Applicable model
Nil	—	—
B	With bracket	AR10 to 60
E	With square embedded type pressure gauge (with limit indicator)	AR20 to 60
G	With round pressure gauge (without limit indicator)	AR10
	With round pressure gauge (with limit indicator)	AR20 to 60
H	With set nut (for panel mount)	AR10 to 40

Note 1) Optional parts are not assembled and are supplied loose at the time of shipment (except for option E).

JIS symbol



Page 41

Accessory/Optional specification combinations

⊙ : Combination available
 ○ : Varies depending on the model
 ◻ : Combination not available
 △ : Available only with NPT thread

Combination	Symbol	Accessory				Optional specification					Applicable regulator			
		B	E	G	H	1	N	R	Y	Z	AR10	AR20 to 40	AR50 to 60	
Accessories														
With bracket (with set nut)	B	○	○	○	○	○	○	○	○	△	○	○	○	
Square embedded type pressure gauge	E	⊙	⊙	⊙	⊙	⊙	⊙	⊙	⊙	△	⊙	⊙	⊙	
Round pressure gauge	G	⊙	○	○	○	○	○	○	○	△	○	○	○	
With set nut (for panel mount)	H	○	○	○	○	○	○	○	○	△	○	○	○	
Optional specifications														
0.02 to 0.2MPa setting	-1	⊙	○	○	○	○	○	○	○	△	○	○	○	
Non-relieving type	-N	⊙	○	○	○	○	○	○	○	△	○	○	○	
Flow direction: Right to left	-R	⊙	○	○	○	○	○	○	○	△	○	○	○	
Upward handle	-Y	⊙	○	○	○	○	○	○	○	△	○	○	○	
Name plate and pressure gauge in imperial units (PSI, °F)	-Z	△	△	△	△	△	△	△	△	△	△	△	△	

Standard specifications

Model	AR10	AR20	AR25	AR30	AR40	AR40-06	AR50	AR60
Port sizes	M5 x 0.8	1/8, 1/4	1/4, 3/8	1/4, 3/8	1/4, 3/8, 1/2	3/4	3/4, 1	1
Fluid	Air							
Proof pressure	1.5MPa							
Maximum operating pressure	1.0MPa							
Set pressure range	0.05 to 0.7MPa	0.05 to 0.85MPa						
Pressure gauge port size ^{Note 1)}	Rc 1/16 ^{Note 2)}	Rc, NPT, G 1/8	Rc, NPT, G 1/8	Rc, NPT, G 1/8	Rc, NPT, G 1/4	Rc, NPT, G 1/4	Rc, NPT, G 1/4	Rc, NPT, G 1/4
Relief pressure	Set pressure + 0.05MPa ^{Note 3)} [at relief flow rate of 0.1L/min (ANR)]							
Ambient and fluid temperature	-5 to 60°C (with no freezing)							
Construction	Relieving type							
Weight (kg)	0.06	0.26	0.21	0.29	0.44	0.47	1.17	1.22

Note 1) Pressure gauge connection threads are not required for regulator with a square embedded type pressure gauge (AR20 to AR60).
 Note 2) Use a bushing (part no: 131368) when connecting the R 1/8 pressure gauge to the R 1/16 gauge port.
 Note 3) Except for AR10.

Accessory part no.

Applicable model	AR10	AR20	AR25	AR30	AR40	AR40-06	AR50	AR60		
Accessory										
Bracket assembly ^{Note 1)}	AR10P-270AS	AR20P-270AS	AR25P-270AS	AR30P-270AS	AR40P-270AS	AR40P-270AS	AR50P-270AS ^{Note 5)}	AR60P-270AS ^{Note 5)}		
Set nut	AR10P-260S	AR20P-260S	AR25P-260S	AR30P-260S	AR40P-260S	AR40P-260S	— ^{Note 6)}	— ^{Note 6)}		
Pressure gauge ^{Note 2)}	1MPa	Round	G27-10-R1	G36-10-□01	G36-10-□01	G36-10-□01	G46-10-□02	G46-10-□02	G46-10-□02	
		Square embedded type ^{Note 4)}	—	GC3-10AS	GC3-10AS	GC3-10AS	GC3-10AS	GC3-10AS	GC3-10AS	GC3-10AS
	0.2MPa	Round	G27-10-R1 ^{Note 3)}	G36-2-□01	G36-2-□01	G36-2-□01	G46-2-□02	G46-2-□02	G46-2-□02	G46-2-□02
		Square embedded type ^{Note 4)}	—	GC3-2AS	GC3-2AS	GC3-2AS	GC3-2AS	GC3-2AS	GC3-2AS	GC3-2AS

Note 1) Assembly includes a bracket and set nuts.
 Note 2) □ in part numbers for a round pressure gauge indicates a type of connection thread. No indication is necessary for R; however, indicate N for NPT.
 Note 3) For 1.0MPa.
 Note 4) Includes one O-ring and 2 mounting screws.
 Note 5) Assembly includes a bracket and 2 mounting screws.
 Note 6) Contact SMC regarding the set nuts for AR50 and AR60.
 Contact SMC regarding the connection thread NPT and pressure gauge supply for PSI unit specifications.