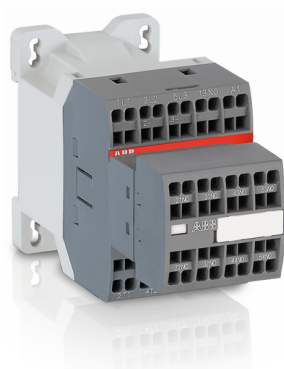


PRODUCT-DETAILS

AS12-30-32S-25

AS12-30-32S-25 220V50/60HZ Contactor



General Information

Extended Product Type	AS12-30-32S-25
Product ID	1SBL111004R2532
EAN	3471523067257
Catalog Description	AS12-30-32S-25 220V50/60HZ Contactor
Long Description	<p>AS12 contactors are mainly used for controlling 3-phase motors and generally for controlling power circuits up to 690 V AC or 220 V DC. They are mainly used for controlling 3-phase motors, non-inductive or slightly inductive loads. The AS..S contactors are the spring terminal version of the AS... range. The AS... series 2-stack 3-pole contactors are of the block type design. - Main poles and auxiliary contact blocks: 1st stack with 3 main poles and 1 N.O. built-in auxiliary contact, with a non-removable front-mounted 2 N.O. + 2 N.C. auxiliary contact block (mechanically-linked auxiliary contacts compliant with Annex L of IEC 60947-5-1 including the "Mechanically Linked" symbol on the contactor side. N.C. mirror contacts compliant with Annex F of IEC 60947-4-1) - Control circuit: AC operated with laminated magnet circuit - Accessories: a wide range of accessories is available.</p>

Classifications

Object Classification Code	Q
ETIM 4	EC000066 - Magnet contactor, AC-switching
ETIM 5	EC000066 - Magnet contactor, AC-switching
ETIM 6	EC000066 - Power contactor, AC switching
ETIM 7	EC000066 - Power contactor, AC switching
UNSPSC	39121529
IDEA Granular Category Code (IGCC)	4755 >> Contactors

Container Information

Package Level 1 Units	1 piece
Package Level 1 Width	72 mm
Package Level 1 Depth / Length	115 mm
Package Level 1 Height	48 mm
Package Level 1 Gross Weight	0.26 kg
Package Level 1 EAN	3471523067257
Package Level 2 Units	32 piece
Package Level 2 Width	250 mm
Package Level 2 Depth / Length	195 mm
Package Level 2 Height	315 mm
Package Level 2 Gross Weight	8.32 kg
Package Level 3 Units	768 piece

Certificates and Declarations (Document Number)

CB Certificate	CB_CN13475-M1
CCC Certificate	CCC_2007010309251577
Declaration of Conformity - CE	1SBD250014U1000
Environmental Information	1SBD250156E1000
GOST Certificate	GOST_POCCCNME77B07822.pdf
Instructions and Manuals	1SBC101020M9701
RoHS Information	1SBD251005E1002
UL Certificate	UL_20120917-E312527-1-1
UL Listing Card	UL_E312527

Technical UL/CSA

General Use Rating UL/CSA	(600 V AC) 12 A
Horsepower Rating UL/CSA	(120 V AC) Single Phase 1/2 Hp (240 V AC) Single Phase 1.5 Hp (200 ... 208 V AC) Three Phase 2 Hp (220 ... 240 V AC) Three Phase 3 Hp (440 ... 480 V AC) Three Phase 7.5 Hp (550 ... 600 V AC) Three Phase 10 Hp

Environmental

Ambient Air Temperature	Close to Contactor for Storage -60 ... +80 °C Close to Contactor Fitted with Thermal O/L Relay -25 ... +60 °C Close to Contactor without Thermal O/L Relay -40 ... +70 °C
Climatic Withstand	Category B according to IEC 60947-1 Annex Q
Maximum Operating Altitude Permissible	3000 m
Resistance to Vibrations acc. to IEC 60068-2-6	5 ... 300 Hz 3 g Closed position / 2 g Open position
Resistance to Shock acc. to IEC 60068-2-27	Closed, Shock Direction: B1 10 g Closed, Shock Direction: C1 20 g Closed, Shock Direction: C2 20 g Open, Shock Direction: B1 5 g

Open, Shock Direction: C1 9 g
 Open, Shock Direction: C2 14 g
 Shock Direction: A 20 g
 Shock Direction: B2 15 g

RoHS Status

Following EU Directive 2011/65/EU

Technical

Number of Main Contacts NO	3
Number of Main Contacts NC	0
Number of Auxiliary Contacts NO	3
Number of Auxiliary Contacts NC	2
Standards	IEC 60947-1 / 60947-4-1 and EN 60947-1 / 60947-4-1, UL 508, CSA C22.2 N° 14
Rated Operational Voltage	Auxiliary Circuit 690 V Main Circuit 690 V
Rated Frequency (f)	Auxiliary Circuit 50 / 60 Hz Main Circuit 50 / 60 Hz
Conventional Free-air Thermal Current (I_{th})	acc. to IEC 60947-4-1, Open Contactors q = 40 °C 22 A acc. to IEC 60947-5-1, q = 40 °C 10 A
Rated Operational Current AC-1 (I_e)	(690 V) 40 °C 22 A (690 V) 60 °C 17 A (690 V) 70 °C 14 A
Rated Operational Current AC-3 (I_e)	(220 / 230 / 240 V) 60 °C 12 A (380 / 400 V) 60 °C 12 A (415 V) 60 °C 12 A (440 V) 60 °C 11 A (500 V) 60 °C 11 A (690 V) 60 °C 7 A
Rated Operational Power AC-3 (P_e)	(220 / 230 / 240 V) 3 kW (400 V) 5.5 kW (415 V) 5.5 kW (440 V) 5.5 kW (500 V) 5.5 kW (690 V) 5.5 kW
Rated Operational Current AC-15 (I_e)	(220 / 240 V) 4 A (24 / 127 V) 6 A (400 / 440 V) 3 A (500 V) 2 A (690 V) 2 A
Rated Short-time Withstand Current (I_{cw})	at 40 °C Ambient Temp, in Free Air, from a Cold State 10 s 124 A at 40 °C Ambient Temp, in Free Air, from a Cold State 15 min 22 A at 40 °C Ambient Temp, in Free Air, from a Cold State 1 min 55 A at 40 °C Ambient Temp, in Free Air, from a Cold State 1 s 250 A at 40 °C Ambient Temp, in Free Air, from a Cold State 30 s 75 A for 0.1 s 140 A for 1 s 100 A
Maximum Breaking Capacity	cos phi=0.45 (cos phi=0.35 for $I_e > 100$ A) at 440 V 155 A cos phi=0.45 (cos phi=0.35 for $I_e > 100$ A) at 690 V 90 A
Maximum Electrical Switching Frequency	AC-1 600 cycles per hour AC-15 1200 cycles per hour AC-2 / AC-4 300 cycles per hour AC-3 1200 cycles per hour DC-13 900 cycles per hour
Rated Operational Current DC-13 (I_e)	(110 V) 0.55 A / 60 W (220 V) 0.27 A / 60 W (125 V) 0.55 A / 69 W (24 V) 6 A / 144 W (250 V) 0.27 A / 68 W (48 V) 2.8 A / 134 W (72 V) 1 A / 72 W
Rated Insulation Voltage (U_i)	acc. to UL/CSA 600 V acc. to IEC 60947-4-1 and VDE 0110 (Gr. C) 690 V acc. to IEC 60947-5-1 and VDE 0110 (Gr. C) 690 V

Rated Impulse Withstand Voltage (U _{imp})	6 kV
Maximum Mechanical Switching Frequency	3600 cycles per hour
Rated Control Circuit Voltage (U _c)	50 Hz 220 V 60 Hz 220 V
Operate Time	Between Coil De-energization and NC Contact Closing 7 ... 22 ms Between Coil De-energization and NO Contact Opening 5 ... 19 ms Between Coil Energization and NC Contact Opening 6 ... 18 ms Between Coil Energization and NO Contact Closing 9 ... 24 ms
Connecting Capacity Main Circuit	Flexible with Insulated Ferrule 1/2x 0.75 ... 1.5 mm ² Flexible with Ferrule 1/2x 0.75 ... 2.5 mm ² Rigid 1/2x 0.75 ... 2.5 mm ²
Connecting Capacity Auxiliary Circuit	Flexible with Ferrule 1/2x 0.75 ... 2.5 mm ² Flexible with Insulated Ferrule 1/2x 0.75 ... 1.5 mm ² Rigid 1/2x 0.75 ... 2.5 mm ²
Connecting Capacity Control Circuit	Flexible with Ferrule 1/2x 0.75 ... 2.5 mm ² Flexible with Insulated Ferrule 1/2x 0.75 ... 1.5 mm ² Rigid 1/2x 0.75 ... 2.5 mm ²
Wire Stripping Length	Auxiliary Circuit 10 mm Control Circuit 10 mm Main Circuit 10 mm
Degree of Protection	acc. to IEC 60529, IEC 60947-1, EN 60529 Auxiliary Terminals IP20 acc. to IEC 60529, IEC 60947-1, EN 60529 Coil Terminals IP20 acc. to IEC 60529, IEC 60947-1, EN 60529 Main Terminals IP20
Terminal Type	Spring Terminals

Dimensions

Product Net Width	45 mm
Product Net Depth / Length	110.7 mm
Product Net Height	68 mm
Product Net Weight	0.26 kg

Popular Downloads

Data Sheet, Technical Information	1SBC100173C0201
Instructions and Manuals	1SBC101020M9701

Ordering

Minimum Order Quantity	32 piece
Customs Tariff Number	85364900

Categories

Low Voltage Products and Systems → Control Products → Contactors → Block Contactors

