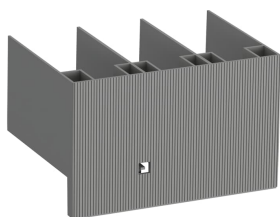


PRODUCT-DETAILS

ATK300

ATK300 Lug kit



General Information

Global Commercial Alias	ATK300
Extended Product Type	ATK300
Product ID	1SFN075417R1001
EAN	0662019702599
Catalog Description	ATK300 Lug kit
Long Description	ATK300 Lug kit

Technical

Suitable For	AF265 AF305 AF370 PSE210 PSE250 PSE300 PSE370 PSTX210 PSTX250 PSTX300 PSTX3770
Suitable for Product Class	Block Contactors Softstarters
Tightening Torque	Cable Lug 375 in.-lb

Environmental

RoHS Status	No declaration needed
-------------	-----------------------

Technical UL/CSA

Tightening Torque UL/CSA	Cable Lug 375 in-lb
-----------------------------	---------------------

Dimensions

Product Net Weight	0.17 kg
--------------------	---------

Ordering

Minimum Order Quantity	1 piece
Customs Tariff Number	85369010
UPC	662019702599

Certificates and Declarations (Document Number)

Declaration of Conformity - CE	NoDecNee
Instructions and Manuals	1SFC100088M0001

Popular Downloads

Instructions and Manuals	1SFC100088M0001
-----------------------------	-----------------

Classifications

EPLAN Catalog Tree	Electrical engineering / Terminals / General	
WEEE Category	Product Not in WEEE Scope	
WEEE B2C / B2B	Business To Business	
CN8	8536 90 10	
UNSPSC	39121432	
Object Classification Code		X

Categories

Low Voltage Products and Systems → Control Products → Contactors → Block Contactors Accessories

