

Product datasheet

Specifications



servo motor BCH - 100mm -
2000W - no oil seal - w key - brake
- straight con

BCH2LH2031CF6C

⚠ Discontinued on: 18 Apr 2024

⚠ To be end-of-service on: 18 Apr 2026

⚠ Discontinued

Main

Range compatibility	Lexium 28
Device short name	BCH2
Product or component type	Servo motor

Complementary

Maximum mechanical speed	5000 rpm
[Us] rated supply voltage	220 V
Network number of phases	Three phase
Continuous stall current	9.87 A
Continuous stall torque	6.37 N.m for LXM28... at 12 A, 220 V, three phase
Continuous power	2000 W
Peak stall torque	19.11 N.m for LXM28... at 12 A, 220 V, three phase
Nominal output power	2000 W for LXM28... at 12 A, 220 V, three phase
Nominal torque	6.37 N.m for LXM28... at 12 A, 220 V, three phase
Nominal speed	3000 rpm for LXM28... at 12 A, 220 V, three phase
Maximum current Irms	32.3 A for LXM28... at 2 kW, 220 V
Maximum permanent current	10.27 A
Product compatibility	LXM28... servo drive motor at 2 kW, 220 V, three phase
Shaft end	Keyed
Shaft diameter	22 mm
Shaft length	45 mm
Key width	8 mm
Feedback type	20 bits single turn absolute encoder
Holding brake	With
Holding torque	6.5 N.m built-in
mounting support	Asian standard flange
Motor flange size	100 mm
Electrical connection	Connector MIL
Torque constant	0.65 N.m/A at 20 °C
Back emf constant	39 V/krpm at 20 °C

Disclaimer: This documentation is not intended as a substitute for and is not to be used for determining suitability or reliability of these products for specific user applications

Rotor inertia	4.35 kg.cm²
Stator resistance	0.36 Ohm at 20 °C
Stator inductance	2.59 mH at 20 °C
Stator electrical time constant	7.19 ms at 20 °C
Maximum radial force Fr	570 N at 3000 rpm
Maximum axial force Fa	200 N
Brake pull-in power	10.4 W
Type of cooling	Natural convection
Length	225.5 mm
Number of motor stacks	2
Centring collar diameter	95 mm
Centring collar depth	7 mm
Number of mounting holes	4
Mounting holes diameter	9.2 mm
Circle diameter of the mounting holes	115 mm
Distance shaft shoulder-flange	7 mm
Net weight	7.2 kg

Environment

IP degree of protection	IP54 IM B5, IM V1 IP50 IM V3
Ambient air temperature for operation	0...40 °C

Packing Units

Unit Type of Package 1	PCE
Number of Units in Package 1	1
Package 1 Height	18.1 cm
Package 1 Width	23.0 cm
Package 1 Length	36.0 cm
Package 1 Weight	9.23 kg

Sustainability



Green Premium™ label is Schneider Electric’s commitment to delivering products with best-in-class environmental performance. Green Premium promises compliance with the latest regulations, transparency on environmental impacts, as well as circular and low-CO₂ products.

Guide to assessing product sustainability is a white paper that clarifies global eco-label standards and how to interpret environmental declarations.

[Learn more about Green Premium >](#)

[Guide to assess a product’s sustainability >](#)



Transparency RoHS/REACH

Well-being performance

✓	Reach Free Of Svhc	
✓	Mercury Free	
✓	Rohs Exemption Information	Yes

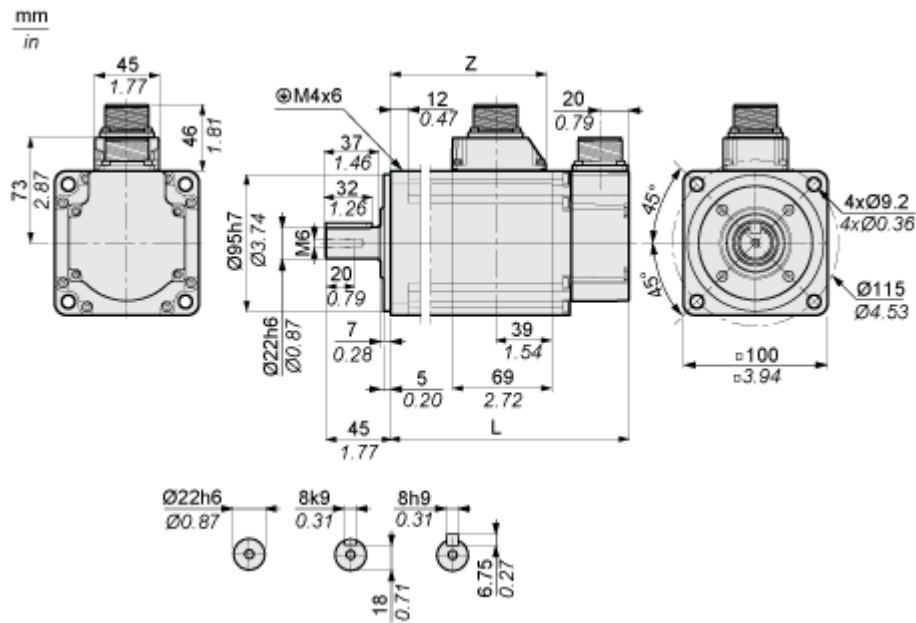
Certifications & Standards

Eu Rohs Directive	Pro-active compliance (Product out of EU RoHS legal scope)
China Rohs Regulation	China RoHS declaration
Environmental Disclosure	Product Environmental Profile
Weee	The product must be disposed on European Union markets following specific waste collection and never end up in rubbish bins
Circularity Profile	End of Life Information

Dimensions Drawings

Dimensions

Dimensions of Motor

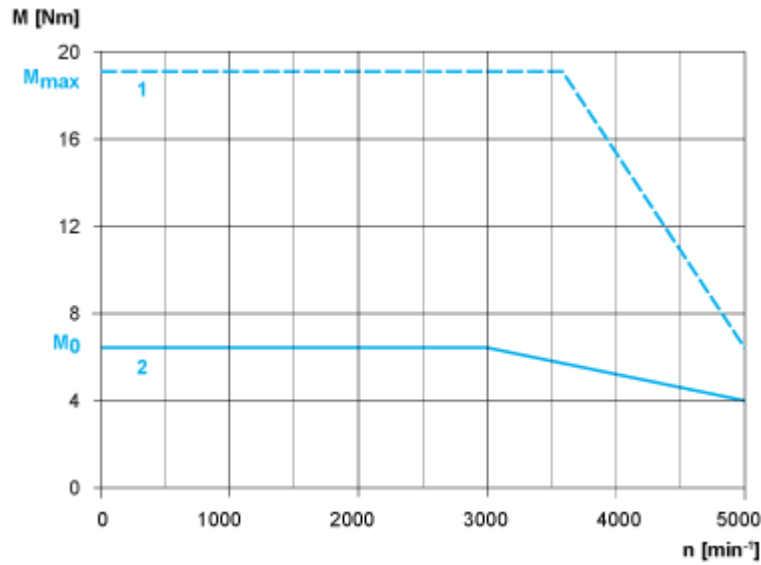


	mm	in.
L (without holding brake)	198.5	7.81
L (with holding brake)	225.5	8.88
Z	141	5.55

Performance Curves

Torque/Speed Curves with 230 V Three Phase Supply Voltage

Servo Motor with LXM28AU20 Servo Drive



- 1 : Peak torque
- 2 : Continuous torque