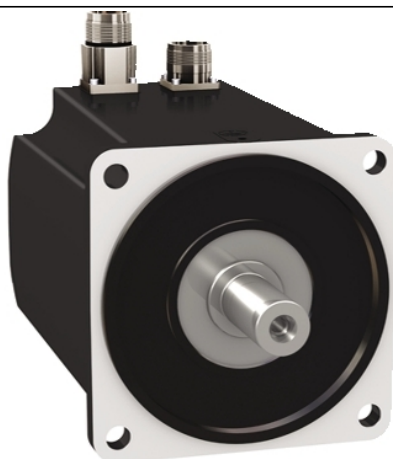


# BMH1402P16F1A

servo motor BMH, Lexium 32, 18.5Nm,  
4000rpm, keyed shaft, with brake, IP54, 16bit  
encoder, straight



## Main

Device short name	BMH
Product or Component Type	Servo motor
Maximum mechanical speed	4000 rpm
Continuous stall torque	163.7 Lbf.in (18.5 N.m) LXM32.D72N4 24 A, 400 V, three phase 163.7 lbf.in (18.5 N.m) LXM32.D72N4 24 A, 480 V, three phase
Peak stall torque	445.2 Lbf.in (50.3 N.m) LXM32.D72N4 24 A, 400 V, three phase 445.2 lbf.in (50.3 N.m) LXM32.D72N4 24 A, 480 V, three phase
Nominal output power	3500 W LXM32.D72N4 24 A, 400 V, three phase 3500 W LXM32.D72N4 24 A, 480 V, three phase
Nominal torque	108.0 Lbf.in (12.2 N.m) LXM32.D72N4 24 A, 400 V, three phase 108.0 lbf.in (12.2 N.m) LXM32.D72N4 24 A, 480 V, three phase
Nominal speed	3000 rpm LXM32.D72N4 24 A, 400 V, three phase 3000 rpm LXM32.D72N4 24 A, 480 V, three phase
Product compatibility	LXM32.D72N4 400...480 V three phase
Shaft end	Keyed
IP Degree of Protection	IP54 standard
Speed feedback resolution	32768 points/turn
Holding brake	With
Mounting Support	International standard flange
Electrical Connection	Straight connectors

## Complementary

Range Compatibility	Lexium 32
[Us] rated supply voltage	480 V
Phase	Three phase
Continuous stall current	16.83 A
Continuous power	4.44 W
Maximum current Irms	57.4 A LXM32.D72N4
Maximum permanent current	57.4 A
Second shaft	Without second shaft end
Shaft diameter	0.9 in (24 mm)
Shaft length	2.0 in (50 mm)
Key width	1.6 in (40 mm)
Feedback type	Single turn SinCos Hiperface
Holding torque	159.3 lbf.in (18 N.m) holding brake
Motor flange size	5.5 in (140 mm)
Number of motor stacks	2
Torque constant	1.1 N.m/A 248 °F (120 °C)
Back emf constant	70.7 V/krpm 248 °F (120 °C)
Number of motor poles	10

Rotor inertia	33.5 kg.cm <sup>2</sup>
Stator resistance	0.23 Ohm 68 °F (20 °C)
Stator inductance	3 mH 68 °F (20 °C)
Stator electrical time constant	13 ms 68 °F (20 °C)
Maximum radial force Fr	2240 N 1000 rpm 1780 N 2000 rpm 1550 N 3000 rpm
Maximum axial force Fa	0.2 x Fr
Brake pull-in power	18 W
Type of cooling	Natural convection
Length	8.9 in (227 mm)
Centring collar diameter	5.1 in (130 mm)
Centring collar depth	0.1 in (3.5 mm)
Number of mounting holes	4
Mounting holes diameter	0.4 in (11 mm)
Circle diameter of the mounting holes	6.5 in (165 mm)
Net Weight	31.5 lb(US) (14.3 kg)





### Ordering and shipping details

Category	US1PC5318282
Discount Schedule	PC53
GTIN	3606485207728
Returnability	No
Country of origin	DE

### Packing Units

Unit Type of Package 1	PCE
Number of Units in Package 1	1
Package 1 Height	10.2 in (26.0 cm)
Package 1 Width	7.9 in (20.0 cm)
Package 1 Length	23.6 in (60.0 cm)
Package 1 Weight	32.2 lb(US) (14.6 kg)

### Offer Sustainability

Sustainable offer status	Green Premium product
California proposition 65	WARNING: This product can expose you to chemicals including: Lead and lead compounds, which is known to the State of California to cause cancer and birth defects or other reproductive harm. For more information go to <a href="http://www.P65Warnings.ca.gov">www.P65Warnings.ca.gov</a>
REACH Regulation	 <a href="#">REACH Declaration</a>
EU RoHS Directive	Pro-active compliance (Product out of EU RoHS legal scope)
Mercury free	Yes
China RoHS Regulation	 <a href="#">China RoHS Declaration</a>
RoHS exemption information	 <a href="#">Yes</a>
Environmental Disclosure	 <a href="#">Product Environmental Profile</a>
Circularity Profile	No need of specific recycling operations
WEEE	The product must be disposed on European Union markets following specific waste collection and never end up in rubbish bins.
PVC free	Yes

### Contractual warranty

Warranty	18 months
----------	-----------