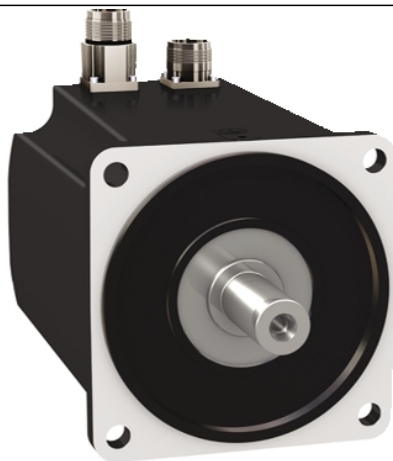


BMH1403P26F1A

servo motor BMH, Lexium 32, 24Nm, 4000rpm, untapped shaft, with brake, IP65, IP67, 16bit encoder, straight



Main

Product or Component Type	Servo motor
Device short name	BMH
Maximum mechanical speed	4000 rpm
Continuous stall torque	212.42 Lbf.in (24 N.m) LXM32.D72N4 24 A, 400 V, three phase 212.42 Lbf.in (24 N.m) LXM32.D72N4 24 A, 480 V, three phase
Peak stall torque	635.48 Lbf.in (71.8 N.m) LXM32.D72N4 24 A, 400 V, three phase 635.48 Lbf.in (71.8 N.m) LXM32.D72N4 24 A, 480 V, three phase
Nominal output power	4700 W LXM32.D72N4 24 A, 400 V, three phase 4700 W LXM32.D72N4 24 A, 480 V, three phase
Nominal torque	123.20 Lbf.in (13.92 N.m) LXM32.D72N4 24 A, 400 V, three phase 123.20 Lbf.in (13.92 N.m) LXM32.D72N4 24 A, 480 V, three phase
Nominal speed	3000 rpm LXM32.D72N4 24 A, 400 V, three phase 3000 rpm LXM32.D72N4 24 A, 480 V, three phase
Product compatibility	LXM32.D72N4 400...480 V three phase
Shaft end	Smooth shaft
IP Degree of Protection	IP65 standard IP67 with IP67 kit
Speed feedback resolution	32768 points/turn
Holding brake	With
Mounting Support	International standard flange
Electrical Connection	Straight connectors

Complementary

Range Compatibility	Lexium 32
[Us] rated supply voltage	480 V
Phase	Three phase
Continuous stall current	18 A
Continuous power	4.8 W
Maximum current Irms	62.3 A LXM32.D72N4
Maximum permanent current	62.3 A
Second shaft	Without second shaft end
Shaft diameter	0.94 in (24 mm)
Shaft length	1.97 in (50 mm)
Feedback type	Single turn SinCos Hiperface
Holding torque	203.57 lbf.in (23 N.m) holding brake
Motor flange size	5.51 in (140 mm)
Number of motor stacks	3
Torque constant	1.34 N.m/A 248 °F (120 °C)
Back emf constant	85.9 V/krpm 248 °F (120 °C)
Number of motor poles	10
Rotor inertia	50.27 kg.cm²

Stator resistance	0.22 Ohm 68 °F (20 °C)
Stator inductance	3 mH 68 °F (20 °C)
Stator electrical time constant	13.6 ms 68 °F (20 °C)
Maximum radial force Fr	2420 N 1000 rpm 1920 N 2000 rpm 1680 N 3000 rpm
Maximum axial force Fa	0.2 x Fr
Brake pull-in power	19 W
Type of cooling	Natural convection
Length	10.51 in (267 mm)
Centring collar diameter	5.12 in (130 mm)
Centring collar depth	0.14 in (3.5 mm)
Number of mounting holes	4
Mounting holes diameter	0.43 in (11 mm)
Circle diameter of the mounting holes	6.50 in (165 mm)
Net Weight	40.79 lb(US) (18.5 kg)





Ordering and shipping details

Category	18282-LEXIUM 32 MOTORS
Discount Schedule	PC53
GTIN	3606485208206
Returnability	No
Country of origin	DE

Packing Units

Unit Type of Package 1	PCE
Number of Units in Package 1	1
Package 1 Height	10.24 in (26.0 cm)
Package 1 Width	7.87 in (20.0 cm)
Package 1 Length	23.62 in (60.0 cm)
Package 1 Weight	41.51 lb(US) (18.83 kg)

Offer Sustainability

Sustainable offer status	Green Premium product
California proposition 65	WARNING: This product can expose you to chemicals including: Lead and lead compounds, which is known to the State of California to cause cancer and birth defects or other reproductive harm. For more information go to www.P65Warnings.ca.gov
REACH Regulation	 REACH Declaration
EU RoHS Directive	Pro-active compliance (Product out of EU RoHS legal scope)
Mercury free	Yes
China RoHS Regulation	 China RoHS Declaration
RoHS exemption information	 Yes
Environmental Disclosure	 Product Environmental Profile
Circularity Profile	No need of specific recycling operations
WEEE	The product must be disposed on European Union markets following specific waste collection and never end up in rubbish bins.
PVC free	Yes

Contractual warranty

Warranty	18 months
----------	-----------