

Product data sheet

Specifications



synchronous motor - BMP - 480 VAC - 0.37 kW - IP65 - IEC

BMP0701F3NA2A

Product availability: Non-Stock - Not normally stocked in distribution facility

Price*: 621.51 USD

Main

Product or Component Type	Synchronous motor
Device short name	BMP
Maximum mechanical speed	3600 rpm
Nominal output power	370 W ATV32 0.37 kW 400 V three phase 370 W ATV320 0.37 kW 400 V three phase
Nominal torque	10.44 lbf.in (1.18 N.m) ATV32 0.37 kW 400 V three phase 10.44 lbf.in (1.18 N.m) ATV320 0.37 kW 400 V three phase
Nominal speed	3000 rpm ATV32 0.37 kW 400 V three phase 3000 rpm ATV320 0.37 kW 400 V three phase
Product compatibility	Variable speed drive ATV32 0.37 kW 400 V three phase Variable speed drive ATV320 0.37 kW 380...500 V three phase
Shaft end	Keyed
IP Degree of Protection	IP65 standard IP67 with IP67 kit
Holding brake	Without
Mounting Support	International standard flange
Electrical Connection	Rotatable right-angled connector

Complementary

Range Compatibility	Altivar Machine ATV320 Altivar 32
[Us] rated supply voltage	480 V
Phase	Three phase
Maximum current Irms	2.3 A ATV32 0.37 kW 400 V three phase 2.3 A ATV320 0.37 kW 400 V three phase
Nominal operating frequency	250 Hz ATV32 0.37 kW 400 V three phase 250 Hz ATV320 0.37 kW 400 V three phase
Minimum operating frequency	60 Hz ATV32 0.37 kW 400 V three phase 60 Hz ATV320 0.37 kW 400 V three phase
Maximum operating frequency	300 Hz ATV32 0.37 kW 400 V three phase 300 Hz ATV320 0.37 kW 400 V three phase
Shaft diameter	0.4 in (11 mm)
Shaft length	0.9 in (23 mm)
Key width	0.2 in (4 mm)
Motor flange size	2.8 in (70 mm)
Torque constant	1.48 N.m/A 104 °F (40 °C)

Price is "List Price" and may be subject to a trade discount – check with your local distributor or retailer for actual price.

Disclaimer: This documentation is not intended as a substitute for and is not to be used for determining suitability or reliability of these products for specific user applications

Number of motor poles	5
Number of motor stacks	1
Rotor inertia	0.59 kg.cm²
Stator resistance	17.75 Ohm 104 °F (40 °C)
Stator inductance	40.03 mH for q-axis winding 104 °F (40 °C) 40.03 mH for d-axis winding 104 °F (40 °C)
Maximum radial force Fr	660 N 1000 rpm 520 N 2000 rpm 460 N 3000 rpm 410 N 4000 rpm
Maximum axial force Fa	0.2 x Fr
Type of cooling	Natural convection
Length	4.8 in (122 mm)
Centring collar diameter	2.4 in (60 mm)
Centring collar depth	0.10 in (2.5 mm)
Number of mounting holes	4
Mounting holes diameter	0.2 in (5.5 mm)
Circle diameter of the mounting holes	3.0...3.2 in (75...82 mm)
Net Weight	3.5 lb(US) (1.6 kg)

Ordering and shipping details

Category	US1PC5318282
Discount Schedule	PC53
GTIN	3606480564383
Returnability	Yes
Country of origin	US

Packing Units

Unit Type of Package 1	PCE
Number of Units in Package 1	1
Package 1 Height	4.5 in (11.5 cm)
Package 1 Width	7.5 in (19.0 cm)
Package 1 Length	15.7 in (40.0 cm)
Package 1 Weight	4.594 lb(US) (2.084 kg)
Unit Type of Package 2	P06
Number of Units in Package 2	6
Package 2 Height	30.3 in (77.0 cm)
Package 2 Width	31.5 in (80.0 cm)
Package 2 Length	23.6 in (60.0 cm)
Package 2 Weight	46.31 lb(US) (21.004 kg)

Contractual warranty

Warranty	18 months
----------	-----------

Sustainability




Green Premium™ label is Schneider Electric's commitment to delivering products with best-in-class environmental performance. Green Premium promises compliance with the latest regulations, transparency on environmental impacts, as well as circular and low-CO₂ products.

Guide to assessing product sustainability is a white paper that clarifies global eco-label standards and how to interpret environmental declarations.

[Learn more about Green Premium >](#)

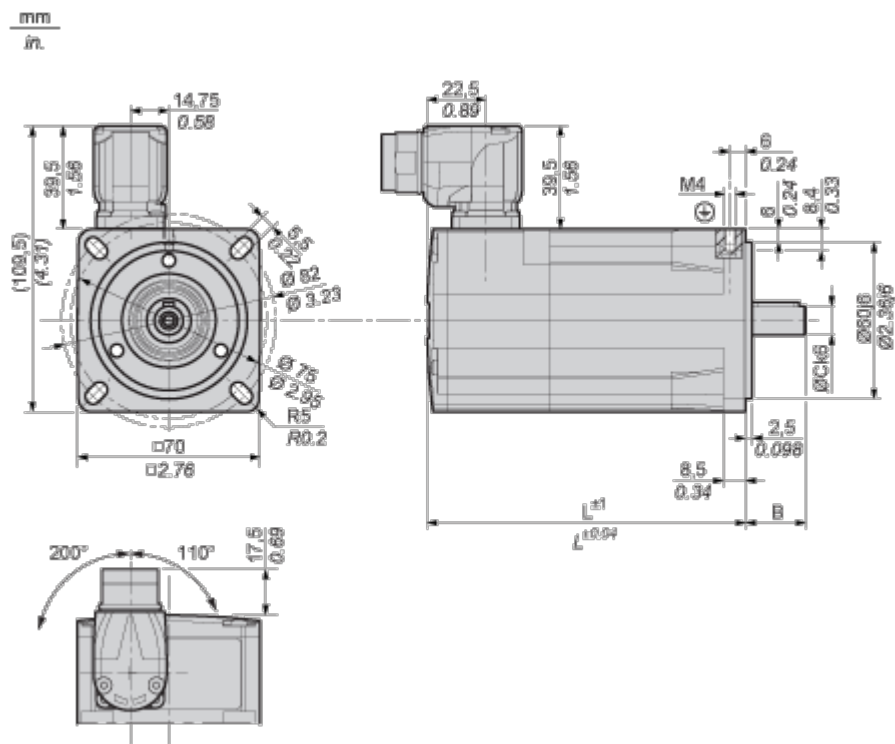
[Guide to assess a product's sustainability >](#)

Well-being performance

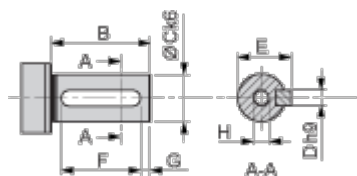
 Mercury Free	
 Rohs Exemption Information	Yes
 Pvc Free	
Reach Regulation	REACH Declaration
Eu Rohs Directive	Pro-active compliance (Product out of EU RoHS legal scope)
China Rohs Regulation	China RoHS declaration
Weee	The product must be disposed on European Union markets following specific waste collection and never end up in rubbish bins.
California Proposition 65	WARNING: This product can expose you to chemicals including: Lead and lead compounds, which is known to the State of California to cause cancer and birth defects or other reproductive harm. For more information go to www.P65Warnings.ca.gov

Dimensions Drawings

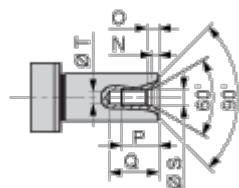
Dimensions



Parallel Key According to DIN 6885 A



Female Thread of Shaft According to DIN 332-D

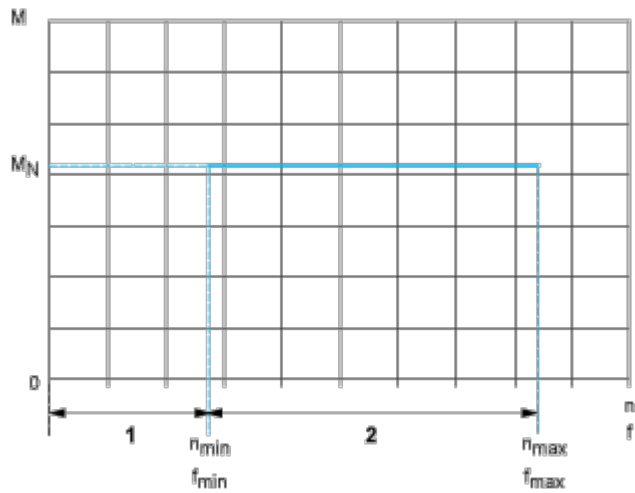


L	mm	122
	in.	4.80
B	mm	23
	in.	0.90
C	mm	11

	in.	0.43
D	mm	4
	in.	0.16
E	mm	12.5
	in.	0.49
F	mm	18
	in.	0.71
G	mm	2.5
	in.	0.10
H		M4
N	mm	2.1
	in.	0.08
O	mm	3.2
	in.	0.12
P	mm	10
	in.	0.39
Q	mm	14
	in.	0.55
S	mm	4.3
	in.	0.17
T	mm	3.3
	in.	0.13

Performance Curves

Performance curves



- M : Torque in Nm
- n : Speed in rpm
- f : frequency in Hz
- 1 : Only permissible during acceleration and deceleration phases.
- 2 : Continuous operation with the default values from the configuration file.