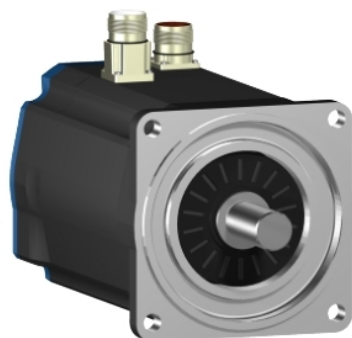


# BSH1402T31A1P

AC servo motor BSH, Lexium 32, 14.4N.m,  
3000rpm, keyed shaft, without brake, IP65



## Main

Device short name	BSH
Product or Component Type	Servo motor
Maximum mechanical speed	4000 rpm
Continuous stall torque	172.6 Lbf.In (19.5 N.m) LXM32.D72N4 24 A, 400 V, three phase 172.6 Lbf.In (19.5 N.m) LXM32.D72N4 24 A, 480 V, three phase 127.5 Lbf.In (14.4 N.m) LXM05AD42M3X, 200...240 V, three phase 127.5 Lbf.In (14.4 N.m) LXM05BD42M3X, 200...240 V, three phase 127.5 lbf.in (14.4 N.m) LXM05CD42M3X, 200...240 V, three phase
Peak stall torque	524.8 Lbf.In (59.3 N.m) LXM32.D72N4 24 A, 400 V, three phase 524.8 Lbf.In (59.3 N.m) LXM32.D72N4 24 A, 480 V, three phase 217.37 Lbf.In (24.56 N.m) LXM05AD42M3X, 200...240 V, three phase 217.37 lbf.in (24.56 N.m) LXM05BD42M3X, 200...240 V, three phase
Nominal output power	3900 W LXM32.D72N4 24 A, 400 V, three phase 3900 W LXM32.D72N4 24 A, 480 V, three phase 2900 W LXM05AD42M3X, 200...240 V, three phase 2900 W LXM05BD42M3X, 200...240 V, three phase 2900 W LXM05CD42M3X, 200...240 V, three phase
Nominal torque	108.9 Lbf.In (12.3 N.m) LXM32.D72N4 24 A, 400 V, three phase 108.9 Lbf.In (12.3 N.m) LXM32.D72N4 24 A, 480 V, three phase 81.4 Lbf.In (9.2 N.m) LXM05AD42M3X, 200...240 V, three phase 81.4 Lbf.In (9.2 N.m) LXM05BD42M3X, 200...240 V, three phase 81.4 lbf.in (9.2 N.m) LXM05CD42M3X, 200...240 V, three phase
Nominal speed	3000 rpm LXM32.D72N4 24 A, 400 V, three phase 3000 rpm LXM32.D72N4 24 A, 480 V, three phase 3000 rpm LXM05AD42M3X, 200...240 V, three phase 3000 rpm LXM05BD42M3X, 200...240 V, three phase 3000 rpm LXM05CD42M3X, 200...240 V, three phase
Product compatibility	LXM05AD42M3X 200...240 V three phase LXM05BD42M3X 200...240 V three phase LXM05CD42M3X 200...240 V three phase
Shaft end	Keyed
IP Degree of Protection	IP65 standard IP67 with IP67 kit
Speed feedback resolution	131072 points/turn
Holding brake	Without
Mounting Support	International standard flange
Electrical Connection	Straight connectors

The information provided in this documentation contains general descriptions and/or technical characteristics of the performance of the products contained herein. This documentation is not intended as a substitute for and is not to be used for determining suitability or reliability of these products for specific user applications. It is the duty of any such user or integrator to perform the appropriate and complete risk analysis, evaluation and testing of the products with respect to the relevant specific application or use thereof. Neither Schneider Electric Industries SAS nor any of its affiliates or subsidiaries shall be responsible or liable for misuse of the information contained herein.

## Complementary

Range Compatibility	Lexium 05 Lexium 32
Supply voltage max	480 V
Phase	Three phase
Continuous stall current	22.5 A
Maximum continuous power	4.2 W
Maximum current Irms	72 A LXM32.D72N4 75.2 A LXM05AD42M3X 75.2 A LXM05BD42M3X 75.2 A LXM05CD42M3X
Maximum permanent current	75.2 A
Switching frequency	8 kHz
Second shaft	Without second shaft end
Shaft diameter	0.9 in (24 mm)
Shaft length	2.0 in (50 mm)
Key width	1.6 in (40 mm)
Feedback type	Single turn SinCos Hiperface
Motor flange size	5.5 in (140 mm)
Number of motor stacks	2
Torque constant	1.47 N.m/A 248.0000000000 °F (120 °C)
Back emf constant	101 V/krpm 248.0000000000 °F (120 °C)
Number of motor poles	10
Rotor inertia	12.68 kg.cm <sup>2</sup>
Stator resistance	0.6 Ohm 68.0000000000 °F (20 °C)
Stator inductance	7.4 mH 68.0000000000 °F (20 °C)
Stator electrical time constant	12.1 ms 68.0000000000 °F (20 °C)
Maximum radial force Fr	1680 N 3000 rpm 1930 N 2000 rpm 2430 N 1000 rpm
Maximum axial force Fa	0.2 x Fr
Type of cooling	Natural convection
Length	10.7 in (272.5 mm)
Centring collar diameter	5.1 in (130 mm)
Centring collar depth	0.1 in (3.5 mm)
Number of mounting holes	4
Mounting holes diameter	0.4 in (11 mm)
Circle diameter of the mounting holes	6.5 in (165 mm)
Product Weight	36.6 lb(US) (16.6 kg)

## Ordering and shipping details

Category	US1PC5318282
Discount Schedule	PC53
GTIN	3389118361317
Returnability	No
Country of origin	DE

## Packing Units

Unit Type of Package 1	PCE
Number of Units in Package 1	1
Package 1 Height	10.6 in (27.0 cm)
Package 1 Width	10.6 in (27.0 cm)
Package 1 Length	19.0 in (48.2 cm)
Package 1 Weight	25.4 lb(US) (11.5 kg)

## Offer Sustainability

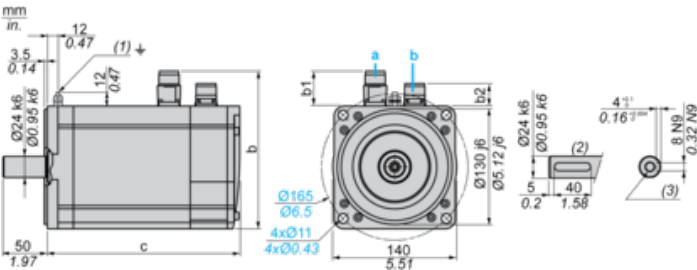
Sustainable offer status	Green Premium product
California proposition 65	WARNING: This product can expose you to chemicals including: Lead and lead compounds, which is known to the State of California to cause cancer and birth defects or other reproductive harm. For more information go to <a href="http://www.P65Warnings.ca.gov">www.P65Warnings.ca.gov</a>
EU RoHS Directive	Pro-active compliance (Product out of EU RoHS legal scope)
Mercury free	Yes
China RoHS Regulation	<a href="#">China RoHS Declaration</a>
RoHS exemption information	<a href="#">Yes</a>
Environmental Disclosure	<a href="#">Product Environmental Profile</a>
Circularity Profile	No need of specific recycling operations
WEEE	The product must be disposed on European Union markets following specific waste collection and never end up in rubbish bins.
PVC free	Yes

## Contractual warranty

Warranty	18 months
----------	-----------

Servo Motors Dimensions

Example with Straight Connectors



- a: Power supply for servo motor brake  
b: Power supply for servo motor encoder  
(1) M4 screw  
(2) Shaft end, keyed slot (optional)  
(3) For screws M8 x 19 mm/M8 x 0.75 in.

Dimensions in mm

Straight connectors			Rotatable angled connectors			c (without brake)	c (with brake)
b	b1	b2	b	b1	b2		
192.5	54	25.5	198.5	60	39.5	273	311

Dimensions in in.

Straight connectors			Rotatable angled connectors			c (without brake)	c (with brake)
b	b1	b2	b	b1	b2		
7.57	2.12	1.00	7.81	2.36	1.55	10.74	12.24

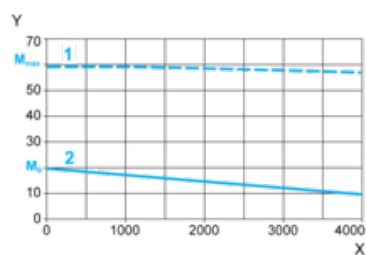
---

### 400 V 3-Phase Supply Voltage

---

#### Torque/Speed Curves

Servo motor with LXM32•D72N4 servo drive



X Speed in rpm

Y Torque in Nm

1 Peak torque

2 Continuous torque

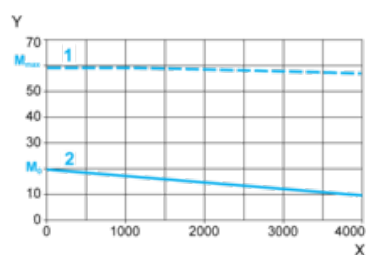
---

### 480 V 3-Phase Supply Voltage

---

#### Torque/Speed Curves

Servo motor with LXM32•D72N4 servo drive



X Speed in rpm

Y Torque in Nm

1 Peak torque

2 Continuous torque