



# D-M9 Auto Switch Series

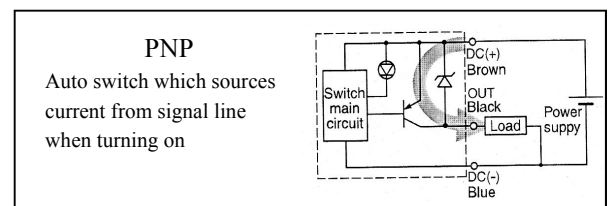
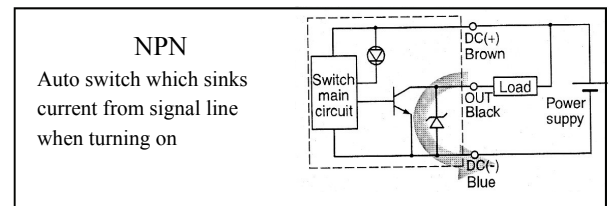
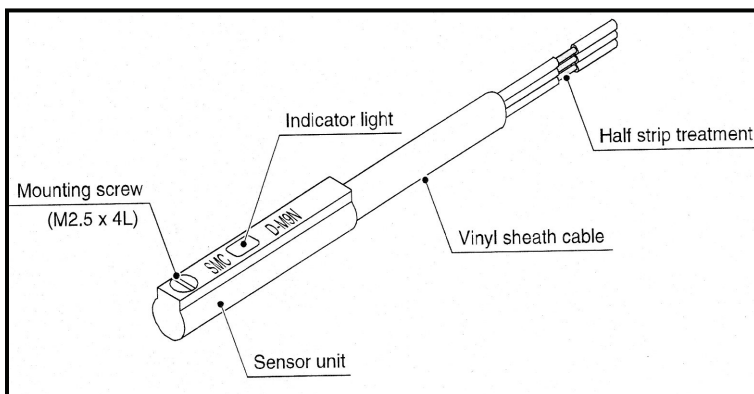
The D-M9 series switch is a universal mount, solid state sensor. With the correct mount, this switch can be used with a number of different SMC cylinders.



Replaces Conventional type D-F9 Series

Part Number	Output type	Wire Length	
D-M9BL	2 Wire	3000mm (Half Strip)	Red LED when ON
D-M9NL	3 Wire, NPN	3000mm (Half Strip)	Red LED when ON
D-M9P	3 Wire, PNP	500mm (Half Strip)	Red LED when ON
D-M9PL	3 Wire, PNP	3000mm (Half Strip)	Red LED when ON
D-M9PSAPC	M8, 3 Pin Pre-wired, PNP	500mm	Red LED when ON
D-M9NSAPC	M8, 3 Pin Pre-wired, NPN	500mm	Red LED when ON
D-M9PSDPC	M12, 4 Pin Pre-wire, PNP	500mm	Red LED when ON
D-M9NSDPC	M12, 4 Pin Pre-wire, NPN	500mm	Red LED when ON

D-M9NW	3 Wire, NPN	500mm (Half Strip)	Red LED when ON Green LED Optimum Operating Position
D-M9PW	3 Wire, PNP	500mm (Half Strip)	Red LED when ON Green LED Optimum Operating Position





# D-M9 Auto Switch Series

The D-M9 series switch is a universal mount, solid state sensor. With the correct mount, this switch can be used with a number of different SMC cylinders.

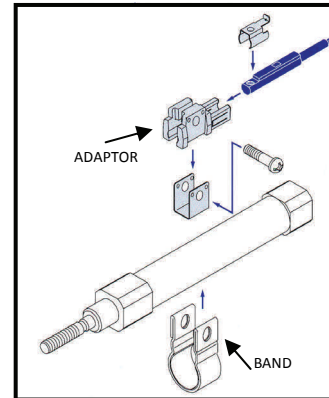


## Band Mounting

Series	Bore	Adaptor	Band
NCDJ2	6mm	BJ3-1	BJ2-006
	10mm	BJ3-1	BJ2-010
	16mm	BJ3-1	BJ2-016
CDM2	20mm	BJ3-1	BM2-020
	25mm	BJ3-1	BM2-025
	32mm	BJ3-1	BM2-032
	40mm	BJ3-1	BM2-040
CD85	10mm	BJ3-1	BJ2-010
	16mm	BJ3-1	BJ2-016
	20mm	BJ3-1	BM2-020
	25mm	BJ3-1	BM2-025

Series	Bore	Adaptor	Band
NCDM	.44"	BJ3-1	BJ2-012
	.56"	BJ3-1	BJ2-015
	.75"	BJ3-1	NBM2-075
	.88"	BJ3-1	NBM2-088
	1.06"	BJ3-1	NBM2-106
	1.25"	BJ3-1	NBM2-125
	1.50"	BJ3-1	NBM2-150
	2.00"	BJ3-1	NCMB-200
NCDG	20mm	BJ3-1	BMA2-020
	25mm	BJ3-1	BMA2-025
	32mm	BJ3-1	BMA2-032
	40mm	BJ3-1	BMA2-040
	50mm	BJ3-1	BMA2-050
	63mm	BJ3-1	BMA2-063

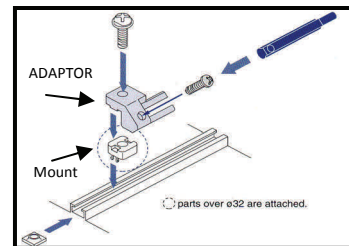
## Band Mounting



## Rail Mounting

Series	Bore	Adaptor	Mount Bracket
NCDQ2	12-25mm	BQ2-012	BQ-1
	32-50mm	BQ2-012	BQ-2

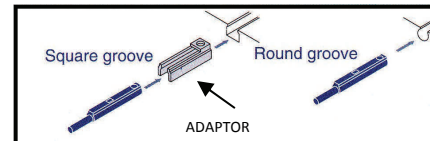
## Rail Mounting



## Groove Mounting

Series	Bore	Adaptor	Mount Bracket
MGP/MGQ	12-100mm	BMG2-012	-

## Groove Mounting



## Tie Rod Mounting

Series	Bore	Adaptor	Mount Bracket
CDA2	40, 50mm	-	BA7-040
CDNA	63mm	-	BA7-063
			BA7-080
CDLA	80, 100mm	-	BA7-080
			BA7-080

Series	Bore	Adaptor	Mount Bracket
MDB	32, 40mm	-	BMB5-032
C95SD	50, 63mm	-	BA7-040
			BA7-063
NCDA1	1.50"	-	BMB5-032
			BA7-040
			BA7-063

## Tie Rod Mounting

