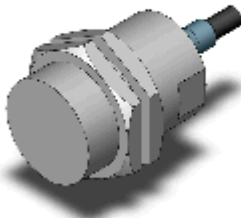


Proximity Sensor Ideal for High Temperatures and Cleaning Processes

E2EH-X12D1-T 2M

Proximity Sensor Ideal for High Temperatures and Cleaning Processes,
Sensing distance 12 mm, DC 2-wire models, NO, Pre-wired models, No
polarity, 2 m



Image

Sensing head size	M30
Type	Cylinder type (with screw), Shielded
Power source	DC 2-wire models
Sensing distance	12 mm ±10%
Setting distance	0 to 9.6 mm
Operation mode	NO

Ratings/Performance

As of September 10, 2023

Sensing head size	M30
Type	Cylinder type (with screw), Shielded
Power source	DC 2-wire models
Sensing distance	12 mm ±10%
Setting distance	0 to 9.6 mm
Differential distance	15% max. of sensing distance
Sensing object	Ferrous metal (Sensitivity lowers with non-ferrous metals.)
Standard sensing object	Iron 36 x 36 x 1 mm
Response frequency	100 Hz (Average value)
Power supply voltage	12 to 24 VDC ripple (p-p) 10% max.
Operating voltage range	10 to 32 VDC
Leakage current	0.8 mA max.
Control output (Switching capacity)	3 to 100 mA
Control output (Residual voltage)	5 V max.(Load current 100 mA with cable length of 2 m)
Indicator	Operation indicator (red), Operation setting indicator (yellow)
Operation mode	NO
Polarity	No polarity
Protective circuit	Output short-cut protection Surge suppressor
Ambient temperature (Operating)	0 to 100 °C
Ambient temperature (Storage)	-25 to 70 °C
Ambient humidity (Operating)	35 to 95 %
Ambient humidity (Storage)	35 to 95 %
Temperature influence	±10% max. of sensing distance at 23 °C in the temperature range of 0 to 70 °C

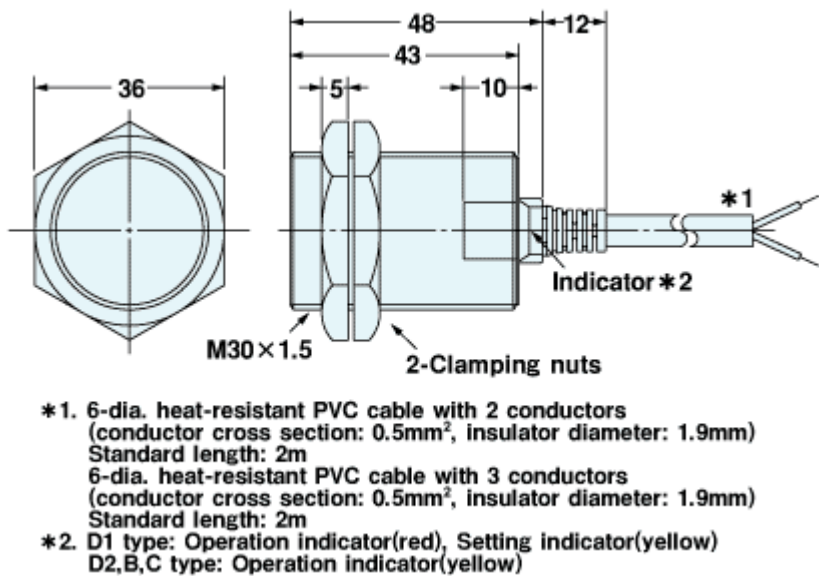
	±15% max. of sensing distance at 23 °C in the temperature range of +70 to +100 °C
Voltage influence	±10% max. of sensing distance at rated voltage in the rated voltage ±15% range
Insulation resistance	Between charged parts and the case: 50 MΩ min. at 500 VDC
Dielectric strength	Between charged parts and the case: 1,000 VAC 50/60 Hz 1 min
Vibration resistance	Destruction: 10 to 55 Hz, 1.5 mm double amplitude each in X, Y, and Z directions for 2 h
Shock resistance	Destruction: 1000 m/s ² 10 times each in X, Y, and Z directions
Degree of protection	IEC: IP67 DIN40050-9 IP69K
Connection method	Pre-wired models (2 m)
Weight	Package: Approx. 220 g
Material	Case: Stainless steel (SUS316L) Sensing surface: Polybutylene terephthalate (PBT) Clamping nuts: Stainless steel (SUS316L) Cable: Heat-resistant PVC cable
Accessories	Instruction manual

As of September 10, 2023

Dimensions

As of September 10, 2023

Dimensions



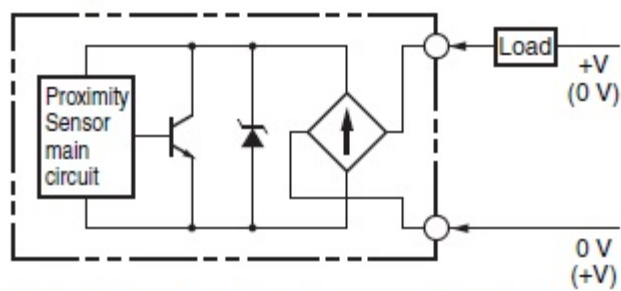
As of September 10, 2023

Output circuit

As of September 10, 2023

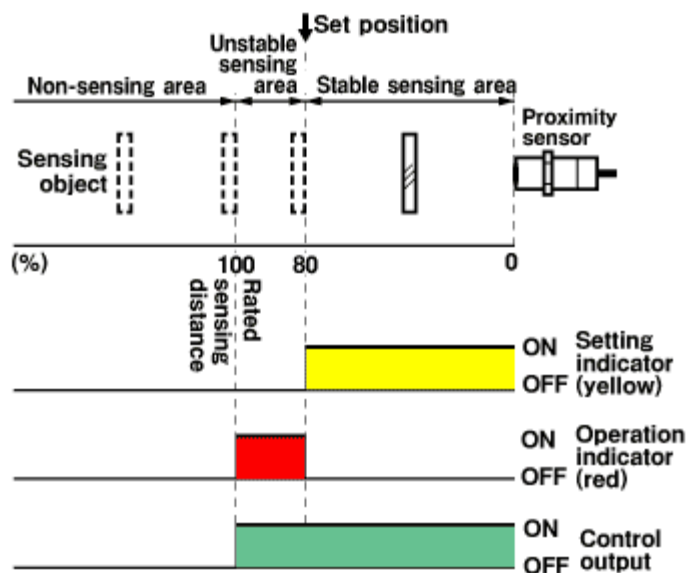
Output circuit

Polarity: None



- Note: 1. The load can be connected to either the +V or 0 V side.
2. The E2EH-X□D□-T has no polarity. Therefore, you do not need to consider the polarity.

Timing chart

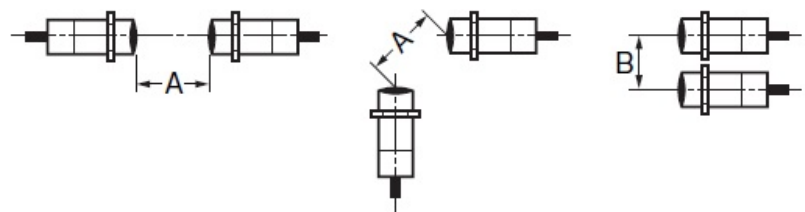


As of September 10, 2023

Mutual interference

As of September 10, 2023

Mutual interference



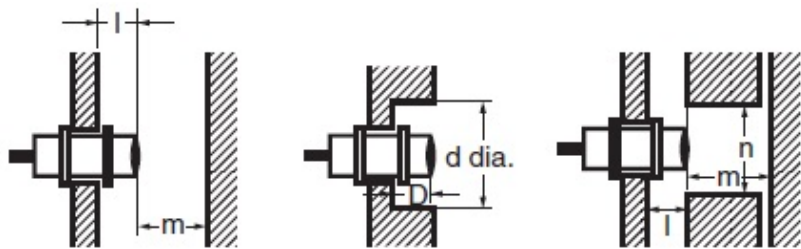
A: 110 mm min., B: 90 mm min.

As of September 10, 2023

Effects of surrounding metals

As of September 10, 2023

Effects of surrounding metals



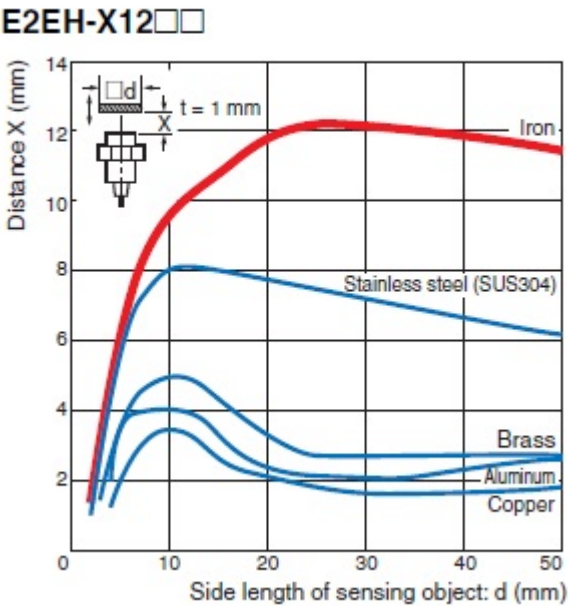
l: 6 mm min., dia. d: 50 mm min., D: 6 mm min., m: 45 mm min., n: 50 mm min.

As of September 10, 2023

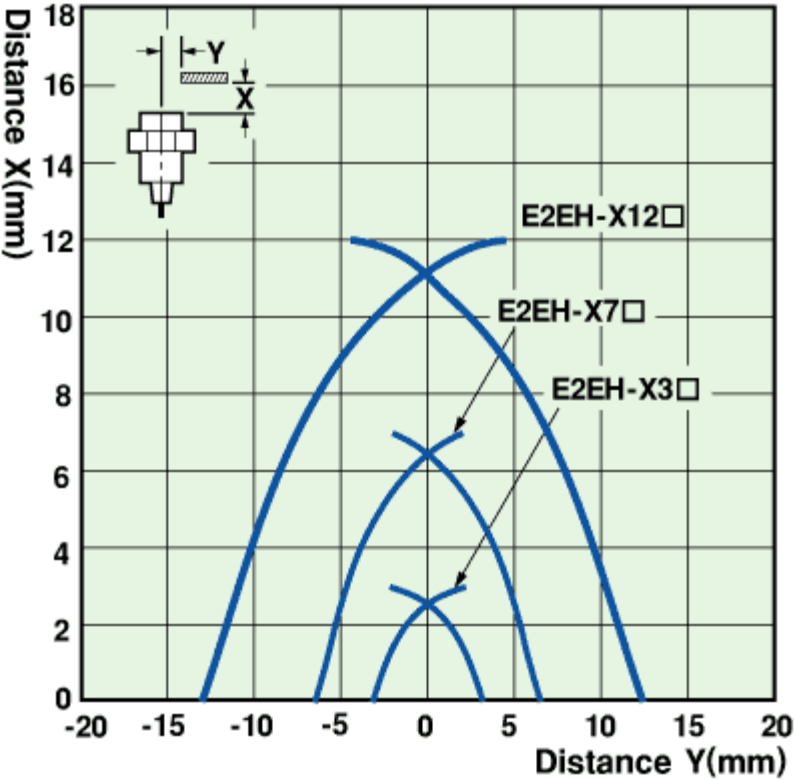
Characteristic chart

As of September 10, 2023

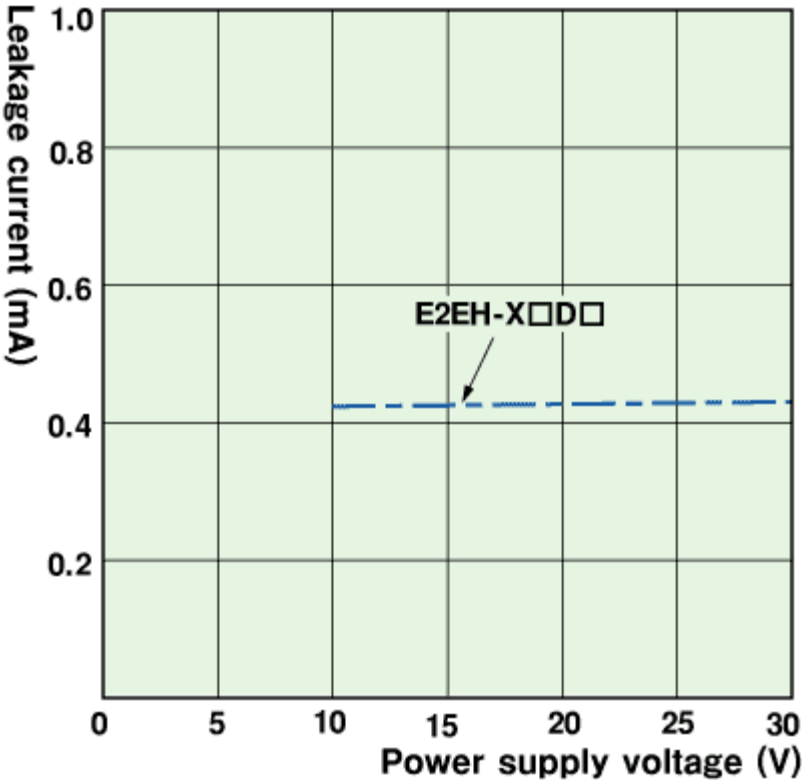
Sensing distance vs. size and material of sensing object



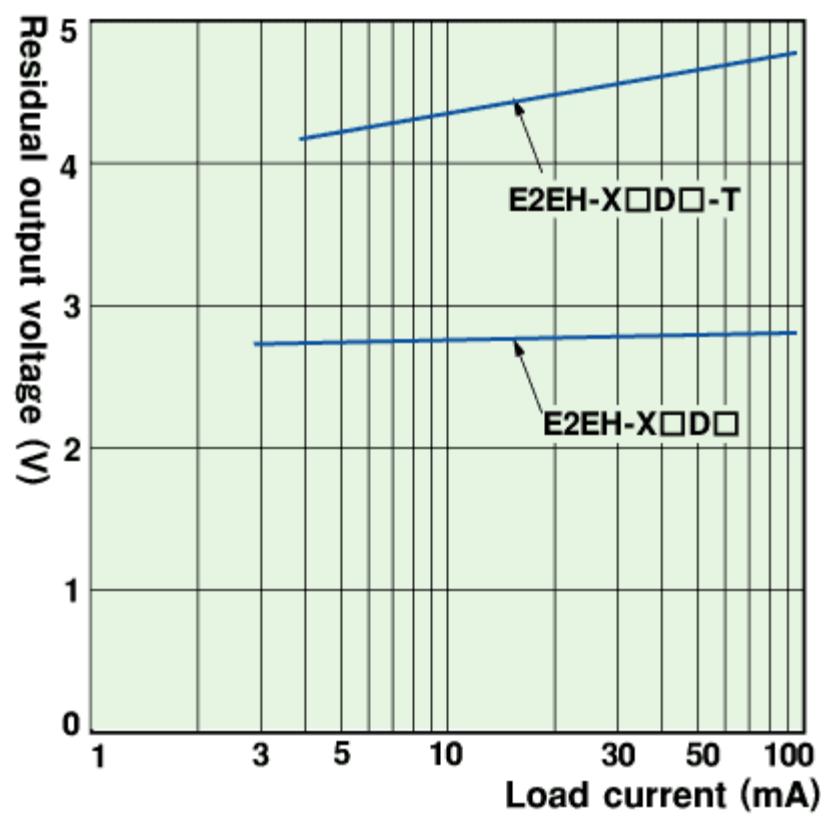
Sensing range



Leakage current



Residual voltage



As of September 10, 2023