

Proximity Sensor with All-stainless Housing

E2FM-X10D1-M1TGJ-T 0.3M



Image

Shielded, Cylinder type (with screw) M30, DC 2-wire models, Sensing distance 10 mm \pm 10%, NO, No polarity, Prewired M12 smart click connector model

Sensing head size	M30
Type	Cylinder type (with screw), Shielded
Power source	DC 2-wire models
Sensing distance	10 mm \pm 10%
Setting distance	0 to 7 mm
Operation mode	NO

Ratings/Performance

As of July 16, 2020

Sensing head size	M30
Type	Cylinder type (with screw), Shielded
Power source	DC 2-wire models
Sensing distance	10 mm \pm 10%
Setting distance	0 to 7 mm
Differential distance	15% max. of sensing distance
Sensing object	Ferrous metal (Sensitivity lowers with non-ferrous metals.)
Standard sensing object	Iron 54 x 54 x 1 mm
Response frequency	50 Hz (Average value)
Power supply voltage	12 to 24 VDC ripple (p-p) 10% max.
Operating voltage range	10 to 30 VDC
Leakage current	0.8 mA max.
Control output (Switching capacity)	3 to 100 mA
Control output (Residual voltage)	3 V max. (Load current 100 mA max. with cable length of 2 m)
Indicator	Operation indicator (red), Operation setting indicator (green)
Operation mode	NO
Polarity	No polarity
Protective circuit	Output short-cut protection Surge suppressor
Ambient temperature (Operating)	-25 to 70 °C
Ambient temperature (Storage)	-25 to 70 °C
Ambient humidity (Operating)	35 to 95% RH
Ambient humidity (Storage)	35 to 95% RH
Temperature influence	\pm 20% max. of sensing distance at 23 °C in the temperature range of -25 to 70 °C

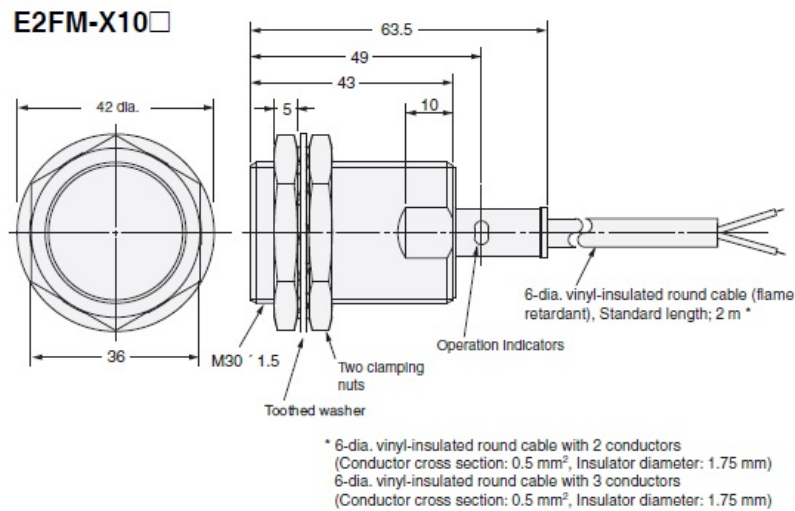
Voltage influence	±1% max. of sensing distance at rated voltage in the rated voltage ±15% range
Insulation resistance	Between charged parts and the case: 5 MΩ min. at 500 VDC
Dielectric strength	Between charged parts and the case: 1,000 VAC 50/60 Hz 1 min
Vibration resistance	Destruction: 10 to 55 Hz, 1.5 mm double amplitude each in X, Y, and Z directions for 2 h
Shock resistance	Destruction: 1000 m/s ² 10 times each in X, Y, and Z directions
Degree of protection	IEC: IP67
Connection method	Prewired M12 smart click connector model (0.3 m)
Weight	Package: Approx. 190 g
Material	Case: Stainless steel (SUS303) Sensing surface: Stainless steel (SUS303) Clamping nuts: Stainless steel Toothed washers: Iron zinc plating
Accessories	Instruction manual

As of July 16, 2020

Dimensions

As of July 16, 2020

Dimensions

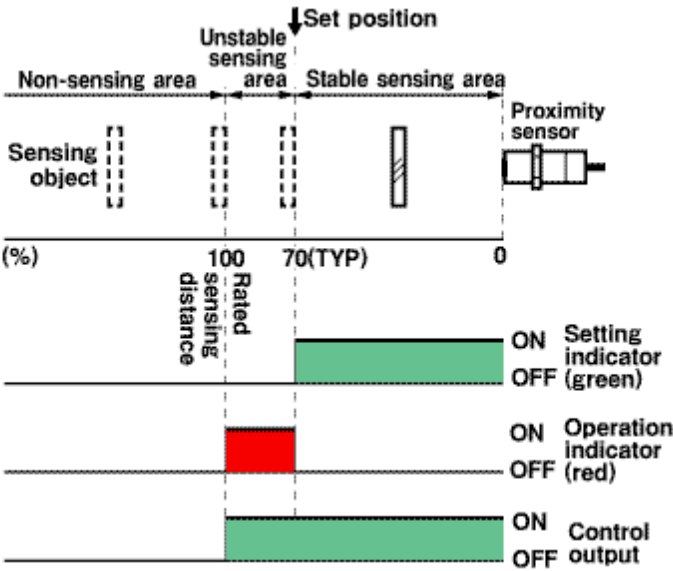


As of July 16, 2020

Output circuit

As of July 16, 2020

Timing chart

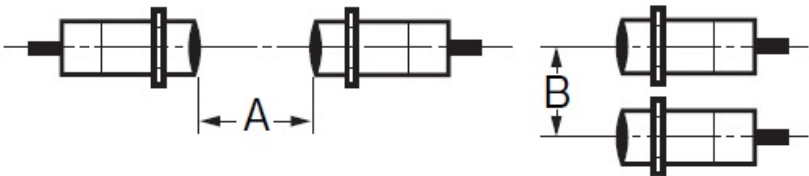


As of July 16, 2020

Mutual interference

As of July 16, 2020

Mutual interference



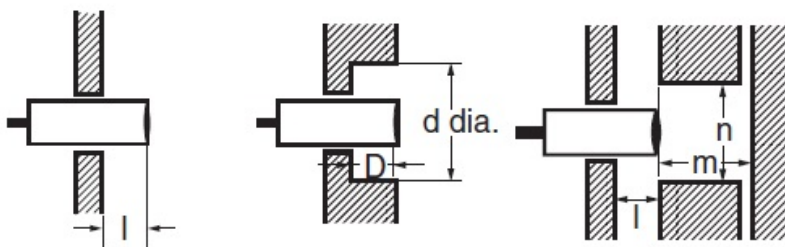
A: 110 mm min., B: 100 mm min.

As of July 16, 2020

Effects of surrounding metals

As of July 16, 2020

Effects of surrounding metals



Iron

l: 0 mm min., dia. d: 30 mm min., D: 0 mm min., m: 40 mm min., n: 100 mm min.

Aluminum

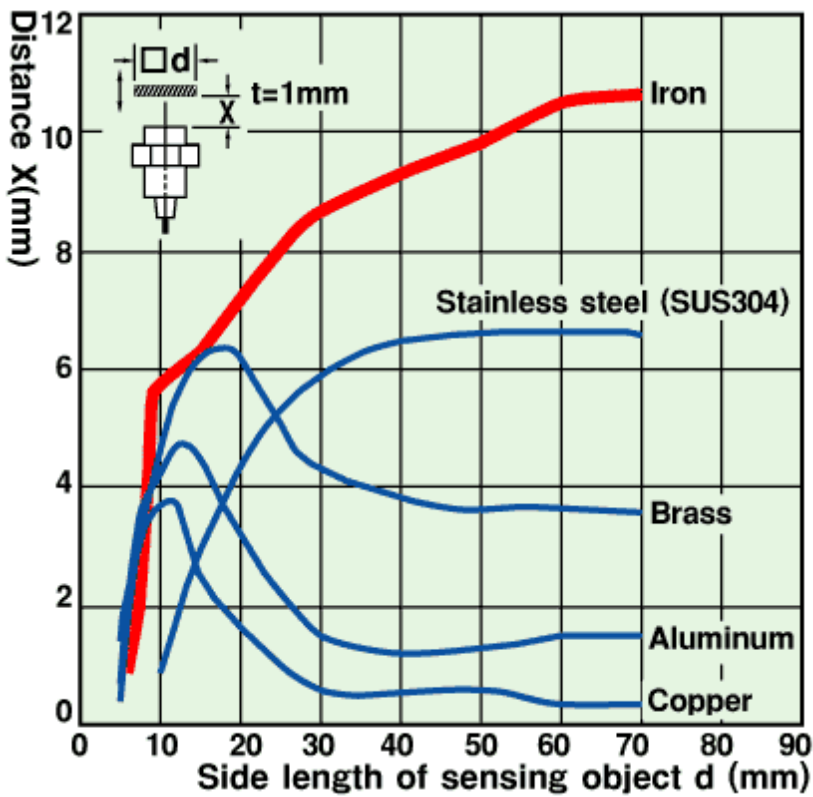
l: 24 mm min., dia. d: 120 mm min., D: 24 mm min., m: 40 mm min., n: 120 mm min.

As of July 16, 2020

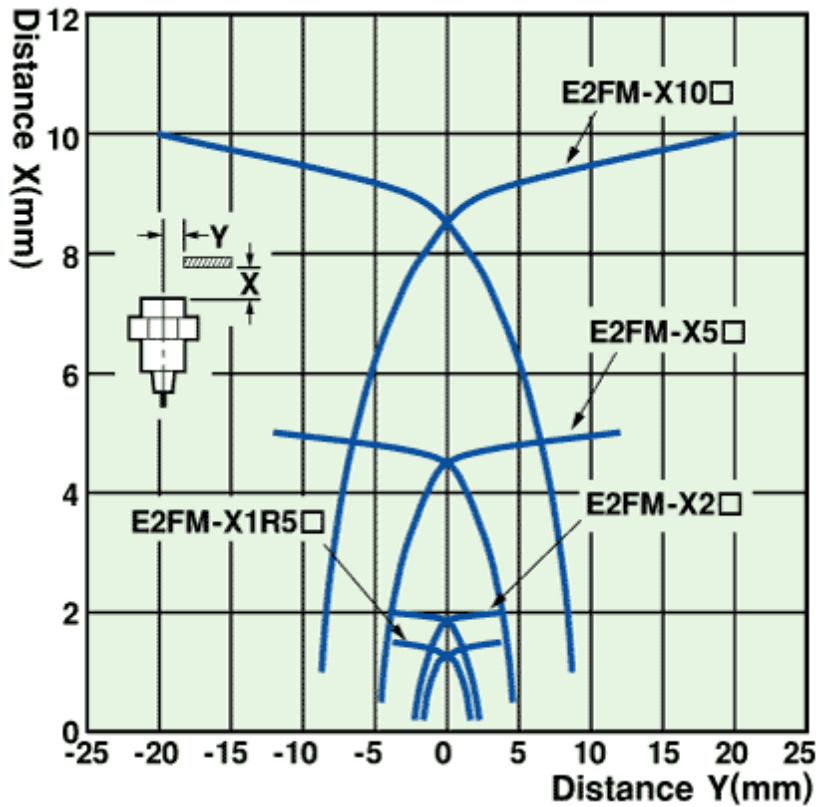
Characteristic chart

As of July 16, 2020

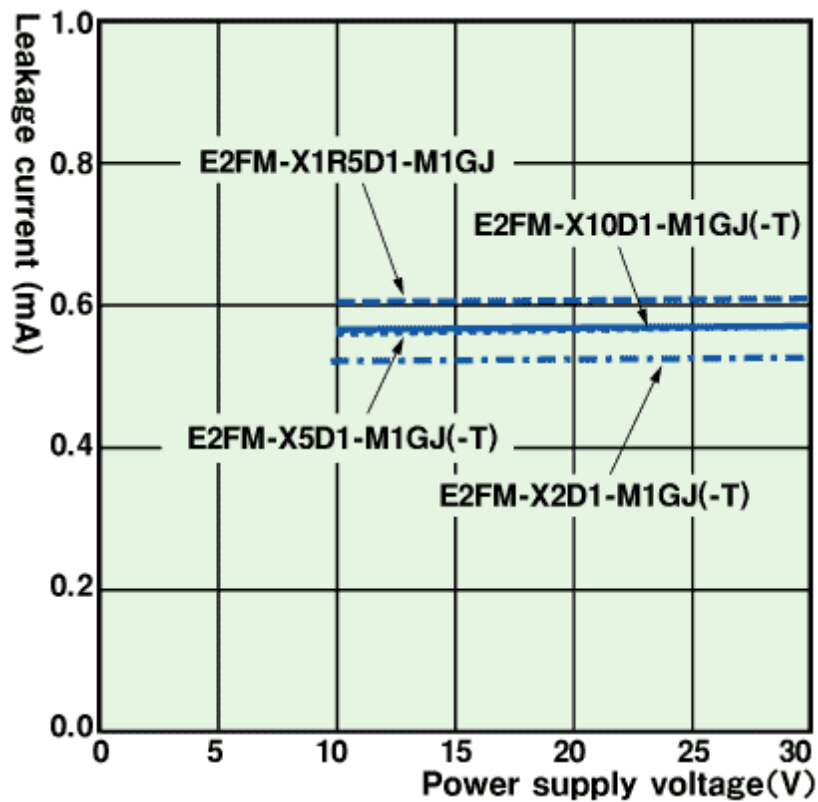
Sensing distance vs. size and material of sensing object



Sensing range

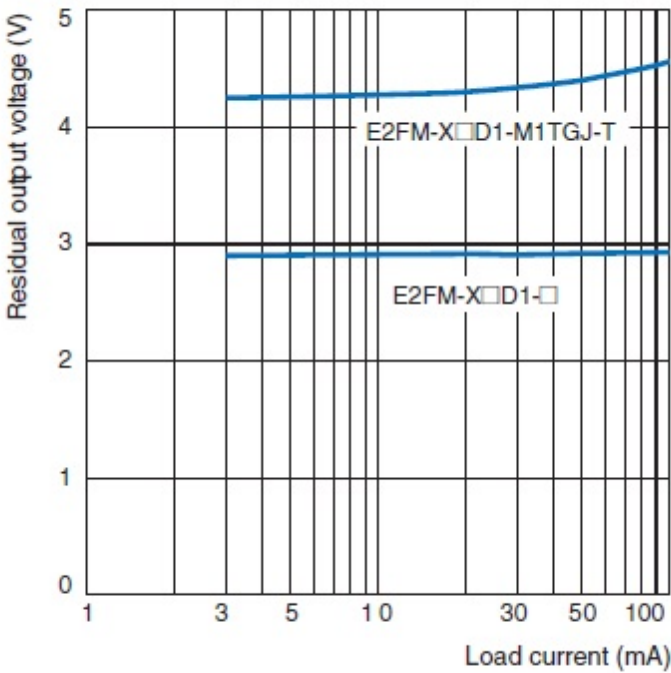


Leakage current



Residual voltage

E2FM-X□D1-M1TGJ (-T)



As of July 16, 2020