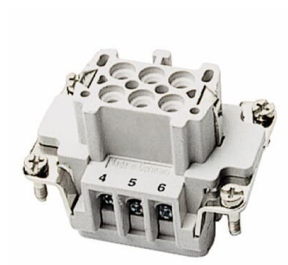




PRODUCT-DETAILS

FS106B

SCREW TERMINAL CONTACT CARRIER



General Information	
Extended Product Type	FS106B
Product ID	7TAA080340R0002
EAN	5415022251791
Catalog Description	SCREW TERMINAL CONTACT CARRIER
Long Description	Female screw terminal insert. For use with B series, 6 contacts with ground.

Ordering	
EAN	5415022251791
UPC	786210116365
Country of Origin	Germany
Selling Unit of Measure	each

Container Information	
Package Level 1 Units	10 EA
Package Level 1 Width	134.62 mm

	5.3 in
Package Level 1 Height	50.8 mm
	2 in
Package Level 1 Depth / Length	200.66 mm
	7.9 in

Additional Information

Application	For use with B series
Brand / Label	Pos-E-Kon
Current Rating	35 A
Effective Date	19990429
Material	Glass-filled Thermoplastic
Product Name	"ELECTRICAL CONNECTORS, RACK AN"
Product Type	Terminal Inserts-Female
Special Functions	IP65 locked positions per DIN VDE 0470, IEC 529
Standards	CSA 70013
Voltage Rating	600 VA °C
Wire Size	20-14 AWG

Certificates and Declarations

Data Sheet, Technical Information	FS106B
-----------------------------------	--------

External Classifications and Standards

ETIM 7	EC000438 - Contact insert for rectangular connectors
ETIM 8	EC000438 - Contact insert for rectangular connectors
UNSPSC	39121410
WEEE Category	Product Not in WEEE Scope
IDEA Granular Category Code (IGCC)	4550 >> Component terminal block

Categories

Low Voltage Products and Systems → Installation Products → Wire Management and Connectivity → Pin & Sleeve Connectors

