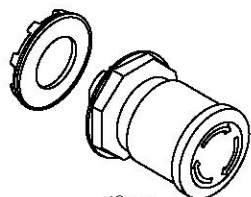


Emergency stop pushbuttons

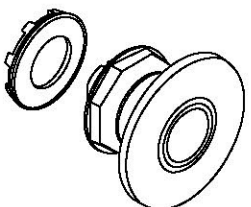
Non-illuminated and illuminated

40mm & 60mm head

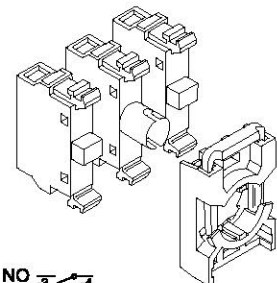
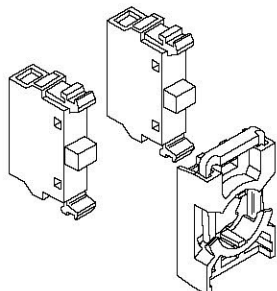
Fulfills IEC 60947-5-5

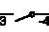
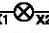



40mm



60mm



NO 
 LB 
 NC 

Non-illuminated, red

Description	Catalog number	List price
Black plastic bezel		
40mm, twist release	G1MPMT3-10R	\$ 42.00
40mm, pull release	G1MPMP3-10R	42.00
60mm, twist release	G1MPMT4-10R	54.00
60mm, pull release	G1MPMP4-10R	54.00
Chrome bezel		
40mm, twist release	G2MPMT3-10R	44.00
40mm, pull release	G2MPMP3-10R	44.00
60mm, twist release	G2MPMT4-10R	56.00
60mm, pull release	G2MPMP4-10R	56.00

Illuminated, red[Ⓢ]

Description	Catalog number	List price
Black plastic bezel		
40mm, twist release	G1MPMT3-11R	\$ 42.00
40mm, pull release	G1MPMP3-11R	42.00
60mm, twist release	G1MPMT4-11R	54.00
60mm, pull release	G1MPMP4-11R	54.00
Chrome bezel		
40mm, twist release	G2MPMT3-11R	44.00
40mm, pull release	G2MPMP3-11R	44.00
60mm, twist release	G2MPMT4-11R	56.00
60mm, pull release	G2MPMP4-11R	56.00

Contact blocks, lamp block and holder[Ⓢ]

Blocks	Catalog number	Ref. code	List price
1 NO with holder	MCBH-10	1SFA 611 605 R1101	\$ 10.00
1 NC with holder	MCBH-01	1SFA 611 605 R1110	10.00
2 NO with holder	MCBH-20	1SFA 611 605 R1102	18.00
2 NC with holder	MCBH-02	1SFA 611 605 R1120	18.00
1 NO + 1 NC with holder	MCBH-11	1SFA 611 605 R1111	18.00
1 NO + 1 LB with holder	MCBH-101	1SFA 611 605 R1201	27.50
1 NC + 1 LB with holder	MCBH-011	1SFA 611 605 R1210	27.50
2 NO + 1 LB with holder	MCBH-201	1SFA 611 605 R1202	35.50
2 NC + 1 LB with holder	MCBH-021	1SFA 611 605 R1220	35.50
1 NO + 1 NC + 1 LB with holder	MCBH-111	1SFA 611 605 R1211	35.50
1 NO without holder	MCB-10	1SFA 611 610 R1001	8.00
1 NC without holder	MCB-01	1SFA 611 610 R1010	8.00
Lamp block for 2 W, max 230 V AC/DC bulb or LED	MLB-1	1SFA 611 620 R1001	17.50
Holder for 3 blocks	MCBH-00	1SFA 611 605 R1100	2.00

To comply with the standard, IEC 60947-5-5, a number of tests have to be conducted:

Durability test	6,050 cycles. This is not a test of mechanical life. The product has a mechanical life of 100,000 operations.	Latching test	Impulse voltage test at 2,500 V
Robustness	The force 113 N applied in three axes	Resetting test	Pulling force < 50 N Turning torque < 1 Nm
Conditioning	Heat and cold, moist atmosphere, and in 5 % NaCl	Shock	15 g shock
		Vibration	2 h at 50m/s ²
		Contacts with positive opening operation	15 g shock

[Ⓢ] No contact in the center position

[Ⓢ] Lamp block MLB-1. Bulb not included. Other lamp block see Accessories, bulb max 2 W.