

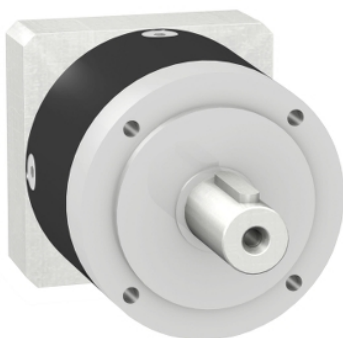
# Product data sheet

## Characteristics

# GBX1600081401F

gearbox with straight teeth GBX- Ø 160 mm-  
reduction 8:1- < 6arcmin- 450 N.m

Product availability: Non-Stock - Not normally stocked in distribution facility



## Main

Range compatibility	Lexium 15 Lexium 32
Product or component type	Planetary gearbox
Gear box type	Straight teeth
Device short name	GBX
Gearbox external diameter	6.3 in (160 mm)
Product compatibility	BSH1401...
Reduction ratio	8:1

## Complementary

Torsional backlash	< 6 arc.min
Torsional rigidity	38 N.m/arcmin
Housing colour	Black
Housing material	Black anodized aluminium
Shaft material	C 45
Additional information	Lubricated for life
Service life in hours	At 100 rpm at 86 °F (30 °C)
Efficiency	96 %
Mounting position	Any position
Maximum radial force Fr	4200 N at 100 rpm, force applied at mid-distance from output shaft during 30000 hour at 30 °C 6000 N at 100 rpm, force applied at mid-distance from output shaft during 10000 hour at 30 °C
Maximum axial force Fa	6000 N at 100 rpm, during 30000 hour at 30°C 8000 N at 100 rpm, during 10000 hour at 30°C
Moment of inertia	0 lb.in <sup>2</sup> (4.63 g.cm <sup>2</sup> )
Continuous output torque	3982.3 lbf.in (450 N.m) at 100 rpm at 86 °F (30 °C)
Maximum output torque	6371.68 lbf.in (720 N.m) at 100 rpm at 86 °F (30 °C)
Product weight	39.68 lb(US) (18 kg)

## Environment

Noise level	70 dB at 1 m, no-load
IP degree of protection	IP54 on shaft output
Ambient temperature for operation	-13...194 °F (-25...90 °C)

## Ordering and shipping details

Category	18283 - NEUGART GEARBOXES
Discount Schedule	PC53
GTIN	003389118144903
Nbr. of units in pkg.	1
Package weight(Lbs)	41.800000000000004
Returnability	N
Country of origin	DE

Contractual warranty

Warranty period	18 months
-----------------	-----------