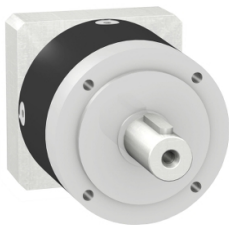


Product data sheet

Specifications



gearbox with straight teeth GBX- Ã~ 160 mm- reduction 15:1- < 10arcmin- 700 N.m

GBX1600151404F

⚠ Discontinued - Service only

⚠ Discontinued on: Jun 15, 2023

⚠ To be end-of-service on: Mar 31, 2028

Product availability: Non-Stock - Not normally stocked in distribution facility

Main

Range Compatibility	Lexium 52 Lexium 62 ILM Lexium 15 Lexium 32 Lexium 62
Product or Component Type	Planetary gearbox
Gear box type	Straight teeth
Device short name	GBX
Gearbox external diameter	6.3 in (160 mm)
Product compatibility	SH3 MH3 ILM
Reduction ratio	15:1

Complementary

Maximum torsional backlash	10 arc.min
Torsional rigidity	41 N.m/arcmin
Housing Colour	Black
Housing material	Black anodized aluminium
Shaft material	C 45
Additional information	Lubricated for life
Service life in hours	30000 h 100 rpm 86.0000000000 °F (30 °C)
Efficiency	94 %
mounting position	Any position
Maximum radial force Fr	4200 N 100 rpm, force applied at mid-distance from output shaft during 30000 hour at 30 °C 6000 N 100 rpm, force applied at mid-distance from output shaft during 10000 hour at 30 °C
Maximum axial force Fa	6000 N 100 rpm, during 30000 hour at 30°C 8000 N 100 rpm, during 10000 hour at 30°C
moment of inertia	0.004 lb.in² (12.35 g.cm²)
Continuous output torque	6195.5 lbf.in (700 N.m) 100 rpm 86.0000000000 °F (30 °C)
Maximum output torque	9912.8 lbf.in (1120 N.m) 100 rpm 86.0000000000 °F (30 °C)

Price is "List Price" and may be subject to a trade discount – check with your local distributor or retailer for actual price.

Disclaimer: This documentation is not intended as a substitute for and is not to be used for determining suitability or reliability of these products for specific user applications

Product Weight	48.5 lb(US) (22 kg)
----------------	---------------------

Environment

Noise level	70 dB 1 m, no-load
IP Degree of Protection	Shaft output IP54
ambient temperature for operation	-13.0000000000...194.0000000000 °F (-25...90 °C)

Ordering and shipping details

Category	US1PC5318283
Discount Schedule	PC53
GTIN	3389118145306
Returnability	No
Country of origin	DE

Packing Units

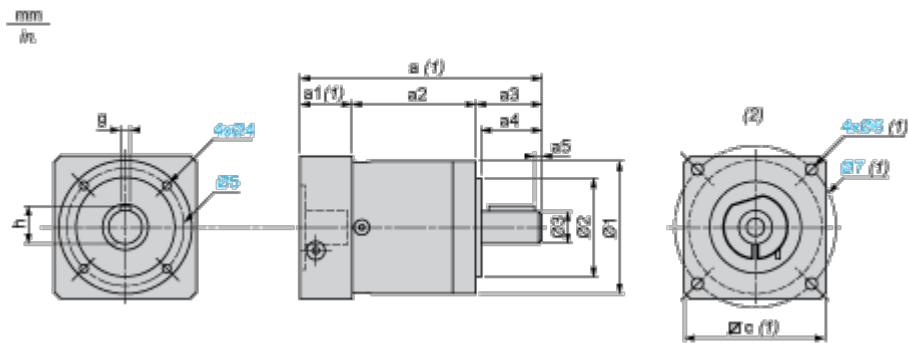
Unit Type of Package 1	PCE
Number of Units in Package 1	1
Package 1 Height	10.2 in (26.0 cm)
Package 1 Width	17.7 in (45.0 cm)
Package 1 Length	10.2 in (26.0 cm)
Package 1 Weight	50.7 lb(US) (23.0 kg)

Contractual warranty

Warranty	18 months
----------	-----------

Dimensions Drawings

Dimensions



- (1) Dimensions a, a1, c, Ø6 and Ø7 depend on the planetary gearbox/servo motor combination
- (2) Servo motor assembly

Dimensions in mm

a2	a3	a4	a5	h	g	Ø1	Ø2	Ø3	Ø4 (oblong)	Ø5
153.5	87	80	8	43	12	160	130 h7	40 h7	M12 x 20	145

Dimensions in mm

a	a1	c	Ø6	Ø7
305	64.5	140 x 140	M10	165

Dimensions in in.

a2	a3	a4	a5	h	g	Ø1	Ø2	Ø3	Ø4 oblong	Ø5
6.04	3.42	3.14	0.31	1.69	0.47	6.29	5.12 h7	1.57 h7	M12 x 0.79	5.70

Dimensions in in.

a	a1	c	Ø6	Ø7
12.00	2.53	0.21 x 0.21	M10	6.49