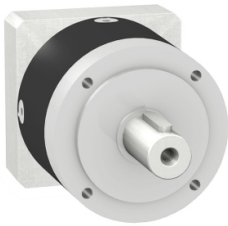


Product datasheet

Specifications



gearbox with straight teeth GBX- Ø
160 mm- reduction 40:1- <
10arcmin- 700 N.m

GBX1600401001F

⚠ Discontinued on: Jun 30, 2023

⚠ Discontinued

Main

Range compatibility	Lexium 32 Lexium 62 Lexium 52 Lexium 15 Lexium 62 ILM
Product or component type	Planetary gearbox
Gear box type	Straight teeth
Device short name	GBX
Gearbox external diameter	160 mm
Product compatibility	SH3 MH3 ILM
Reduction ratio	40:1

Complementary

Maximum torsional backlash	10 arc.min
Torsional rigidity	41 N.m/arcmin
Housing colour	Black
Housing material	Black anodized aluminium
Shaft material	C 45
Additional information	Lubricated for life
Service life in hours	30000 h at 100 rpm at 30 °C
Efficiency	94 %
mounting position	Any position
Maximum radial force Fr	4200 N at 100 rpm, force applied at mid-distance from output shaft during 30000 hour at 30 °C 6000 N at 100 rpm, force applied at mid-distance from output shaft during 10000 hour at 30 °C
Maximum axial force Fa	6000 N at 100 rpm, during 30000 hour at 30°C 8000 N at 100 rpm, during 10000 hour at 30°C
moment of inertia	5.28 g.cm²
Continuous output torque	700 N.m at 100 rpm at 30 °C
Maximum output torque	1120 N.m at 100 rpm at 30 °C
Product weight	22 kg

Price is "List Price" and may be subject to a trade discount – check with your local distributor or retailer for actual price.

Disclaimer: This documentation is not intended as a substitute for and is not to be used for determining suitability or reliability of these products for specific user applications

Environment

Noise level	70 dB at 1 m, no-load
IP degree of protection	Shaft output: IP54
ambient temperature for operation	-25...90 °C

Packing Units

Unit Type of Package 1	PCE
Number of Units in Package 1	1
Package 1 Height	26.0 cm
Package 1 Width	45.0 cm
Package 1 Length	26.0 cm
Package 1 Weight	23.0 kg

Contractual warranty

Warranty	18 months
----------	-----------