

# Product data sheet

Specifications



## Remote control cable, Harmony SCU, 5 m for panel

HMIZSURDP5

### Main

Range of product	Harmony SCU
product or component type	Remote control cable

### Complementary

Cable length	16.4 ft (5 m)
--------------	---------------

### Packing Units

Unit Type of Package 1	PCE
Number of Units in Package 1	1
Package 1 Height	2.8 in (7.2 cm)
Package 1 Width	7.2 in (18.4 cm)
Package 1 Length	10.5 in (26.7 cm)
Package 1 Weight	30.7 oz (870 g)
Unit Type of Package 2	S03
Number of Units in Package 2	6
Package 2 Height	11.8 in (30 cm)
Package 2 Width	11.8 in (30 cm)
Package 2 Length	15.7 in (40 cm)
Package 2 Weight	11.95 lb(US) (5.42 kg)
Unit Type of Package 3	PAL
Number of Units in Package 3	48
Package 3 Height	27.6 in (70 cm)
Package 3 Width	23.6 in (60 cm)
Package 3 Length	31.5 in (80 cm)
Package 3 Weight	95.59 lb(US) (43.36 kg)

Disclaimer: This documentation is not intended as a substitute for and is not to be used for determining suitability or reliability of these products for specific user applications

# Sustainability

**Green Premium™ label** is Schneider Electric's commitment to delivering products with best-in-class environmental performance. Green Premium promises compliance with the latest regulations, transparency on environmental impacts, as well as circular and low-CO<sub>2</sub> products.

**Guide to assessing product sustainability** is a white paper that clarifies global eco-label standards and how to interpret environmental declarations.

[Learn more about Green Premium >](#)

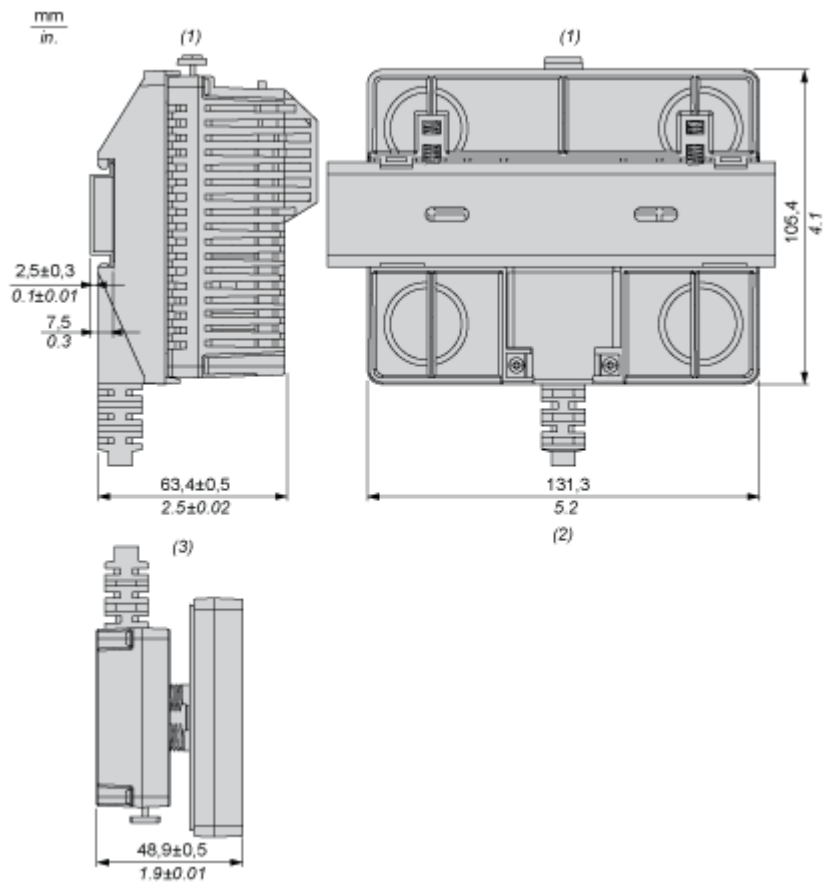
[Guide to assess a product's sustainability >](#)

## Well-being performance

✓	Reach Free Of Svhc	
✓	Toxic Heavy Metal Free	
✓	Mercury Free	
✓	Rohs Exemption Information	Yes
Reach Regulation	<a href="#">REACH Declaration</a>	
Eu Rohs Directive	Pro-active compliance (Product out of EU RoHS legal scope) <a href="#">EU RoHS Declaration</a>	
China Rohs Regulation	<a href="#">China RoHS declaration</a>	
Weee	The product must be disposed on European Union markets following specific waste collection and never end up in rubbish bins	

Dimensions Drawings

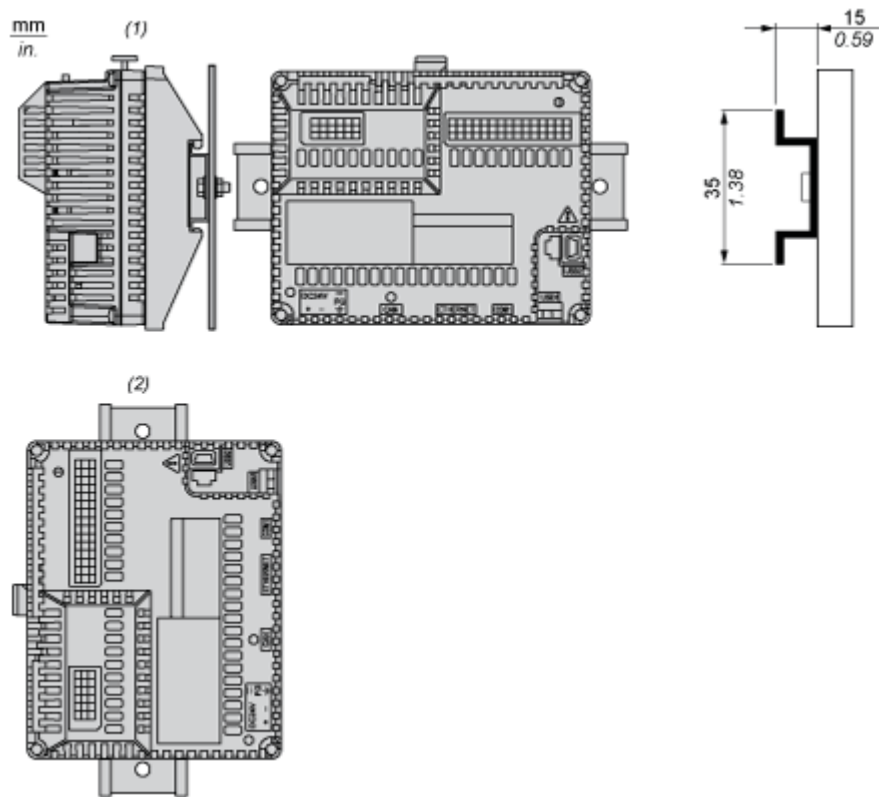
Dimensions



- (1) Rear module
- (2) Rear module remote cable
- (3) Panel remote cable

Mounting and Clearance

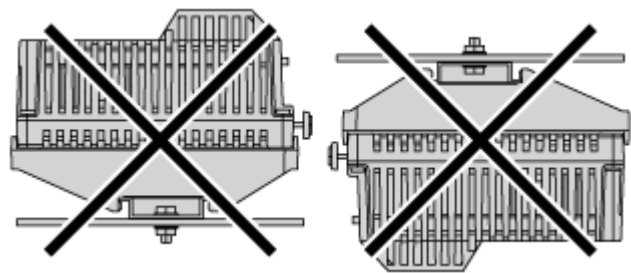
Recommended Mounting position



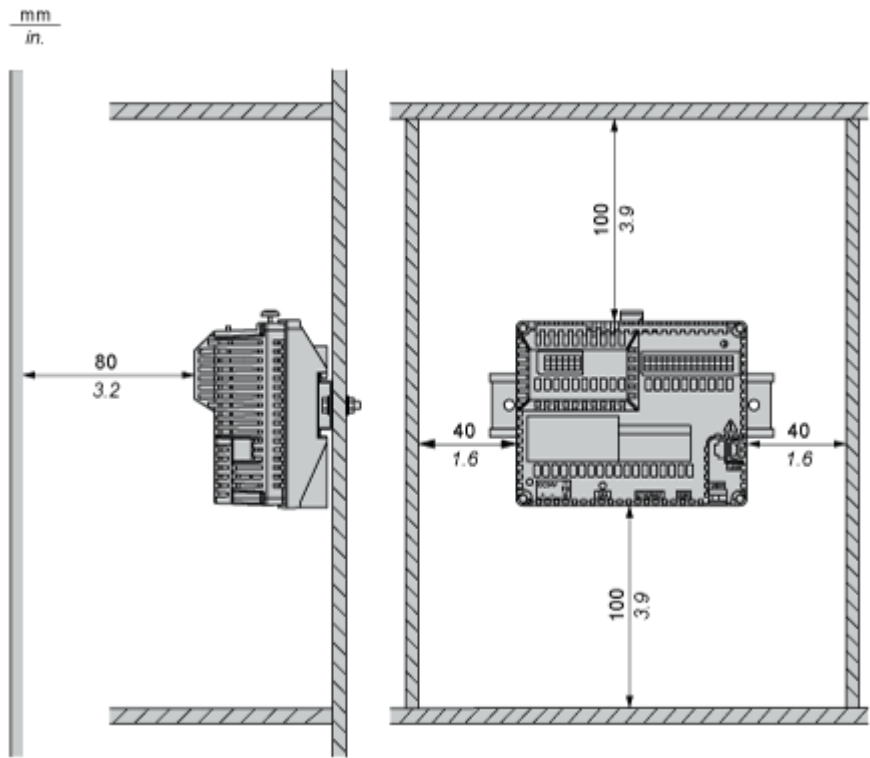
- (1) Horizontal mounting
- (2) Vertical mounting

No Recommended Mounting Position

---



Clearance



Keep adequate spacing for proper ventilation to maintain an ambient temperature between 0...50 °C (32...122 °F) for horizontal installation and 0...40 °C (32...104 °F) for vertical installation.