

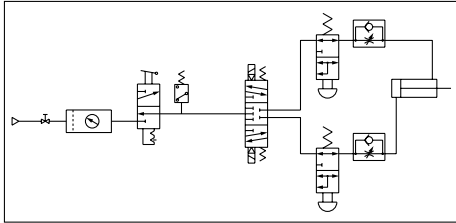
Series KE □

Residual Pressure Release Valve with One-touch Fitting

RoHS

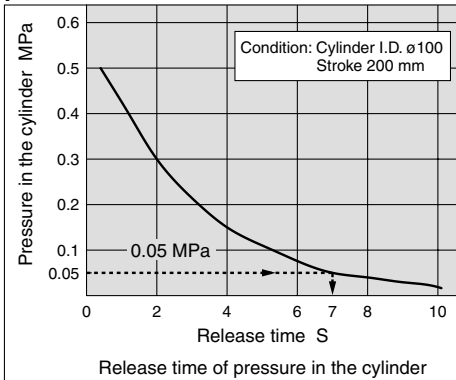
Residual pressure in the cylinder can be easily released with one push of the push button.

Example of circuit diagram (Residual exhaust of air cylinder)



- Easy operation with a push button.
- Piping parts are available in two types: with One-touch fittings and with Rc thread
Applicable tubing diameter: $\phi 6$, $\phi 8$, $\phi 10$, $\phi 12$
Connection thread Rc: 1/4, 3/8
- Residual pressure release time: Approx. 7 seconds (time required for the pressure to be 0.5 MPa to 0.05 MPa)

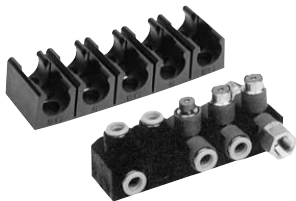
Example of air cylinder residual pressure release time



With One-touch fitting without a push button guard

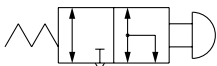


With One-touch fitting with a push button guard
Rc thread with a push button guard



Multi-holder (Series TMA) for fixing the KE □ series
Refer to page 401 for details.

JIS Symbol

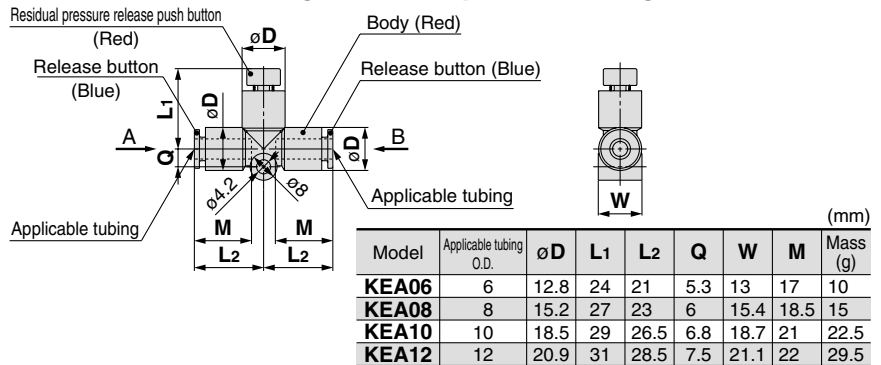


Specifications

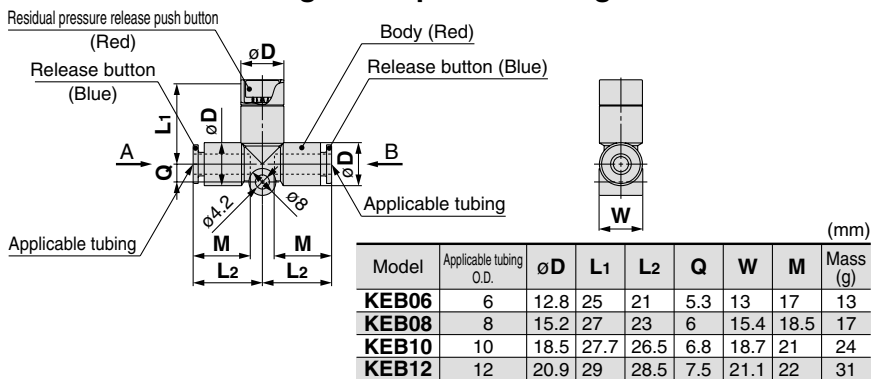
Model	Without a push button guard	KEA06	KEA08	KEA10	KEA12
	With a push button guard	KEB06	KEB08	KEB10	KEB12
	Rc thread with a push button guard	—	KEC-02	—	KEC-03
Applicable tubing O.D. or connection thread		$\phi 6$	$\phi 8$, Rc 1/4	$\phi 10$	$\phi 12$, Rc 3/8
Applicable tubing material	Nylon, Soft nylon, Polyurethane, FEP, PFA				
Fluid	Air				
Operating pressure range	0 to 1 MPa				
Ambient and fluid temperature	-5 to 60°C (No freezing)				
Effective area	Nylon	13.1 mm ²	26.1 mm ²	41.5 mm ²	58.3 mm ²
A↔B	Polyurethane	13.1 mm ²	18.0 mm ²	29.5 mm ²	46.1 mm ²
Residual pressure release effective area	1.8 mm ²				
Color	Body	Red			
	Push button	Blue			
	Release button (Tube connection part)	Blue			

Dimensions

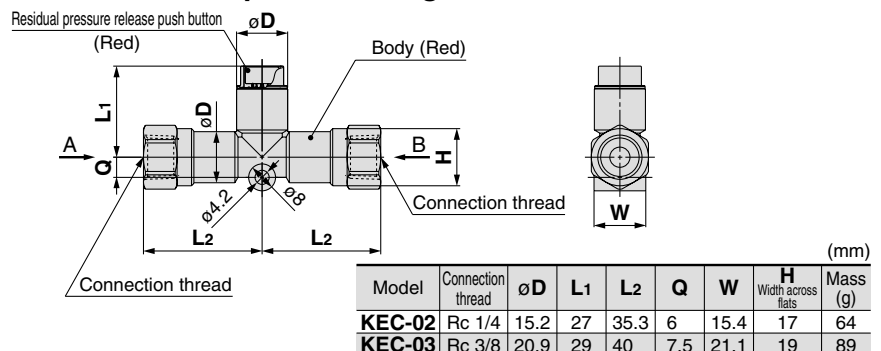
With One-touch fitting without a push button guard: KEA



With One-touch fitting with a push button guard: KEB



Rc thread with a push button guard: KEC



AS

ASP

ASN

AQ

ASV

AK

VCHC

ASS

ASR

ASQ

KE

TMH