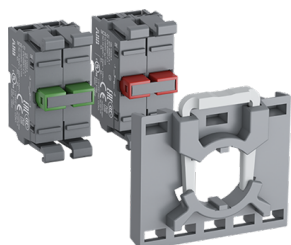


PRODUCT-DETAILS

KTR1-1013

KTR1-1013 Transformer block



General Information

Extended Product Type	KTR1-1013
Product ID	1SFA616950R1013
EAN	7320500204290
Catalog Description	KTR1-1013 Transformer block
Long Description	Modular Transformer Block for Modular Pilot Light - Primary Voltage: 380-420 V AC - Secondary Voltage: 24 V AC

Ordering

EAN	7320500204290
Minimum Order Quantity	1 piece
Customs Tariff Number	85369001

Dimensions

Product Net Width	0.05 m
Product Net Height	0.03 m
Product Net Depth / Length	0.035 m
Product Net Weight	0.096 kg

Container Information

Package Level 1 Units	1 piece
Package Level 1 Width	0.1 m
Package Level 1 Height	0.03 m
Package Level 1 Depth / Length	0.1 m
Package Level 1 Gross Weight	0.096 kg
Package Level 1 EAN	7320500204290
Package Level 2 Units	10 piece

Environmental

RoHS Status	Following EU Directive 2015/863 July 22, 2019 (RoHS 3)
-------------	--

Additional Information

Accessory Type	Transformer and diode blocks
Mounting Type	Front mounting
Primary Voltage	380-420 V AC
Product Main Type	KTR1
Product Name	Transformer block
Product Range	Modular range
Product Type	KTR
Secondary Voltage	24 V AC
Suitable For	Pilot lights
Upper Button Text	TRANSFORMATOR 380-420V AUF 24VAC IP00 MIT FASSUNG BA9S

Certificates and Declarations (Document Number)

Data Sheet, Technical Information	1SFC151007C02__
Declaration of Conformity - CE	2CMT2015-005453
Environmental Information	1SFC151005D0201
Instructions and Manuals	1SFC151011M0201
RoHS Information	2CMT2015-005453

Classifications

ETIM 4	EC002024 - Accessories for control circuit devices
ETIM 5	EC002024 - Accessories for control circuit devices
ETIM 6	EC000203 - Lamp transformer for control circuit devices
ETIM 7	EC000203 - Lamp transformer for control circuit devices
Object Classification Code	B
UNSPSC	39120000
WEEE Category	5. Small Equipment (No External Dimension More Than 50 cm)

Categories

Low Voltage Products and Systems → Control Products → Pilot Devices → Modular Plastic Range

