








ø16 LB Series Pilot Lights

Pilot Lights

Solder/Tab Terminal

Package Quantity: 1

Part No. / Shape	LB①P-②T③④*						
							
	Round	Square	Rectangular	Rectangular with 3-sided Barrier	Rectangular with 3-sided Barrier	Dome	
② Lens Shape	③ LED Operating Voltage	Part No.	* Illumination Color Code				
Flush	24V AC/DC	LB①P-1T04*	Specify the color code in place of * in the Part No. A: amber G: green PW: pure white R: red S: blue W: white Y: yellow				
Dome	24V AC/DC	LB1P-2T04*					

- Pilot lights contain an LED unit. For maintenance LED units see page 60.
- Legends and symbols can be engraved on a marking plate or film to be inserted under the lens by users for labelling purposes. See page 63 for details.
- White lens type (when light is off) are available. Clear lens is used instead of colored lens for amber, green, red, and blue pilot lights. Amber, green, red, or blue LED units are used. To specify, see Part Number Development below.
- PC board terminals available. To specify, see Part Number Development below.
- 5V DC and 12V AC/DC LED operating voltages also available. To specify, see Part Number Development below.

Part Number Development

LB①P-②T③④*

① Shape

Code	Shape
1	Round
2	Square
3	Rectangular
4	Rectangular with 3-sided Barrier

② Lens Shape

Code	Lens Shape
1	Flush
2	Dome

③ LED Operating Voltage

Code	Rated Operating Voltage
1	5V DC
3	12V AC/DC
4	24V AC/DC

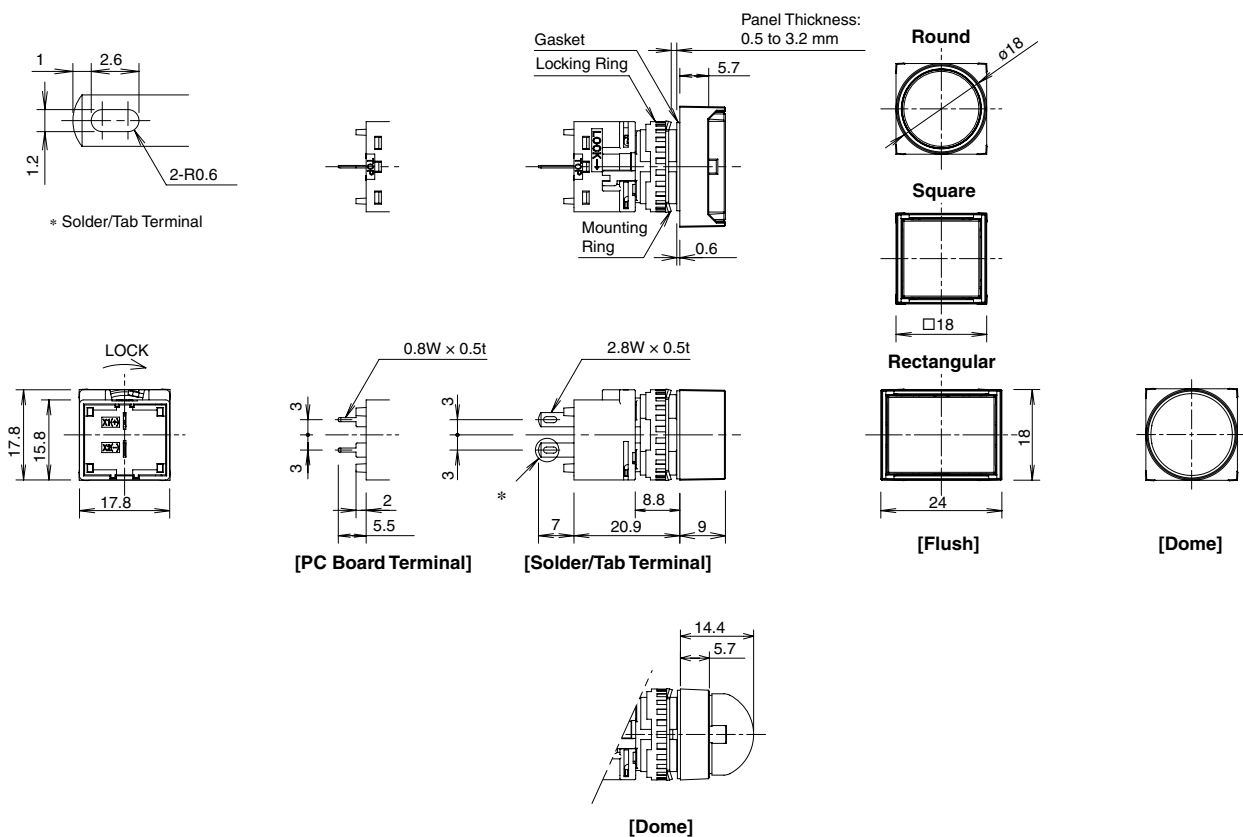
- Round only for dome.

⑤ Others

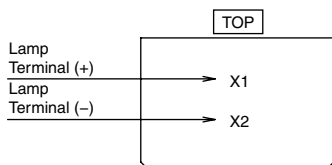
Code	Specification	Part No. Example
Blank	Solder/Tab Terminal	—
W	White Lens Type (When Light is Off)	LB1P-1T04W*
V	PC Board Terminal	LB1P-1T04V*
VW	White Lens Type (When light is Off) with PC Board Terminal	LB1P-1T04VW*

- Specify the color code in place of * in the table above
- Color code for white lens type: A (amber), G (green), R (red), and S (blue) only.

Dimensions

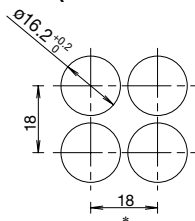


Terminal Arrangement (Bottom View)



Mounting Hole Layout

Round (LB1/LB2/LB3/LB4)



*: 24 mm for rectangular units.
Note: When using rubber boot or terminal cover, see dimensions on 56 and 58.

- For details on pc board and circuit design, see page 50.
- For details on single board mounting, see page 51.

Flush Silhouette
LB Series
Flush Silhouette
LBW Series
ø16
LB Series
UP Series

Illuminated Pushbutton
Pilot Light
Pushbutton
Selector
Illuminated Selector
Key Selector
Lever Switch
Buzzer
Accessories
Maintenance Parts
Panel Cut-out
Instructions