




ø16 **LB Series Illuminated Pushbuttons**

Illuminated Pushbuttons

Solder/Tab Terminal

Package Quantity:1

Part No. / Shape	LB①L-②1T③④⑤*						
	 Round		 Square		 Rectangular		 Rectangular with 3-sided Barrier
② Operation	③ Contact	④ LED Operating Voltage	Part No.		* Illumination Color Code		
			Gold Contact	Silver Contact			
Momentary	SPDT	24V AC/DC	LB①L-M1T14*	LB①L-M1T54*	Specify the color code in place of * in the Part No. A: amber G: green PW: pure white R: red S: blue W: white Y: yellow		
	DPDT		LB①L-M1T24*	LB①L-M1T64*			
Maintained	SPDT	24V AC/DC	LB①L-A1T14*	LB①L-A1T54*			
	DPDT		LB①L-A1T24*	LB①L-A1T64*			

- Illuminated pushbuttons contain an LED unit. For details on LED units, see page 60.
- Illuminated pushbuttons can be used with legend markings. Engraving can be done on a marking plate which is placed in the lens, or a clear film can be printed and placed in the lens. See page 63 for details on the marking plate and film.
- White lens type (when light is off) are available. Clear lens is used instead of colored lens for amber, green, red, and blue illuminated pushbuttons. Amber, green, red, or blue LED units are used. To specify, see Part Number Development below.
- PC board terminals available for gold contacts. To specify, see Part Number Development below.
- 5V DC and 12V AC/DC LED operating voltages also available. To specify, see Part Number Development below.

Part Number Development

LB①L-②1T③④⑤*

① Shape

Code	Shape
1	Round
2	Square
3	Rectangular
4	Rectangular with 3-sided Barrier

② Operation

Code	Operation
A	Maintained
M	Momentary

③ Contacts

Code	Contact
1	Gold/SPDT
2	Gold/DPDT
5	Silver/SPDT
6	Silver/DPDT

④ LED Operating Voltage

Code	Rated Operating Voltage
1	5V DC
3	12V AC/DC
4	24V AC/DC

⑤ Others

Code	Specification	Part No. Example
Blank	Solder/Tab Terminal	—
W	White Lens Type (When Light is Off)	LB1L-M1T14W*
V	PC Board Terminal (Gold Contact Only)	LB1L-M1T14V*
VW	White Lens Type (When Light is Off) with PC Board Terminal (Gold Contact Only)	LB1L-M1T14VW*

- Specify the color code in place of * in the table above
- Color code for white lens type: A (amber), G (green), R (red), and S (blue) only.

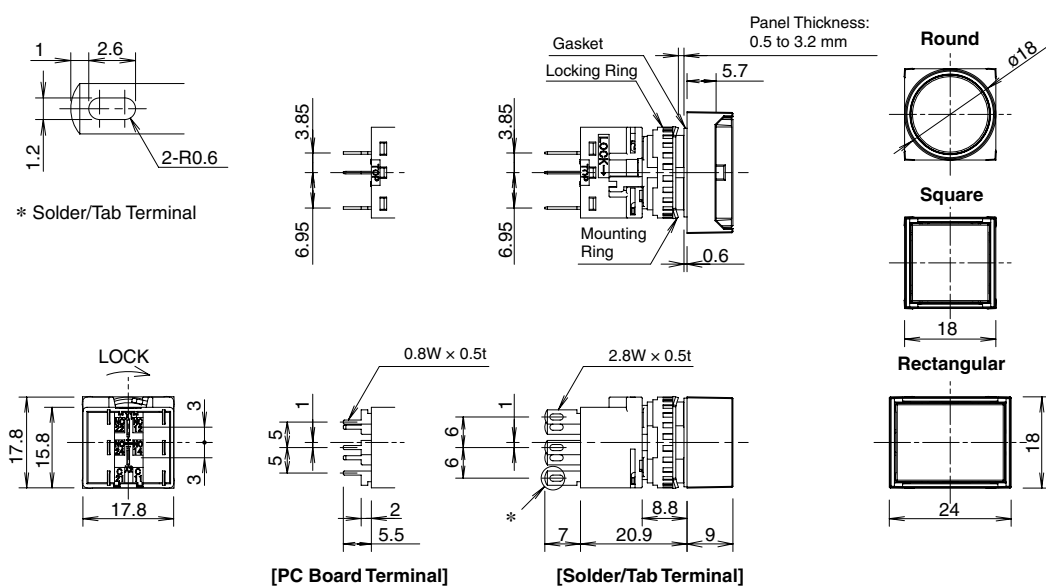
Dimensions

Flush Silhouette
LB Series

Flush Silhouette
LBW Series

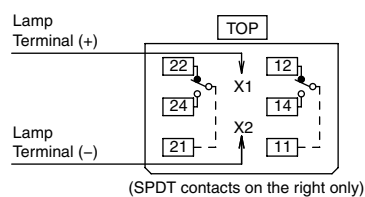
ø16
LB Series

UP Series



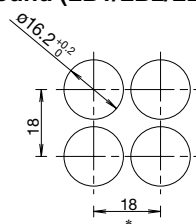
All dimensions in mm.

Terminal Arrangement (Bottom View)



Mounting Hole Layout

Round (LB1/LB2/LB3/LB4)



*: 24 mm for rectangular units.

Note: When using rubber boot or terminal cover, see dimensions on 56 and 58.

- For details on pc board and circuit design, see page 50.
- For details on single board mounting, see page 51.

Illuminated Pushbutton

Pilot Light

Pushbutton

Selector

Illuminated Selector

Key Selector

Lever Switch

Buzzer

Accessories

Maintenance Parts

Panel Cut-out

Instructions