



Plug-in relay complete unit 2 W, 230 V AC LED module red Socket with logic isolation Spring-type terminal (push-in)

product brand name	SIRIUS
product designation	Coupling relay with plug-in relay
product type designation	LZS
General technical data	
display version LED	Yes
percental drop-out voltage related to the input voltage	30 %
protection class IP	IP20
operating frequency without load	36 000 1/h
operating frequency with load	360 1/h
switching behavior	monostable
design of the switching function	changeover switch
design of the switching function positively driven	No
mechanical service life (operating cycles) typical	20 000 000
electrical endurance (operating cycles) at AC-15 at 230 V typical	180 000
thermal current	12 A
reference code according to IEC 81346-2	K
Substance Prohibitance (Date)	05/01/2012
Control circuit/ Control	
control supply voltage at AC	
• at 50 Hz rated value	230 V
• at 60 Hz rated value	230 V
control supply voltage frequency	
• 1 rated value	50 Hz
• 2 rated value	60 Hz
supply voltage frequency for auxiliary and control circuit rated value	50 ... 60 Hz
operating range factor control supply voltage rated value at AC at 50 Hz	
• initial value	0.9
• full-scale value	1.1
operating range factor control supply voltage rated value at AC at 60 Hz	
• initial value	0.9
• full-scale value	1.1
design of the relay operating mechanism	poled
product component plug-in socket	Yes
design of the snap-on socket base	Socket with logic isolation
Short-circuit protection	
design of the fuse link for short-circuit protection of the auxiliary switch required	fuse gG: 6 A
Auxiliary circuit	

<b>type of switching contact</b>	Changeover contact	
<b>material of switching contacts</b>	AgNi 90/10	
<b>number of NC contacts for auxiliary contacts</b>	0	
<b>number of NO contacts for auxiliary contacts</b>	0	
<b>number of CO contacts for auxiliary contacts</b>	2	
<b>operational current of auxiliary contacts at AC-15</b> <ul style="list-style-type: none"><li>• at 250 V</li></ul>	2 A	
<b>operational current at DC-13 at 24 V rated value</b>	4 A	
<b>operational current of auxiliary contacts at DC-13</b> <ul style="list-style-type: none"><li>• at 24 V</li></ul>	4 A	
<b>Main circuit</b>		
<b>type of voltage</b>	AC	
<b>ampacity of the output relay at DC-13</b> <ul style="list-style-type: none"><li>• at 24 V</li></ul>	4 A	
<b>Display</b>		
display version as status display by LED	LED red	
<b>Connections/ Terminals</b>		
<b>product function removable terminal</b>	No	
<b>type of electrical connection</b>	spring-loaded terminals	
<b>type of connectable conductor cross-sections</b> <ul style="list-style-type: none"><li>• solid</li><li>• finely stranded with core end processing</li><li>• finely stranded without core end processing</li><li>• at AWG cables solid</li><li>• at AWG cables stranded</li></ul>	1x (0,75 ... 1,5), 2x (0,75 ... 1,0), 2x 1,5 1x (0,75 ... 1,5), 2x 0,75 1x (0,75 ... 1,5), 2x (0,75 ... 1,0), 2x 1,5 1x (18 ... 16), 2x (18 ... 16) 1x (18 ... 16), 2x (18 ... 16)	
<b>connectable conductor cross-section</b> <ul style="list-style-type: none"><li>• solid</li><li>• finely stranded with core end processing</li><li>• finely stranded without core end processing</li></ul>	0.75 ... 1.5 mm² 0.75 ... 1.5 mm² 0.75 ... 1.5 mm²	
<b>AWG number as coded connectable conductor cross section</b> <ul style="list-style-type: none"><li>• solid</li><li>• stranded</li></ul>	18 ... 16 18 ... 16	
<b>Installation/ mounting/ dimensions</b>		
<b>mounting position</b>	any	
<b>fastening method</b>	snap-on mounting	
<b>height</b>	98 mm	
<b>width</b>	28 mm	
<b>depth</b>	79 mm	
<b>Ambient conditions</b>		
<b>ambient temperature</b> <ul style="list-style-type: none"><li>• during operation</li><li>• during storage</li><li>• during transport</li></ul>	-40 ... +70 °C -25 ... +70 °C -25 ... +70 °C	
<b>Certificates/ approvals</b>		
<b>General Product Approval</b>	<b>Declaration of Conformity</b>	<b>other</b>

[Confirmation](#)



[Confirmation](#)

#### Further information

Information- and Downloadcenter (Catalogs, Brochures,...)

<https://www.siemens.com/ic10>

Industry Mall (Online ordering system)

<https://mall.industry.siemens.com/mall/en/en/Catalog/product?mlfb=LZS:PT2D5T30>

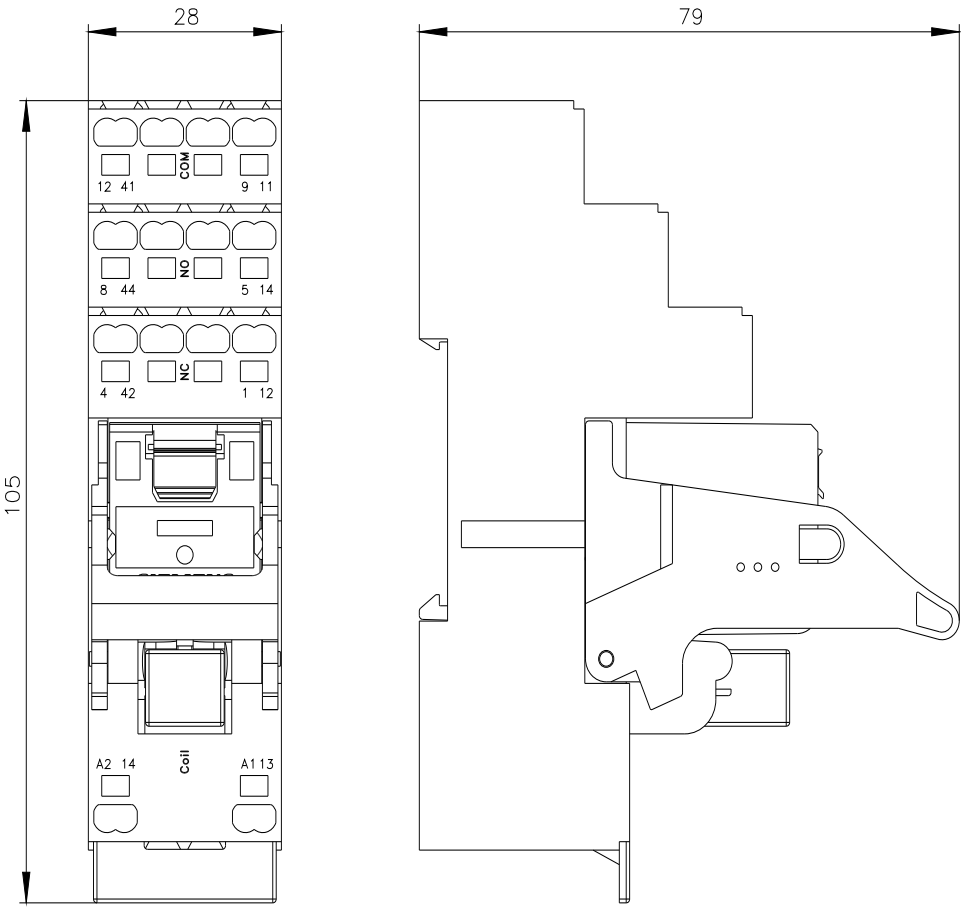
Cax online generator

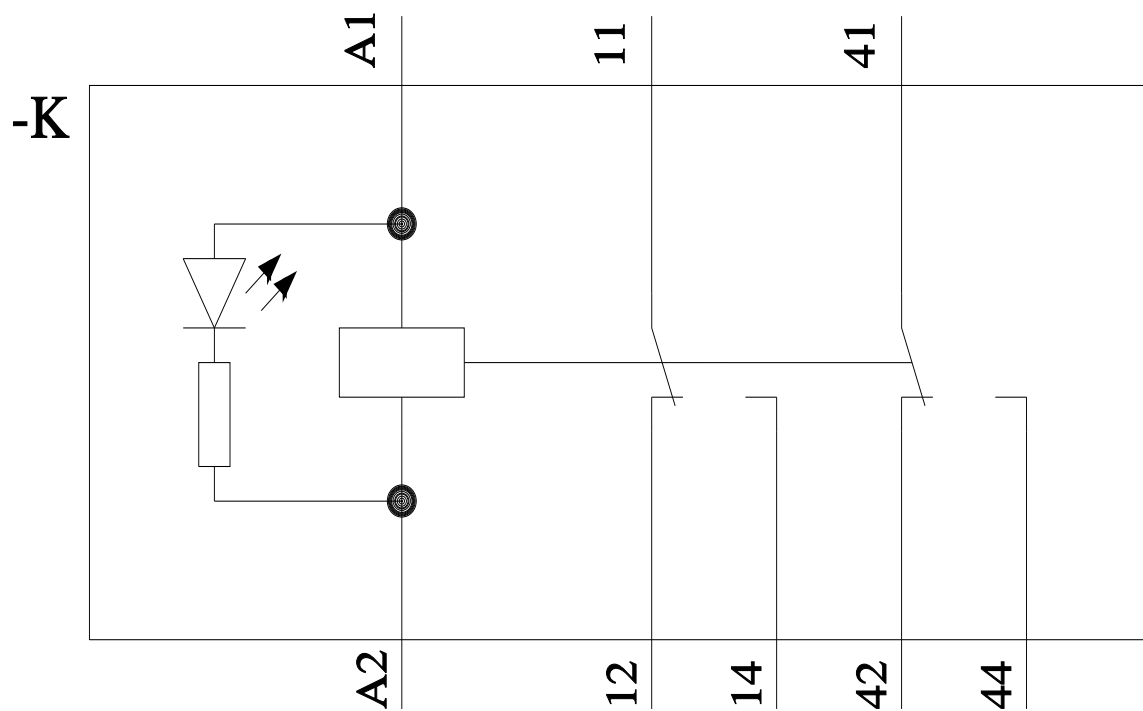
<http://support.automation.siemens.com/WW/CAXorder/default.aspx?lang=en&mlfb=LZS:PT2D5T30>

Service&Support (Manuals, Certificates, Characteristics, FAQs,...)

<https://support.industry.siemens.com/cs/ww/en/ps/LZS:PT2D5T30>

Image database (product images, 2D dimension drawings, 3D models, device circuit diagrams, EPLAN macros, ...)





last modified:

10/13/2021 [🔗](#)