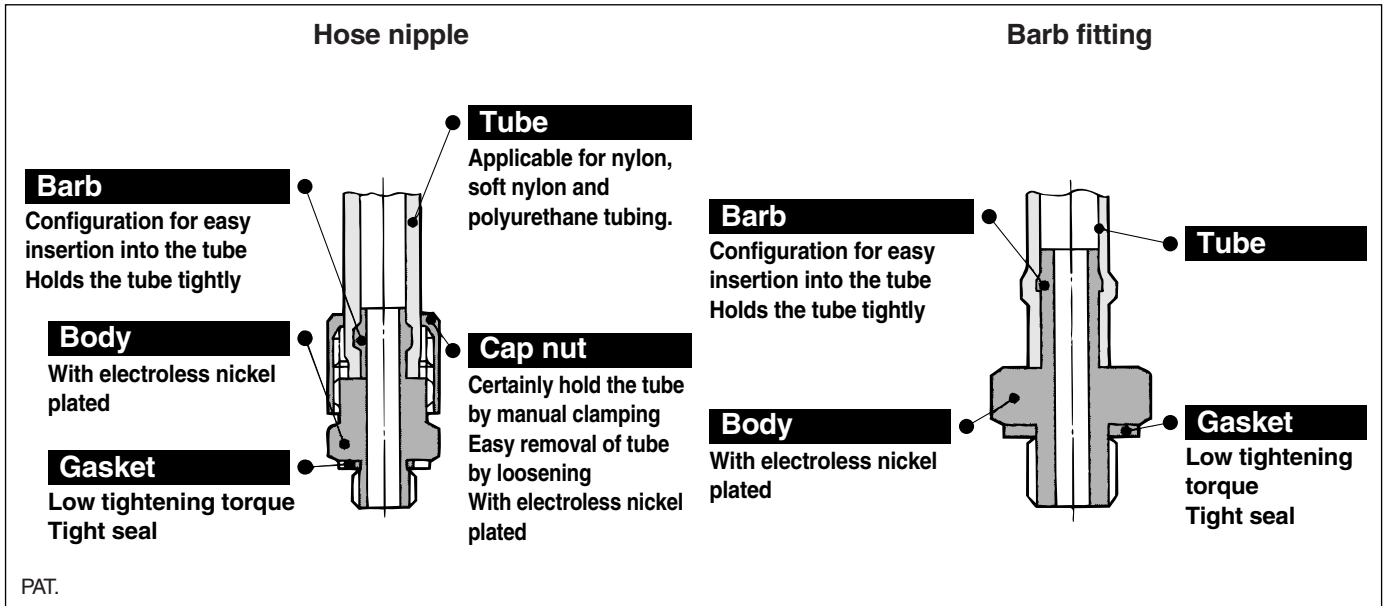


Miniature Fittings

M3, M5, R 1/8

Series M



Compact piping space

Hose nipple tubing connection/disconnection is simple while keeping a large retaining force.

Line up various styles

For air connection in confined areas.

Accepts many styles of plastic tubing

Hose nipple and hose elbow accepts nylon, soft nylon, and polyurethane tubing.



Specifications

Applicable tubing material		Nylon	Soft nylon	Polyurethane
Applicable tubing	M3	—	ø3.18/ø2.18	ø3.18/ø2, ø4/ø2.5
	M5-R 1/8	ø4/ø2.5 ø6/ø4	ø4/ø2.5 ø6/ø4	ø3.18/ø2 ø4/ø2.5, ø6/ø4
Max. operating pressure (at 20°C)		1.5 MPa	1.0 MPa	0.8 MPa
Connection size		M3, M5, R 1/8		
Thread		JIS B 0209 Class 2 (Metric coarse thread), JIS B 0203 (Taper pipe thread)		

Principal Parts Material

Material	Body	
	Gasket	C3604BD (Nipple M-3N, M-5N: Stainless steel 303)

Fitting Markings for Applicable Tubing Material (Barb fitting, Barb elbow, Barb elbow (H))

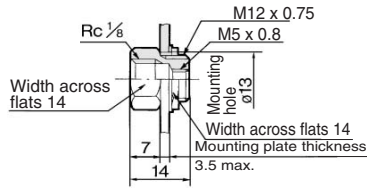
Tubing material determines the compatible fittings. (Refer to the table below.)

Connection	Tubing	Fitting marking for applicable tubing material			Surface treatment (Color)
		Barb fittings	Barb elbow	Barb elbow (H)	
M3	Soft nylon tubing Polyurethane tubing		—		Electroless nickel plated (Silver color)
	Nylon tubing				Electroless nickel plated (Silver color)
R 1/8, M5	Soft nylon tubing Polyurethane tubing	Marking	Marking	Marking	Electroless nickel plated (Black color) [Except stud]
	Nylon tubing				Electroless nickel plated (Silver color)

* Body of M-5E, M-5ER, M-5M is not surface-treated.
Electroless nickel plate treated is available as option -X2.

Series M5

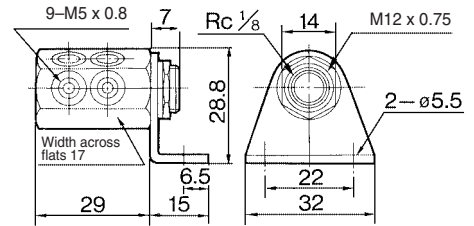
Bulkhead Reducer: M-5ER



For the plate thickness 3.5 to 6 mm, give the plate tapping M12 x 0.75, and then screw-in.

Weight: 12 g

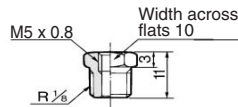
Manifold: M-5M



Panel mounting plate thickness max. 3.5 mm
For the plate thickness 3.5 to 6 mm, give the plate tapping M12 x 0.75, and then screw-in.

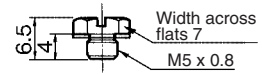
Weight: 59 g

Bushing: M-5B



Weight: 5.8 g

Plug: M-5P



Weight: 1.3 g

Gasket: M-5G1



Weight: 0.01 g

Gasket: M-5GH



Weight: 0.04 g

- K
- M
- H
- D
- MS
- T
- VMG

⚠ Precautions

Refer to pages 15-18-3 to 15-18-4 in the front matter for Safety Instructions and Common Precautions on the products mentioned in this catalog, and refer to pages 15-1-10 to 15-1-11 for Precautions on every series.

Tightening of M3/M5 Threads

⚠ Caution

1. Tighten by hand, and give it an additional 1/4 rotation with wrench. (The additional rotation should be doubled to 1/2 when using the universal elbow, universal tee, etc. which have two gaskets.) If tightened excessively, thread portion may be damaged and gasket may be deformed. This will cause air leakage. On the contrary, if tightened insufficiently, thread may loosen causing air leakage.

Use of Tube with Hose Nipple

⚠ Caution

1. Cut the tube perpendicularly to the tube axis to a little longer than required length. (Use tube cutter "TK-1", "TK-2" or "TK-3".)
2. Pass the tube through the cap nut.
3. Push the tube until it comes to the end of the barb portion, or it may cause air leakage or hose releasing.
4. Tighten the cap nut firmly by hand on the fitting.

Use of Tube with Barb Fitting

⚠ Caution

1. Cut the tube perpendicularly to the tube axis to a little longer than required length. (Use tube cutter "TK-1", "TK-2" or "TK-3".)
2. Push the tube until it comes to the end of the barb portion, or it may cause air leakage or release hose.