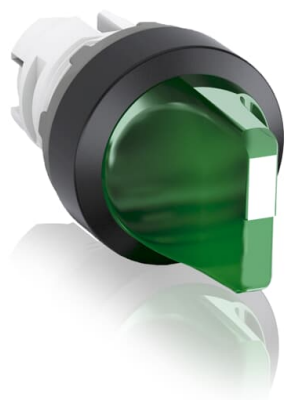


PRODUCT-DETAILS

M2SS1-11G

M2SS1-11G Selector Switch



General Information

Extended Product Type	M2SS1-11G
Product ID	1SFA611200R1102
EAN	7320500283332
Catalog Description	M2SS1-11G Selector Switch
Long Description	Modular Selector Switch - 2-Pos Maintained - Short handle - Green - Illuminated - Black plastic - No contact block

Ordering

E-Number (Finland)	2338283
E-Number (Norway)	4372402
E-Number (Sweden)	3715802
EAN	7320500283332
Minimum Order Quantity	10 piece
Customs Tariff Number	8536501999

Dimensions

Product Net Width	0.03 m
Product Net Height	0.03 m
Product Net Depth / Length	0.05 m
Product Net Weight	0.024 kg

Container Information

Package Level 1 Units	bag 1 piece
Package Level 1 Width	0.11 m
Package Level 1 Height	0.03 m
Package Level 1 Depth / Length	0.15 m
Package Level 1 Gross Weight	0.024 kg
Package Level 1 EAN	7320500283332

Environmental

Ambient Air Temperature	Operation -25 ... +70 °C Storage -40 ... +85 °C
RoHS Status	Following EU Directive 2015/863 July 22, 2019 (RoHS 3)

Additional Information

Actuator Type	Short handle
Bezel Material	Black Plastic
Block	No contact block
Color	Green
Degree of Protection	Front IP66
Function	Maintained
Illumination	Illuminated
Maintained Positions	B, C
Mechanical Durability	0.5 million
Mounting Position	Horizontally mounted
Product Main Type	M2SS1
Product Name	Selector Switch
Product Range	Modular
Product Type	M2SS
RoHS Date	0635 4
Sub-Function	2-position

Certificates and Declarations (Document Number)

Data Sheet, Technical Information	1SFC151007C02__
Declaration of Conformity - CE	2CMT2015-005452
DNV GL Certificate	E-14107
Environmental Information	1SFC151010D0201
Instructions and Manuals	1SFC151011M0201
RoHS Information	2CMT2015-005452

Classifications

ETIM 4	EC002024 - Accessories for control circuit devices
ETIM 5	EC000222 - Front element for selector switch
ETIM 6	EC000222 - Front element for selector switch
ETIM 7	EC000222 - Front element for selector switch
Object Classification	S

Code

UNSPSC

39121500

WEEE Category

Product Not in WEEE Scope

Categories

Low Voltage Products and Systems → Control Products → Pilot Devices → Modular Plastic Range

