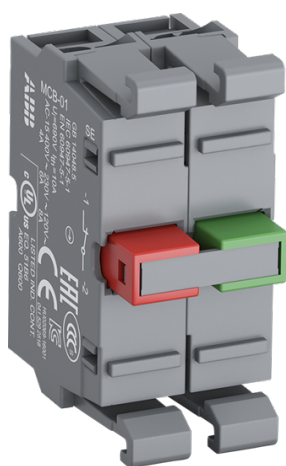


PRODUCT-DETAILS

MCB-11G

MCB-11G Contact Block



General Information

Extended Product Type	MCB-11G
Product ID	1SFA611610R1111
EAN	7320500544402
Catalog Description	MCB-11G Contact Block

Long Description	<p>The MCB-11G Contact Block is: - Non-illuminated - Gold plated double contact block - Front mounting - silver gold plated (Ag/Au) - 1 NO - 1NC - 690 V</p> <p>This Contact Block is part of ABB's modular plastic range, the most versatile range with a high level of flexibility and market-leading electrical ratings. Engineered for total reliability, longer lifetime, and highest mechanical durability. Self-cleaning contacts ensure reliable operation without the need for maintenance, increasing uptime. A high degree of protection guarantees reliability in extreme environments. The innovative design simplifies the entire process, from selection to easy and quick, tool-free installation. The perfect solution for every application.</p>
------------------	--

Ordering

Minimum Order Quantity	10 piece
Customs Tariff Number	8536901000

Popular Downloads

Data Sheet, Technical Information	1SFC151007C02_
Instructions and Manuals	1SFC151011M0201

Dimensions

Product Net Width	0.02 m
Product Net Height	0.044 m
Product Net Depth / Length	0.028 m
Product Net Weight	0.026 kg

Technical

Ambient Air Temperature	Operation -25 ... +70 °C Storage -40 ... +85 °C
Illumination	Non-illuminated
Function	Without holder
Mounting Type	Front mounting
Number of Auxiliary Contacts NC	1
Number of Auxiliary Contacts NO	1
Degree of Protection	Terminals IP20
Pollution Degree	3
Rated Insulation Voltage (U _i)	690 V
Rated Impulse Withstand Voltage (U _{imp})	6 kV
Rated Frequency (f)	50 / 60 Hz
Rated Operational Voltage	Maximum 690 V
Rated Operational Current DC-13 (I _e)	(24 V) 5 A (125 V) 0.55 A
Rated Operational Current AC-15 (I _e)	(230 V AC) 6 A
Power Loss	Maximum 5 W
Connecting Capacity	Flexible with Ferrule 1 x 0.75...2.5 mm ² Flexible with Ferrule 2 x 0.75...2.5 mm ² Flexible with Insulated Ferrule 1 x 0.75...2.5 mm ² Flexible with Insulated Ferrule 2 x 0.75...2.5 mm ² Flexible 1 x 0.75 ... 2.5 mm ² Flexible 2 x 0.75 ... 2.5 mm ² Solid 1 x 0.75...2.5 mm ² Solid 2 x 0.75...2.5 mm ²
Connection Type	Screw Clamp
Terminal Type	Screw Terminals
Tightening Torque	0.9 N·m
Wire Stripping Length	8 mm
Suitable For	MP1 MP2 MP3 MP4 MPD1 MPD2 MPD3 MPD4 MPD5 MPD11 MPD12 MPD13 MPD14 MPD15 MPD16 MPM1 MPM2 KP6 MPET3

MPEP3
MPEK3
MPET4
MPEP4
MPEK4
MPMT3
MPMT4
MPMP3
MPMP4
M2SS1
M2SS2
M2SS3
M2SS4
M2SS5
M2SS6
M3SS1
M3SS2
M3SS3
M3SS4
M3SS5
M3SS6
M3SS7
M3SS8
M3SSC1
M3SSC2
M3SSC3
M3SSC4
M3SSC5
M3SSC6
M3SSC7
M3SSC8
M2SSK1
M2SSK2
M2SSK3
M3SSK1
M3SSK2
M3SSK3
MTS1
MTS2
MTS3
MJS1
MJS2
MJS5
MJS6
MJS7
MJS8
MJS11
MJS12

Suitable for Product Class	Pilot Devices
----------------------------	---------------

Technical UL/CSA

Connecting Capacity	1x 18...14 AWG
UL/CSA	2x 18...14 AWG

Environmental

RoHS Status	Following EU Directive 2011/65/EU and Amendment 2015/863 July 22, 2019
RoHS Date	0635 4
RoHS Information	2CMT2015-005452
WEEE Category	5. Small Equipment (No External Dimension More Than 50 cm)
WEEE B2C / B2B	Business To Business

Certificates and Declarations (Document Number)

CB Certificate	SEMKO_SE30016M2
CQC Certificate	CQC2005010304154103

cULus Certificate	UL-E76003-20140513
Declaration of Conformity - CCC	2020980305001528
Declaration of Conformity - CE	2CMT2015-005452
DNV GL Certificate	E-14107
EAC Certificate	RU C-CN.ME77.B.01927
Environmental Information	1SAC200074H0001
Instructions and Manuals	1SFC151011M0201
RoHS Information	2CMT2015-005452

Container Information

Package Level 1 Units	bag 10 piece
Package Level 1 Width	0.11 m
Package Level 1 Depth / Length	0.15 m
Package Level 1 Height	0.02 m
Package Level 1 Gross Weight	0.26 kg
Package Level 1 EAN	7320500338452

Classifications

Object Classification Code	S
ETIM 6	EC000041 - Auxiliary contact block
ETIM 7	EC000041 - Auxiliary contact block
ETIM 8	EC000041 - Auxiliary contact block
eClass	V11.0 : 27371302
UNSPSC	39121500

Categories

Low Voltage Products and Systems → Control Products → Pilot Devices → Modular Plastic Range

