

PROTECTION AND CONNECTION, NOVEMBER 15, 2018

# Product life cycle announcement

## Lamp Block

**Subject:** Lamp block life cycle change

### Introduction:

In accordance with the ABB global strategy, the transformer blocks for pilot lights, transformer blocks for illuminated operators, lamp blocks, filament bulbs, and contact block/lamp block combinations will enter the obsolete phase of their life cycle on January 1st, 2019. These products are replaced directly with the ABB integrated LED blocks. Any modular assembled pilot device offerings with any of the combinations listed above will need to be transitioned to the new integrated LED version.

### Products:

Affected Legacy Products:



Description	Bulb suffix		Catalog number	Weight oz.	
	LED	Filament			
<b>Transformer blocks for pilot lights</b>					
For 6 or 24 V Filament bulb and 24 V LED. Max 1.2 W Filament bulb lamp block included in the transformer, BA 9s base					
<b>Primary voltage</b>	<b>Secondary voltage</b>				
110-127 V AC	6 V AC	-	T2	KTR1-1001	3.4
220-250 V AC	6 V AC	-	T2	KTR1-1002	3.4
380-420 V AC	6 V AC	-	T3	KTR1-1003	3.4
440-480 V AC	6 V AC	-	T4	KTR1-1004	3.4
500-600 V AC	6 V AC	-	T5	KTR1-1005	3.4
110-127 V AC	24 V AC <sup>1)</sup>	T1	T6	KTR1-1011	3.4
220-250 V AC	24 V AC <sup>1)</sup>	T2	T7	KTR1-1012	3.4
380-420 V AC	24 V AC <sup>1)</sup>	T3	T8	KTR1-1013	3.4
440-480 V AC	24 V AC <sup>1)</sup>	T4	T9	KTR1-1014	3.4



<b>Transformer blocks for illuminated operators - Intended to supply 1.2W filament bulb mounted in lamp block MCB-J only</b>				
110-127 V AC	6 V AC	- T2	KTR1-2001	3.4
220-250 V AC	6 V AC	- T2	KTR1-2002	3.4
380-420 V AC	6 V AC	- T3	KTR1-2003	3.4
440-480 V AC	6 V AC	- T4	KTR1-2004	3.4
500-600 V AC	6 V AC	- T5	KTR1-2005	3.4
110-127 V AC	24 V AC <sup>1)</sup>	T1 T6	KTR1-2011	3.4
220-250 V AC	24 V AC <sup>1)</sup>	T2 T7	KTR1-2012	3.4
380-420 V AC	24 V AC <sup>1)</sup>	T3 T8	KTR1-2013	3.4
440-480 V AC	24 V AC <sup>1)</sup>	T4 T9	KTR1-2014	3.4

Affected Legacy products (cont.):



Lamp block

## Single lamp blocks for front mounting, BA 9s base

Description	Catalog number	Weight oz.
 230 V, 2 W X1 X2	MLB-1	0.53
 115 V X1 X2	MLB-2	0.60
 230 V X1 X2	MLB-3	0.71
 115 V X1 X2	MLB-4	0.60
 LED X1 X2	MLB-8	0.53

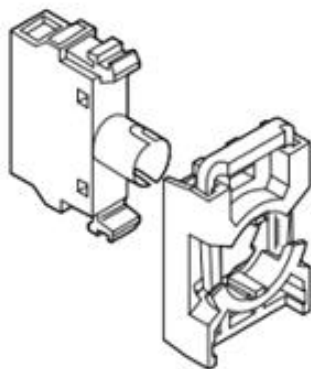
NOTE: Package order quantities will apply.



Filament bulbs

## Filament bulbs BA 9s base

Rated voltage V m AC/DC	Rated current A	Rated output W	Service life h	Luminance mod	Catalog number	Weight oz.
6	200	1.2	10 000	350	5911 086-11	0.071
12	100	1.2	10 000	203	5911 086-12	0.071
24	50	1.2	10 000	280	5911 086-13	0.071
30	40	1.2	10 000	250	5911 086-4	0.071
48	42	2	6 000	500	5911 086-5	0.071
60	20	1.2	5 000	190	5911 086-14	0.071
110	18	2	7 500	250	5911 086-7	0.071
130	15	2	7 500	120	5911 086-15	0.071



Lamp block + holder

Lamp blocks with holder<sup>®</sup>

## Supply voltage

## Catalog number

For max. 2 W, 230 V AC and DC  
filament bulb or LED

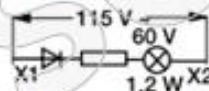
MCBH-001

$$\frac{230 \text{ V, 2 W}}{X1 \quad X2}$$

115 V AC supply voltage.

For 60 V filament bulb  
max. 1.2 W

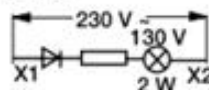
MCBH-002



230 V AC supply voltage.

For 130 V filament bulb  
max. 2 W

MCBH-003



Replacement products:



LED block with built in leakage current protection

Description	Rated Current mA	Wavelength nm	Luminance mcd	Catalog number	Weight oz.
<b>LED-blocks</b>					
Lamp block with one diode chip integrated into lamp block. Choose the same color for the LED and the lamp cap or else use a clear cap.					
<b>Rated voltage 12 V, DC</b>					
Red	12.0	620	320	MLBL-00R	0.42
Green	9.3	520	1500	MLBL-00G	0.42
Yellow	12.0	588	380	MLBL-00Y	0.42
Blue	9.5	468	450	MLBL-00L	0.42
White	9.3	<sup>2)</sup>	600	MLBL-00W	0.42
<b>Rated voltage 24 V, AC/DC</b>					
Red	9.9	620	250	MLBL-01R	0.42
Green	9.2	520	1500	MLBL-01G	0.42
Yellow	9.9	588	250	MLBL-01Y	0.42
Blue	9.3	468	450	MLBL-01L	0.42
White	9.2	<sup>2)</sup>	600	MLBL-01W	0.42
<b>Rated voltage 48 V, AC/DC</b>					
Red	10.0	620	260	MLBL-02R	0.42
Green	9.7	520	1500	MLBL-02G	0.42
Yellow	10.0	588	300	MLBL-02Y	0.42
Blue	9.7	468	450	MLBL-02L	0.42
White	9.7	<sup>1)</sup>	600	MLBL-02W	0.42
<b>Rated voltage 60 V, AC/DC</b>					
Red	13.0	620	350	MLBL-03R	0.42
Green	12.7	520	2000	MLBL-03G	0.42
Yellow	13.0	588	400	MLBL-03Y	0.42
Blue	12.7	468	550	MLBL-03L	0.42
White	12.7	<sup>1)</sup>	750	MLBL-03W	0.42
<b>Rated voltage 110-130 V, AC</b>					
Red	8.6	620	200	MLBL-04R	0.42
Green	8.5	520	1200	MLBL-04G	0.42
Yellow	8.6	588	250	MLBL-04Y	0.42
Blue	7.0	468	400	MLBL-04L	0.42
White	7.0	<sup>1)</sup>	500	MLBL-04W	0.42
<b>Rated voltage 110-130 V, DC</b>					
Red	9.9	620	250	MLBL-05R	0.42
Green	9.8	520	1500	MLBL-05G	0.42
Yellow	9.9	588	300	MLBL-05Y	0.42
Blue	9.8	468	450	MLBL-05L	0.42
White	9.8	<sup>1)</sup>	600	MLBL-05W	0.42
<b>Rated voltage 220 V, DC</b>					
Red	8.0	620	180	MLBL-06R	0.42
Green	8.0	520	110	MLBL-06G	0.42
Yellow	8.0	588	200	MLBL-06Y	0.42
Blue	8.0	468	450	MLBL-06L	0.42
White	8.0	<sup>1)</sup>	600	MLBL-06W	0.42
<b>Rated voltage 230 V, AC</b>					
Red	9.5	620	250	MLBL-07R	0.42
Green	9.4	520	1500	MLBL-07G	0.42
Yellow	9.5	588	300	MLBL-07Y	0.42
Blue	8.2	468	450	MLBL-07L	0.42
White	8.2	<sup>1)</sup>	600	MLBL-07W	0.42

Note: Care should be taken for DC applications and must be correctly connected.

## Replacement products (cont.):



LED block with built in leakage current protection

Description	Rated Current mA	Wavelength nm	Luminance mcd	Catalog number	Weight oz.
-------------	------------------	---------------	---------------	----------------	------------

**LED blocks, cont.**

Lamp block with one diode chip integrated into lamp block. Choose the same color for the LED and the lamp cap or else use a clear cap.

**Rated voltage 380 V, AC**

Red	10.2	620	250	MLBL-08R	0.42
Green	10.2	520	1500	MLBL-08G	0.42
Yellow	10.2	582	300	MLBL-08Y	0.42
Blue	9.1	468	450	MLBL-08L	0.42
White	9.1	1)	600	MLBL-08W	0.42

**Rated voltage 415 V, AC**

Red	11.2	620	280	MLBL-09R	0.42
Green	11.2	520	1800	MLBL-09G	0.42
Yellow	11.2	588	350	MLBL-09Y	0.42
Blue	9.9	468	500	MLBL-09L	0.42
White	9.9	1)	650	MLBL-09W	0.42

**Life Cycle Changes:**

Limited	Obsolete	Authorized Returns
Current – 12/31/18	01/01/19	03/31/19

**SUPPORT AVAILABILITY IN LIMITED PHASE:**

- Reduction in stock levels and SKUs
- No further product enhancements/development
- Limited offering and availability of all product variations is not guaranteed
- Last time buys should be placed before December 31<sup>st</sup>, 2018

**SUPPORT AVAILABILITY IN OBSOLETE PHASE:**

- Full obsolescence January 1<sup>st</sup>, 2019
- Limited manufacturing of the product
- All items coded as OBS; any remaining stock will be available for sale
- Limited technical and after sales support

**Inventory:**

Inventory levels will be actively managed to reduce and eliminate the stocking levels and stocked materials. Other Inventory (OI) requests will not be accepted moving forward.

**Pricing:**

SPA's will no longer be valid/offered for these products after March 1<sup>st</sup>, 2019.

**Transition tools:**

Pilot Devices: Assembled Modular Range 22mm & 30mm Brochure

<https://search.abb.com/library/Download.aspx?DocumentID=1SXU150112B0201&LanguageCode=en&DocumentPartId=&Action=Launch>

BU EPPC life cycle management

<http://www.abb.com/cawp/seitp202/1b1dcd473883a38dc1258221004a8112.aspx>

BU EPPC Technical Support (for cross-reference support)

[eppc.support@us.abb.com](mailto:eppc.support@us.abb.com)

Cross Reference Guide

(Attached to this document)

**Product Returns:**

During the limited phase, the ABB return policy will be enforced. Any requested returns after product obsolescence will only be accepted with approval of DSM and PMD for a grace period of 3 months from date of obsolescence.

**Exception Policy:**

Any requests for exception to the policy will be formally submitted using Obsolescence Exception Form. In this form, requestor must clearly state business case, rationale, and proposed transition plan. Exceptions will be approved by the DSM and PMD responsible.

**Sales Notice:**

It is the responsibility of the sales team to inform affected customers of the life cycle change. An external communication letter will be provided to support distribution of information.

Please direct questions to the undersigned with product responsibility.

**Berea Janzen**

**Product Marketing**

**Protection and Connection**

**Electronic Products & Relays**

**Email:** [berea.janzen@us.abb.com](mailto:berea.janzen@us.abb.com)

## Cross Reference Guide

Catalog #	Replacement catalog #	Notes
5911 086-11	N/A	Built into integrated LED
5911 086-12	N/A	Built into integrated LED
5911-086-13	N/A	Built into integrated LED
5911 086-4	N/A	Built into integrated LED
5911 086-5	N/A	Built into integrated LED
5911 086-14	N/A	Built into integrated LED
5911 086-7	N/A	Built into integrated LED
5911 086-15	N/A	Built into integrated LED
KTR1-1001	N/A	Built into integrated LED
KTR1-1002	N/A	Built into integrated LED
KTR1-1003	N/A	Built into integrated LED
KTR1-1004	N/A	Built into integrated LED
KTR1-1005	N/A	Built into integrated LED
KTR1-1011	N/A	Built into integrated LED
KTR1-1012	N/A	Built into integrated LED
KTR1-1013	N/A	Built into integrated LED
KTR1-1014	N/A	Built into integrated LED
KTR1-2001	N/A	Built into integrated LED
KTR1-2002	N/A	Built into integrated LED
KTR1-2003	N/A	Built into integrated LED
KTR1-2004	N/A	Built into integrated LED
KTR1-2005	N/A	Built into integrated LED
KTR1-2011	N/A	Built into integrated LED
KTR1-2012	N/A	Built into integrated LED
KTR1-2013	N/A	Built into integrated LED
KTR1-2014	N/A	Built into integrated LED
MLB-1	N/A	Built into integrated LED
MLB-1B	N/A	Built into integrated LED

MLB-2	N/A	Built into integrated LED
MLB-3	N/A	Built into integrated LED
MLB-4	N/A	Built into integrated LED
MLB-5	N/A	Built into integrated LED
MLB-8	N/A	Built into integrated LED
MP1-42G10	MP1-47G10**	Only has lamp block, no bulb. Replacement needs LED bulb choice
MP1-42G10F8	MP1-47G10L8	
MP1-42G10L8	MP1-47G10L8	
MP1-42G20L8	MP1-47G20L8	
MP1-42GL8	MP1-47GL8	
MP1-42L10	MP1-47L10**	Only has lamp block, no bulb. Replacement needs LED bulb choice
MP1-42L10L8	MP1-47L10L8	
MP1-42R01F8	MP1-47R01L8	
MP1-42R10F8	MP1-47R10L8	
MP1-42R10L1	MP1-47R10L1	
MP1-42R10L8	MP1-47R10L8	
MP1-42RL8	MP1-47RL8	
MP1-42W10L8	MP1-47W10L8	
MP1-42Y10	MP1-47Y10**	Only has lamp block, no bulb. Replacement needs LED bulb choice
MP1-42Y10F8	MP1-47Y10L8	
MP1-42Y10L8	MP1-47Y10L8	
MP1-42Y11L8	MP1-47Y11L8	
MP1-42YL8	MP1-47YL8	
MP1-62G11L8	MP1-67G11L8	
MP1-62L10L8	MP1-67L10L8	
MP1-62RF8	MP1-67RL8	
MP1-66G10L8	MP1-67G10L8	
MP1-66R10L8	MP1-67R10L8	

MP1-66Y10L8	MP1-67Y10L8	
MP1-KLFPT1W	MP1-KLFPT1W	This PN stays the same, but we will replace the lamp block with the integrated LED
MP1-KLFPTL13G	MP1-KLFPTL13G	This PN stays the same, but we will replace the lamp block with the integrated LED
MP1-KLFPTL13R	MP1-KLFPTL13R	This PN stays the same, but we will replace the lamp block with the integrated LED
MP1-KLFPTL1C	MP1-KLFPTL1C	This PN stays the same, but we will replace the lamp block with the integrated LED
MP1-KLFPTL1G	MP1-KLFPTL1G	This PN stays the same, but we will replace the lamp block with the integrated LED
MP1-KLFPTL1L	MP1-KLFPTL1L	This PN stays the same, but we will replace the lamp block with the integrated LED
MP1-KLFPTL1R	MP1-KLFPTL1R	This PN stays the same, but we will replace the lamp block with the integrated LED
MP1-KLFPTL1W	MP1-KLFPTL1W	This PN stays the same, but we will replace the lamp block with the integrated LED
MP1-KLFPTL1Y	MP1-KLFPTL1Y	This PN stays the same, but we will replace the lamp block with the integrated LED
MP1-KLFPTL8G	MP1-KLFPTL8G	This PN stays the same, but we will replace the lamp block with the integrated LED
MP1-KLFPTL8R	MP1-KLFPTL8R	This PN stays the same, but we will replace the lamp block with the integrated LED
MP1-KLFPTL8W	MP1-KLFPTL8W	This PN stays the same, but we will replace the lamp block with the integrated LED
MP1-KLFPTL8Y	MP1-KLFPTL8Y	This PN stays the same, but we will replace the lamp block with the integrated LED
MP1-KLPTG	MP1-KLPTG	This PN stays the same, but we will replace the lamp block with the integrated LED
MP1-KLPTR	MP1-KLPTR	This PN stays the same, but we will replace the lamp block with the integrated LED
MP1-KLPTY	MP1-KLPTY	This PN stays the same, but we will replace the lamp block with the integrated LED
MP1-MLFPT1R	MP1-MLFPTL1R -AC MP1-MLFPTL13R -DC	Does the cust. Need AC or DC?
MP1-MLFPT1W	MP1-MLFPTL1W -AC MP1-MLFPTL13W -DC	Does the cust. Need AC or DC?
MP1-MLFPT1Y	MP1-MLFPTL1Y -AC MP1-MLFPTL13Y -DC	Does the cust. Need AC or DC?



MP1-MLFPT8G	MP1-MLFPTL8G	
MP1-MLFPT8R	MP1-MLFPTL8R	
MP1-MLFPT8W	MP1-MLFPTL8W	
MP1-MLFPTL1G	MP1-MLFPTL1G	This PN stays the same, but we will replace the lamp block with the integrated LED
MP1-MLFPTL1L	MP1-MLFPTL1L	This PN stays the same, but we will replace the lamp block with the integrated LED
MP1-MLFPTL1R	MP1-MLFPTL1R	This PN stays the same, but we will replace the lamp block with the integrated LED
MP1-MLFPTL2G	MP1-MLFPTL2G	This PN stays the same, but we will replace the lamp block with the integrated LED
MP1-MLFPTL2R	MP1-MLFPTL2R	This PN stays the same, but we will replace the lamp block with the integrated LED
MP1-MLFPTL8G	MP1-MLFPTL8G	This PN stays the same, but we will replace the lamp block with the integrated LED
MP1-MLFPTL8L	MP1-MLFPTL8L	This PN stays the same, but we will replace the lamp block with the integrated LED
MP1-MLFPTL8R	MP1-MLFPTL8R	This PN stays the same, but we will replace the lamp block with the integrated LED
MP1-MLFPTL8Y	MP1-MLFPTL8Y	This PN stays the same, but we will replace the lamp block with the integrated LED
MP2-42G10L1	MP2-47G10L1	
MP3-42R11	MP3-47R11	Only has lamp block, no bulb. Replacement needs bulb choice.
MP3-42R11L8	MP3-47R11L8	
MP3-42RF8	MP3-47RL8	
MP3-42W10L8	MP3-47W10L8	
MP3-KLFPTL1G	MP3-KLFPTL1G	This PN stays the same, but we will replace the lamp block with the integrated LED
MP3-KLFPTL1R	MP3-KLFPTL1R	This PN stays the same, but we will replace the lamp block with the integrated LED
MP3-KLFPTL1Y	MP3-KLFPTL1Y	This PN stays the same, but we will replace the lamp block with the integrated LED
MP3-MLTPTL1G	MP3-MLTPTL1G	This PN stays the same, but we will replace the lamp block with the integrated LED
MP3-MLTPTL1R	MP3-MLTPTL1R	This PN stays the same, but we will replace the lamp block with the integrated LED

MPD15-22Y11L1	MPD15-27Y11L1	
MPD2-22C11L8	MPD2-27C11L8	
MPM1-62R02GL7	MPM1-67R02GL7	
MPMT3-22R02L8	MPMT3-27R02L8	
MPMT3-22R12L8	MPMT3-27R12L8	
MPMT3-22RL8	MPMT3-27RL8	
MCBH-001	MCBH-00 + Integrated LED	
MCBH-002	MCBH-00 + Integrated LED	
MCBH-003	MCBH-00 + Integrated LED	
MCBH-011	MCBH-01 + Integrated LED	
MCBH-101	MCBH-10 + Integrated LED	
MCBH-111	MCBH-11 + Integrated LED	
MCBH-021	MCBH-02 + Integrated LED	
MCBH-201	MCBH-20 + Integrated LED	
G1MP1-42GF8	G1MP1-47GL8	
G1MP3-42L10L8	G1MP3-47L10L8	
G1MP3-KLFPTL1R	G1MP3-KLFPTL1R	This PN stays the same, but we will replace the lamp block with the integrated LED
G2MP1-MLFPT8R	G2MP1-MLFPTL8R	
G2MP1-MLFPTL1L	G2MP1-MLFPTL1L	
G2MP1-MLFPTL1R	G2MP1-MLFPTL1R	
G2MP1-MLFPTL1Y	G2MP1-MLFPTL1Y	
G2MP3-MLFPTL8R	G2MP3-MLFPTL8R	
M2SS1-42G10	M2SS1-47G10**	Only has lamp block, no bulb. Replacement needs bulb choice.
M2SS2-42G10L8	M2SS2-47G10L8	
M2SS2-62G20L8	M2SS2-67G20L8	
MP1-42C10L8	MP1-47C10L8	
MP1-MLFPT8Y	MP1-MLFPTL8Y	