

Miniature Fittings Stainless Steel 316 Series MS

For use in corrosive environments
Stainless steel

Compact piping space

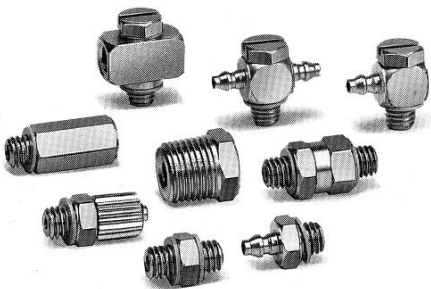
Tube has a large retaining force. Hose nipple assures easy installation and removal.

Line up various types

Possible for special tubing in the same direction. Accepts many styles of plastic tubing

Hose nipple and hose elbow

Accepts nylon, soft nylon, and polyurethane tubing.



Hose nipple

Barb

Configuration for easy insertion into the tube
Holds the tube tightly.

Body

Stainless steel 316

Gasket

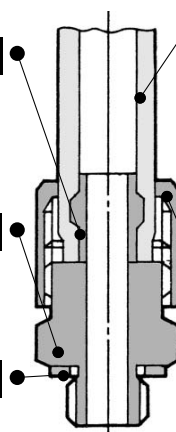
Low tightening torque
Tight seal

Tube

Possible for combination use of nylon tubing and polyurethane tubing.

Cap nut

Certainly hold the tube by manual clamping
Easy removal of tube by loosening
Stainless steel 316



Barb fitting

Barb

Configuration for easy insertion into the tube
Holds the tube tightly.

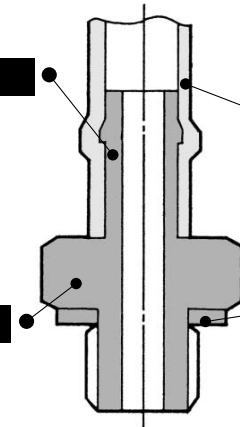
Body

Stainless steel 316

Tube

Gasket

Low tightening torque
Tight seal



Specifications

Applicable tubing material	Nylon	Soft nylon		Polyurethane
Applicable tubing diameter	ø4, ø2.5 ø6, ø4	ø3.18, ø2.18	ø4, ø2.5 ø6, ø4	ø3.18, ø2, ø4 ø2.5, ø6, ø4
Maximum operating pressure	1.5 MPa	1.0 MPa		0.8 MPa
Connection size	M5 (JIS B 0209 Class 2 metric coarse thread)			
Material	Body	Stainless steel 316		
	Gasket	PVC, Nylon 66, GF30%		

K□

M□

H□





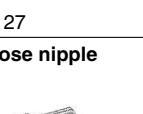

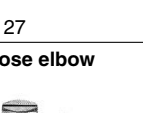












D□

MS

T□

VMG

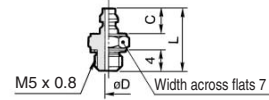
Series MS

Model			
Model	Description	Application	Note
MS-5AU-3	Barb fitting for soft tube 	For soft nylon tube	ø3.18, ø2.18 x M5
		For polyurethane tube	ø3.18, ø2 x M5
MS-5AU-4		For soft nylon and polyurethane tube	ø4, ø2.5 x M5
MS-5AU-6	 P. 27		ø6, ø4 x M5
MS-5ALHU-3	Barb elbow for soft tube 	For soft nylon tube	ø3.18, ø2.18 x M5
		For polyurethane tube	ø3.18, ø2 x M5
MS-5ALHU-4		For soft nylon and polyurethane tube	ø4, ø2.5 x M5
MS-5ALHU-6	 P. 27		ø6, ø4 x M5
MS-5H-4	Hose nipple 	For nylon, soft nylon, and polyurethane tube	ø4, ø2.5 x M5
MS-5H-6	 P. 27		ø6, ø4 x M5
MS-5HLH-4	Hose elbow 	<ul style="list-style-type: none"> For nylon, soft nylon, and polyurethane tube Body rotates at 360° around the stud axis 	ø4, ø2.5 x M5
MS-5HLH-6			ø6, ø4 x M5
MS-5G1	Gasket  P. 28	To seal M5 thread	Material: PVC
MS-5UL	Universal elbow  P. 27	Body rotates at 360° around the stud axis	M5 female x M5 male
MS-5UT	Universal tee  P. 27	Body rotates at 360° around the stud axis	M5 female x M5 female x M5 male
MS-5B	Push  P. 28	For reducing Rc 1/8 female to M5 female	R 1/8 x M5 female
MS-5P	Plug  P. 28	Use to plug unused M5 port.	
MS-5J	Extension fitting  P. 28	Solid piece moves fitting up from work piece	M5 male x M5 female
MS-5N	Nipple  P. 28	Fitting to workpiece and fitting to fitting connection	M5 male x M5 male
MS-5UN	Universal nipple  P. 28	Body rotates at 360° around the stud axis	M5 male x M5 male PAT
MS-5ATHU-3	Barb tee for soft tube 	For soft nylon tube	ø3.18, ø2.18 x M5
		For polyurethane tube	ø3.18, ø2 x M5
MS-5ATHU-4		For soft nylon and polyurethane tube	ø4, ø2.5 x M5
MS-5ATHU-6			ø6, ø4 x M5
M-5GH	Gasket (H)  P. 28	MS-5ALHU-6 MS-5HLH-4 MS-5HLH-6 MS-5ATHU-6 only	Material: Nylon 66 GF 30%

Barb Fitting for Soft Tube: MS-5AU-3/4/6



Model	C	øD	L	Effective area (mm ²)	Weight (g)
MS-5AU-3	4.5	1.6	11.5	1.7	1.4
MS-5AU-4	5	1.8	12	2.1	1.5
MS-5AU-6	7	2.5	14	4.0	1.7

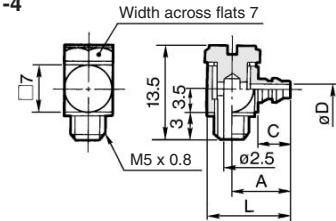


Barb Elbow for Soft Nylon: MS-5ALHU-3/4/6

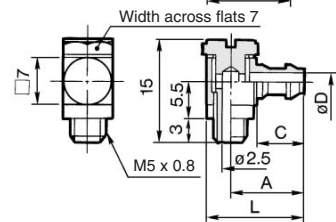


Model	A	C	øD	L	Effective area (mm ²)	Weight (g)
MS-5ALHU-3	8	4.5	1.6	11.8	1.1	3.0
MS-5ALHU-4	8.8	5.0	1.8	12.6	1.4	3.1
MS-5ALHU-6	10.8	7.0	2.5	14.6	2.4	3.7

MS-5ALHU-3, -4



MS-5ALHU-6

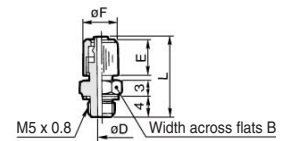


- K
- M
- H
- D
- MS
- T
- VMG

Hose Nipple: MS-5H-4/6



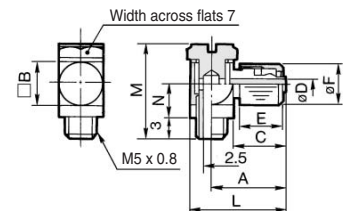
Model	B	øD	L	E	øF	Effective area (mm ²)	Weight (g)
MS-5H-4	7	1.8	15.5	7	6.5	2.1	2.5
MS-5H-6	8	2.5	16.5	8	8.5	4.0	3.7



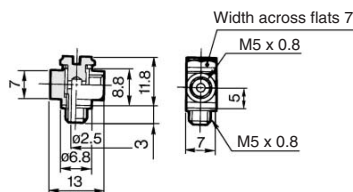
Hose Elbow: MS-5HLH-4/6



Model	A	IB	C	øD	E	øF	L	M	N	Effective area (mm ²)	Weight (g)
MS-5HLH-4	12	7	8.5	1.8	7	6.5	15.8	15	5.5	1.4	4.2
MS-5HLH-6	13.5	8	9.5	2.5	8	8.5	17.8	16	6	2.5	6.2

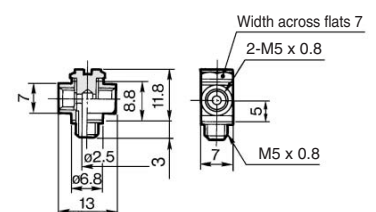


Universal Elbow: MS-5UL



Effective area: 2.4 mm²
Weight: 4.5 g

Universal Tee: MS-5UT



Effective area: 2.4 mm²
Weight: 4.5 g