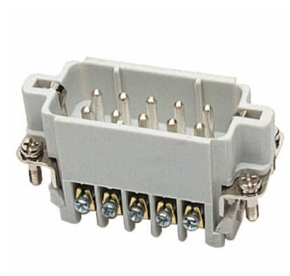




PRODUCT-DETAILS

# MS210A

## MA SCR TERM INSERT A SERIES 10CNT



General Information	
Extended Product Type	MS210A
Product ID	7TAA080360R0006
EAN	5415022193091
Catalog Description	MA SCR TERM INSERT A SERIES 10CNT
Long Description	Male screw terminal insert. For use with A series, 10 contacts with ground.

Ordering	
EAN	5415022193091
UPC	786210791203
Country of Origin	Germany
Selling Unit of Measure	each

Container Information	
Package Level 1 Units	10 EA
Package Level 1 Width	50.8 mm

	2 in
Package Level 1 Height	144.78 mm
	5.7 in
Package Level 1 Depth / Length	185.42 mm
	7.3 in

Additional Information

Application	For use with A series
Brand / Label	Pos-E-Kon
Current Rating	10 A
Effective Date	19850715
Material	Glass-filled Thermoplastic
Product Name	"ELECTRICAL CONNECTORS, RACK AN"
Product Type	Terminal Inserts-Male
Standards	CSA 70013
Voltage Rating	600 VA °C

Certificates and Declarations

Data Sheet, Technical Information	MS210A
-----------------------------------	--------

External Classifications and Standards

ETIM 7	EC000438 - Contact insert for rectangular connectors
ETIM 8	EC000438 - Contact insert for rectangular connectors
UNSPSC	39121410
WEEE Category	Product Not in WEEE Scope
IDEA Granular Category Code (IGCC)	4550 >> Component terminal block

Categories

Low Voltage Products and Systems → Installation Products → Wire Management and Connectivity → Pin & Sleeve Connectors

