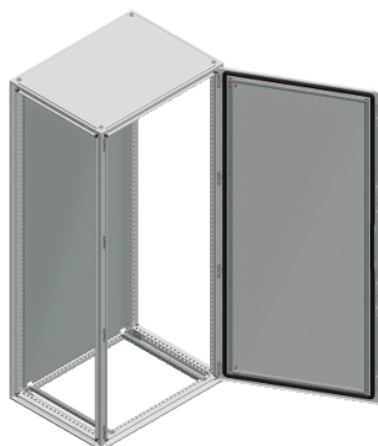


Product availability: Non-Stock - Not normally stocked in distribution facility



Main

Range	Spacial
Extended range	Spacial SF
Application	Multi-purpose
Product or component type	Suitable enclosure
Enclosure nominal height	78.74 in (2000 mm)
Enclosure nominal width	39.37 in (1000 mm)
Enclosure nominal depth	19.69 in (500 mm)
Enclosure mounting	Floor-standing
Device composition	2 sliding rails 4 mounting plate bracket 1 structure 1 rear panel 1 roof 2 door 1 locking system with handle 1 blocking system left door

Complementary

Structure type	Panels and doors built into the structure Vertical uprights joined with top and bottom frames Formed from a single section Perforated structure with a pitch of 25 mm
Door type	Plain front
Number of doors	Front face 2
Door opening side	Left 120 °) Right 120 °)
Lock type	4 points lock, handle with 5 mm double bar insert front right door
Mounting plate description	Without mounting plate
Type of gland plate	Without gland plate
Accessibility for operation	Front Rear Sides of enclosure
Removable parts	Door by screws hinge Mounting plate by screws mounting plate bracket Rear panel by screws Roof by screws Mounting plate bracket by screws Sliding rail by screws
Material	Frame galvanised steel Uprights galvanised steel Door sheet steel Panels sheet steel Hinge zamak Handle polyamide 6 with 30 % fibre glass
Surface finish	Epoxy-polyester powder
Color	Enclosure grey RAL 7035) Handle black RAL 9005)

The information provided in this documentation contains general descriptions and/or technical characteristics of the performance of the products contained herein. This documentation is not intended as a substitute for and is not to be used for determining suitability or reliability of these products for specific user applications. It is the duty of any such user or integrator to perform the appropriate and complete risk analysis, evaluation and testing of the products with respect to the relevant specific application or use thereof. Neither Schneider Electric Industries SAS nor any of its affiliates or subsidiaries shall be responsible or liable for misuse of the information contained herein.

Environment

Standards	IEC 62208
IP degree of protection	IP55 IEC 60529
IK degree of protection	IK10 IEC 62262

Ordering and shipping details

Category	80035 - ENCLOSURE SYSTEMS FLOOR MOUNT
Discount Schedule	ES1
GTIN	03606485118390
Package weight(Lbs)	123.76 kg (272.84 lb(US))
Returnability	No
Country of origin	ES

Offer Sustainability

Sustainable offer status	Green Premium product
REACH Regulation	REACH Declaration
EU RoHS Directive	Pro-active compliance (Product out of EU RoHS legal scope) EU RoHS Declaration
Mercury free	Yes
RoHS exemption information	Yes
China RoHS Regulation	China RoHS Declaration
Environmental Disclosure	Product Environmental Profile
Circularity Profile	No need of specific recycling operations

Contractual warranty

Warranty	18 months
----------	-----------