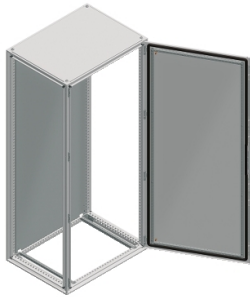


Product datasheet

Specifications



Spacial SF enclosure without mounting plate - assembled - 2000x400x800 mm

NSYSF20480

⚠ Discontinued on: May 1, 2024

⚠ To be discontinued

Main

Range	Spacial
Extended Range	Spacial SF
Application	Multi-purpose
Product Or Component Type	Suitable enclosure
Enclosure Nominal Height	2000 mm
Enclosure Nominal Width	400 mm
Enclosure Nominal Depth	800 mm
Enclosure Mounting	Floor-standing
Device Composition	1 roof 1 door 1 locking system with handle: door 1 structure 1 rear panel

Complementary

Structure Type	Formed from a single section Perforated structure with a pitch of 25 mm Panels and doors built into the structure Vertical uprights joined with top and bottom frames
Door Opening Side	Reversible (120 °)
Door Type	Plain front
Mounting Plate Description	Without mounting plate
Type Of Gland Plate	Without gland plate
Lock Type	4 points lock, handle with 5 mm double bar insert front door
Number Of Doors	Front: 1 door(s)
Accessibility For Operation	Sides of enclosure Rear Front
Removable Parts	Door by screws hinge Rear panel by screws Roof by screws Mounting plate bracket by screws Sliding rail by screws
Material	Frame: galvanised steel Uprights: galvanised steel Door: sheet steel Panels: sheet steel Hinge: zamak Handle: polyamide 6 with 30 % fibre glass

Price is "List Price" and may be subject to a trade discount – check with your local distributor or retailer for actual price.

Disclaimer: This documentation is not intended as a substitute for and is not to be used for determining suitability or reliability of these products for specific user applications

Surface Finish	Epoxy-polyester powder
Colour	Enclosure: grey (RAL 7035) Handle: black (RAL 9005)
Net Weight	79.5 kg

Environment

Standards	IEC 62208
Nema Degree Of Protection	NEMA 3R/12
Ip Degree Of Protection	IP55 conforming to IEC 60529
Ik Degree Of Protection	IK10 conforming to IEC 62262

Packing Units

Unit Type Of Package 1	PCE
Number Of Units In Package 1	1
Package 1 Height	44.5 cm
Package 1 Width	89.0 cm
Package 1 Length	213.0 cm
Package 1 Weight	72.0 kg
Unit Type Of Package 2	PAL
Number Of Units In Package 2	2
Package 2 Height	213.0 cm
Package 2 Width	85.0 cm
Package 2 Length	98.0 cm
Package 2 Weight	144.0 kg

Contractual warranty

Warranty	18 months
----------	-----------

Sustainability



Green Premium™ label is Schneider Electric’s commitment to delivering products with best-in-class environmental performance. Green Premium promises compliance with the latest regulations, transparency on environmental impacts, as well as circular and low-CO₂ products.

Guide to assessing product sustainability is a white paper that clarifies global eco-label standards and how to interpret environmental declarations.

[Learn more about Green Premium >](#)

[Guide to assess a product’s sustainability >](#)



Transparency RoHS/REACH

Well-being performance

 Mercury Free

 RoHS Exemption Information [Yes](#)

Certifications & Standards

Reach Regulation	REACH Declaration
Eu Rohs Directive	Pro-active compliance (Product out of EU RoHS legal scope)
China Rohs Regulation	China RoHS declaration Product out of China RoHS scope. Substance declaration for your information
Environmental Disclosure	Product Environmental Profile
Circularity Profile	No need of specific recycling operations