

# NJ/NX-series Machine Automation Controller Database Connection CPU Unit

NX701-1□20/NX102-□□20/NJ501-□□20/NJ101-□□20

Advanced direct access to database boosts manufacturing innovation

Information Control



Machine Control



# Advanced direct access to database boosts

Values required for information utilization

## Reliable

Send all data

## Rapid

Monitor machine behavior in synchronization with production cycle time

## Easy

Utilize data without any SQL knowledge

Upgraded to directly access databases and utilize production data more reliably, rapidly, and easily

### Existing features

- Spool function to send data efficiently
- Saving data and images together
- Data collection every millisecond
- No gateway computer needed. Pre-defined Function Blocks provided



### **NEW** New functions added to version 2.0 bring further innovation

- Stored Procedure Call
- Secure communications
- Batch Insert of data
- Automatic generation of tables from structures and vice versa

► For details, see page 4-5



# manufacturing innovation

## ✓ Supported database\*\*

- Microsoft SQL server
- Oracle Database
- IBM DB2            · MySQL
- PostgreSQL        · Firebird



### Database Connection CPU Unit

- ▶ No PC, special unit, or middleware needed
- ▶ Conforms to IEC 61131-3 standards

\*1. Databases supported by version 2.0 : SQL server, Oracle Database, MySQL, and PostgreSQL.

## New functionality makes direct access to database more powerful

Reliable · Easy

### Data check before the next step to produce traceable products

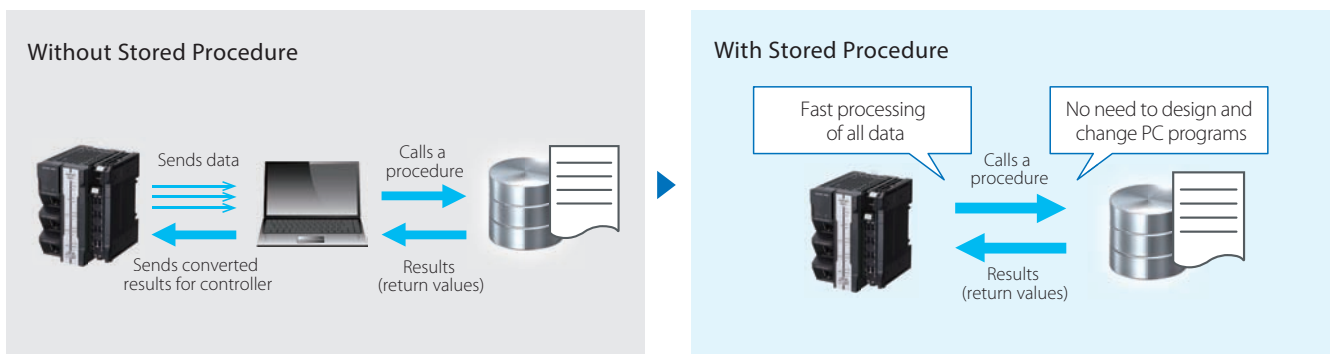
Stored Procedure enables complex processing to be carried out on powerful servers. This function performs all data check processing at once after each step, providing reliable traceability while maintaining productivity. No PC is required, which eliminates the need for software updates or virus protection maintenance.

### Stored Procedure

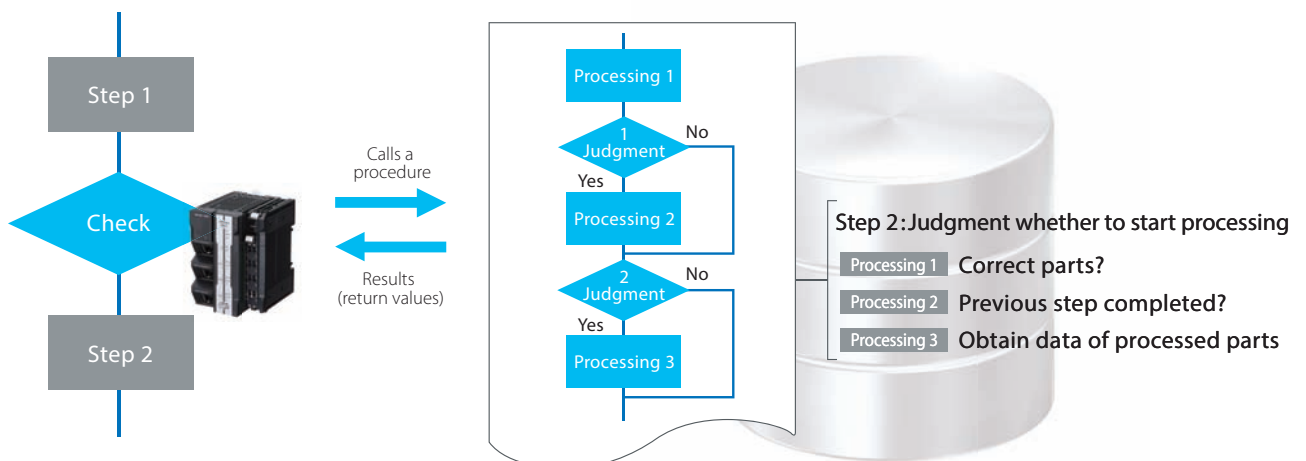
#### What is Stored Procedure?

Stored Procedure is one of the database functions. A group of SQL statements is stored in a database, enabling complex processing to be executed with one call.

The Stored Procedure Call function to call a stored procedure in a database from the controller has been added to version 2.0.



#### Usage example: Data check before process



Reliable

### Secure connection between FA and IT

Authentication based on server certificates and encrypted communications ensure safe connection between a database server and the CPU unit.

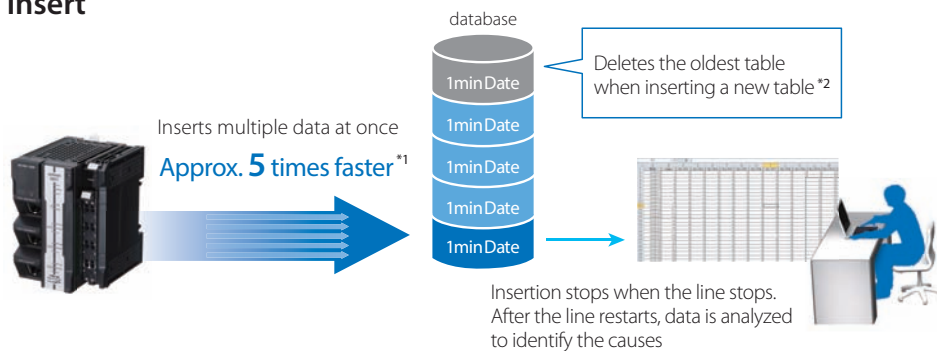


Rapid

### 5 times faster data collection than the previous method

Batch Insert can store various types of data for a long time, just like an event data recorder. This allows you to identify the causes of line stoppages by analyzing data collected every scan.

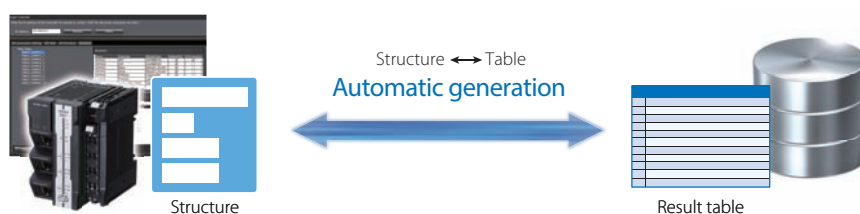
#### Batch Insert



Easy

### Automatic generation of tables from structures and vice versa

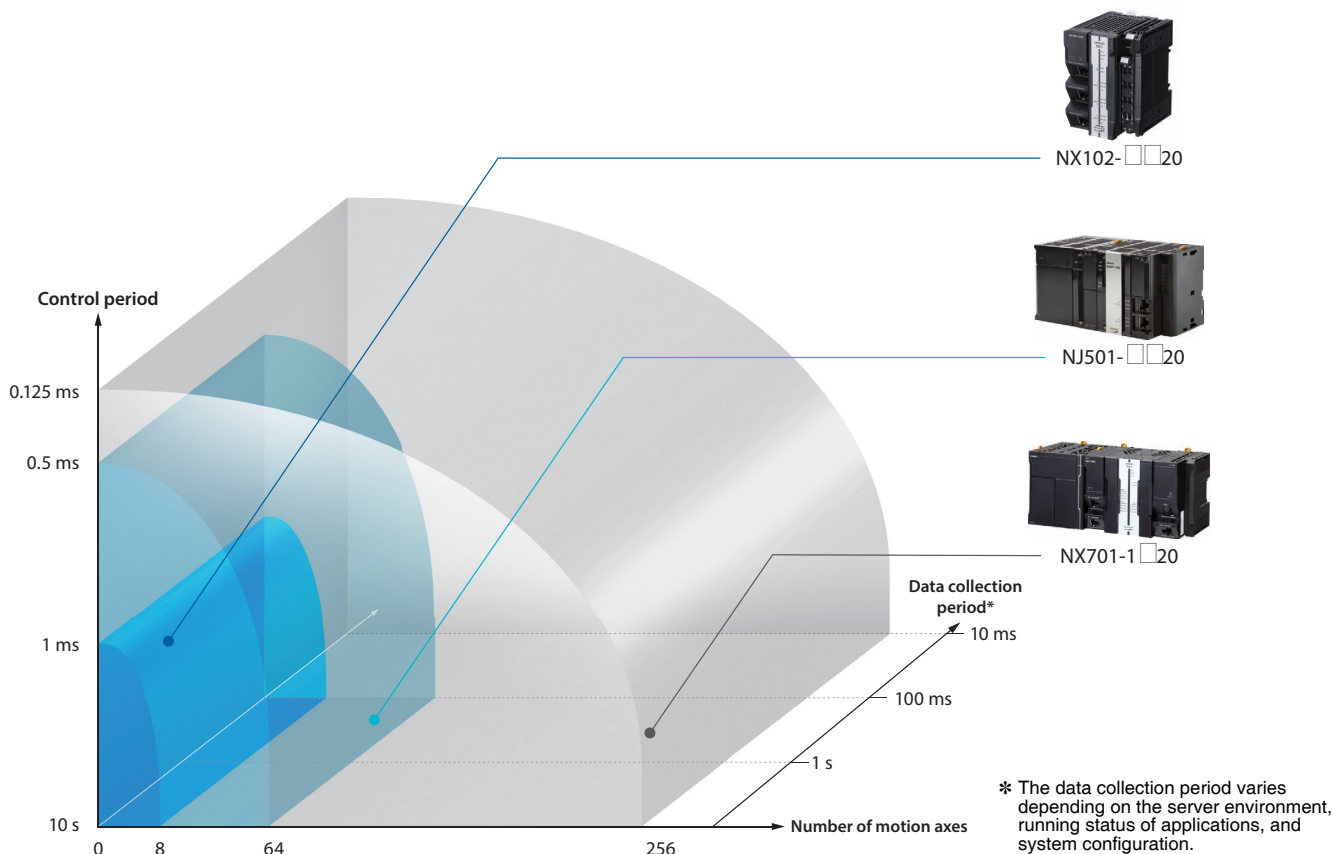
A database table can be automatically generated from a structure, and a structure can be automatically generated from a database table. Mapping time can be reduced.



Note. The database connection utility is required. Ask your Omron sales representative.

\*1. Compared with when multiple insertions are performed.  
\*2. A stored procedure is required to delete tables.

## Product lineup




## Ordering Information


### International Standards

- The standards are abbreviated as follows: U: UL, U1: UL (Class I Division 2 Products for Hazardous Locations), C: CSA, UC: cULus, UC1: cULus (Class I Division 2 Products for Hazardous Locations), CU: cUL, N: NK, L: Lloyd, and CE: EU Directives, RCM: Regulatory Compliance Mark, KC: KC Registration, and EAC: EAC mark.
- Contact your OMRON representative for further details and applicable conditions for these standards.



### NX701 CPU Units

Product name	Specifications			Power consumption	Model	Standards
	Program capacity	Memory capacity for variables	Number of motion axes			
 NX701 CPU Units	80 MB	4 MB: Retained during power interruption 256 MB: Not retained during power interruption	256	40 W (including SD Memory Card and End Cover)	NX701-1720	UC1, CE, RCM, KC
			128		NX701-1620	

### NX102 CPU Units

Product name	Specifications					Model	Standards
	Program capacity	Memory capacity for variables	Maximum number of used real axes				
				Number of motion axes	Single-axis position control axes		
 NX102 CPU Units	5 MB	1.5 MB: Retained during power interruption 32 MB: Not retained during power interruption	12	8	4	NX102-1220	UC1, N, L, CE, RCM, KC, EAC
			8	4	4	NX102-1120	
			6	2	4	NX102-1020	
			4	0	4	NX102-9020	

## NJ-series CPU Units

Product Name	Specifications				Current consumption (A)		Model	Standards
	I/O capacity / maximum Model Standards number of configuration Units (Expansion Racks)	Program capacity	Memory capacity for variables	Number of motion axes	5 VDC	24 VDC		
CPU Units 	2,560 points / 40 Units (3 Expansion Racks)	20 MB	2 MB: Retained during power interruption	64	1.90	-	NJ501-1520	UC1, N, L, CE, RCM, KC
			4 MB: Not retained during power interruption	32			NJ501-1420	
				16			NJ501-1320	
3 MB		0.5 MB: Retained during power interruption	2	NJ101-1020				
		2 MB: Not retained during power interruption	0	NJ101-9020				
Robot Integrated CPU Units 	20 MB	2 MB: Retained during power interruption 4 MB: Not retained during power interruption	64	NJ501-R520				
			32	NJ501-R420				
			16	NJ501-R320				

## Automation Software Sysmac Studio

Please purchase a DVD and required number of licenses the first time you purchase the Sysmac Studio. DVDs and licenses are available individually. Each model of licenses does not include any DVD.

Product name	Specifications	Number of licenses	Media	Model	Standards
<b>Sysmac Studio Standard Edition Ver.1.□□</b>	The Sysmac Studio is the software that provides an integrated environment for setting, programming, debugging and maintenance of machine automation controllers including the NJ/NX-series CPU Units, NY-series Industrial PC, EtherCAT Slave, and the HMI.  Sysmac Studio runs on the following OS. Windows 7(32-bit/64-bit version)/Windows 8(32-bit/64-bit version)/Windows 8.1(32-bit/64-bit version)/Windows 10(32-bit/64-bit version) *1  The Sysmac Studio Standard Edition DVD includes Support Software to set up EtherNet/IP Units, DeviceNet slaves, Serial Communications Units, and Support Software for creating screens on HMIs (CX-Designer). For details, refer to your OMRON website.	- (Media only)	Sysmac Studio (32 bit) DVD	<b>SYSMAC-SE200D</b>	-
		- (Media only)	Sysmac Studio (64 bit) DVD	<b>SYSMAC-SE200D-64</b>	-
		1 license *2	-	<b>SYSMAC-SE201L</b>	-

\*1. Model "SYSMAC-SE200D-64" runs on Windows 10 (64 bit).

\*2. Multi licenses are available for the Sysmac Studio (3, 10, 30, or 50 licenses).

## Accessories

The following accessories come with the CPU Unit.

Item	model	NX701-1□20	NX102-□□20	NJ□01-□□20
Battery	CJ1W-BAT01		-	CJ1W-BAT01
End Cover *	NX-END01		NX-END02	CJ1W-TER01
End Plate			-	PPF-M (2 pcs)
SD Memory Card (Flash Memory)	HMC-SD491		HMC-SD291	NJ501-□□20: HMC-SD491 NJ101-□□20: HMC-SD291

\* Necessary to be connected to the right end of the CPU Rack.

For details, refer to the data sheet of the Machine Automation Controller NX7 (Cat. No. P141), the data sheet of the Machine Automation Controller NX1 (Cat. No. P130), and the data sheet of the Machine Automation Controller NJ-series (Cat. No. P140).

Sysmac is a trademark or registered trademark of OMRON Corporation in Japan and other countries for OMRON factory automation products. Microsoft, Windows, Windows Vista and SQL Server are registered trademarks of Microsoft Corporation in the United States and other countries. Oracle and Oracle Database are trademarks or registered trademarks of Oracle Corporation and/or its affiliates in the United States and other countries. IBM and DB2 are trademarks or registered trademarks of International Business Machines Corp., registered in the United States and other countries. Other company names and product names in this document are the trademarks or registered trademarks of their respective companies.

Note: Do not use this document to operate the Unit.

**OMRON Corporation Industrial Automation Company**  
Kyoto, JAPAN

Contact: [www.ia.omron.com](http://www.ia.omron.com)

**Regional Headquarters**

**OMRON EUROPE B.V.**

Wegalaan 67-69, 2132 JD Hoofddorp  
The Netherlands  
Tel: (31)2356-81-300/Fax: (31)2356-81-388

**OMRON ELECTRONICS LLC**

2895 Greenspoint Parkway, Suite 200  
Hoffman Estates, IL 60169 U.S.A.  
Tel: (1) 847-843-7900/Fax: (1) 847-843-7787

**OMRON ASIA PACIFIC PTE. LTD.**

No. 438A Alexandra Road # 05-05/08 (Lobby 2),  
Alexandra Technopark,  
Singapore 119967  
Tel: (65) 6835-3011/Fax: (65) 6835-2711

**OMRON (CHINA) CO., LTD.**

Room 2211, Bank of China Tower,  
200 Yin Cheng Zhong Road,  
PuDong New Area, Shanghai, 200120, China  
Tel: (86) 21-5037-2222/Fax: (86) 21-5037-2200

**Authorized Distributor:**

© OMRON Corporation 2014-2020 All Rights Reserved.  
In the interest of product improvement,  
specifications are subject to change without notice.

**CSM\_11\_4**  
**Cat. No. P088-E1-15**

1220(1214)



# Mouser Electronics

Authorized Distributor

Click to View Pricing, Inventory, Delivery & Lifecycle Information:

Omron:

[NX701-1620](#) [NX701-1720](#)