

## Fuse monitors, carriers and mounting adapters

Disconnect  
switches  
Accessories



OFM\_

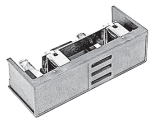
### Fuse monitors

For Use With	Rated Voltage	Weight (lbs)	Catalog number
OS30-1200	100-240	0.31	OFM240
	380-600	0.31	OFM600

Suitable for 1 or 3 phase circuits. Includes 1 N.O. and 1 N.C. auxiliary contacts and red & green LED lights for indication.

#### Crimp terminals for fuse monitor wires

For Use With	Crimp Terminal size (mm)	Includes	Catalog number
OS30-200	2.8-0.8	6 terminals	OFMZ2
OS400-1200	6.3-0.8		OFMZ4



Fuse carriers  
OESAZD\_

### Fuse carriers

Description	For Use on	Catalog number
CC fuse carrier (Qty. 1)	OS30FACC_	OESAZD48
J fuse carrier (Qty. 1)	OS30FAJ_	OESAZD28
Solid link carrier (Qty. 1)	OS30_	OESAZD55

### Shorting bars for fusible switches

Description	For Use On	AC thermal amp rating	AC rated voltage	Catalog number
Dummy Fuse	OS60	60	600	OESAZD54
Solid links: metal strap	OS100	100	600	OESA-ZS36
	OS200	400	600	OESA-ZK98

### DIN rail mounting kit

For Use With	Weight (lbs)	Catalog number
OS60-100G_	0.44	OSGZD1