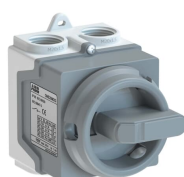


PRODUCT-DETAILS

ONE20M2G

ONE20M2G Enclosed Switch Disconnecter



General Information

Extended Product Type	ONE20M2G
Product ID	1SCA135532R1001
EAN	6417019641225
Catalog Description	ONE20M2G Enclosed Switch Disconnecter
Long Description	The plastic enclosed switch disconnecter, is well suited for commercial and residential use. There are 3 color alternatives available, red/yellow, dark grey, and white. Typical applications could be fans, pumps, kitchen appliances etc. The product withstand water and rain, acc. to class IP67, and is well suited for indoor and outdoor use. The plastic is UV protected. Two cable glands are included in the delivery. The terminals are easily available, thanks to the enclosure design and the removable switch. PE terminal included.

Ordering

Minimum Order Quantity	10 piece
Customs Tariff Number	85363030
Country of Origin	Finland (FI)

Popular Downloads

Data Sheet, Technical Information	1SCC340015C0201
Instructions and Manuals	1SCC390135M0204
Mechanical Drawings	ONE926584RM20.stp

Dimensions

Product Net Width	65 mm
Product Net Height	92 mm
Product Net Depth / Length	84 mm
Product Net Weight	0.11 kg

Technical

Rated Operational Current AC-22A (I_e)	(230 V) Single Phase 20 A
Rated Operational Current AC-23A (I_e)	(230 V) Single Phase 15.2 A
Rated Operational Power AC-23A (P_e)	(230 V) Single Phase 2.6 kW
Conventional Thermal Current (I_{the})	Fully Enclosed 20 A
Rated Impulse Withstand Voltage (U_{imp})	4 kV
Rated Insulation Voltage (U_i)	acc. to IEC/EN 60664-1 690 V
Handle Color	Grey
Handle Type	Round handle
Standards	IEC 60947-1, -3
Number of Poles	2
Connecting Capacity Main Circuit	Screw Clamp 0.75 ... 4 mm ² Screw Clamp / PE Terminal 1pc, 0.75 ... 4 mm ²
Cable Cross-Section	0.75 ... 4 mm ²
Cable Entry Position	Up/Down
Cable Outlets Per Side	2xM20 / 2xM20
Degree of Protection	acc. to IEC 60529 IP67
Impact Resistance Rating	Housing IK09
Enclosure Material	Plastic
Mounted Auxiliary Contacts	0 NO, 0 NC
Number of Auxiliary Contacts NC	0
Number of Auxiliary Contacts NO	0

Environmental

RoHS Status	Following EU Directive 2011/65/EU
-------------	-----------------------------------

Certificates and Declarations (Document Number)

Declaration of Conformity - CE	1SCC343001D2702
Instructions and Manuals	1SCC390135M0204
RoHS Information	1SCC343001D2702

Container Information

Package Level 1 Units	box 1 piece
Package Level 1 Width	85 mm
Package Level 1 Depth / Length	103 mm
Package Level 1 Height	66 mm
Package Level 1 Gross Weight	0.15 kg
Package Level 1 EAN	6417019641225

Classifications

Object Classification Code	Q
ETIM 5	EC000216 - Switch disconnecter
ETIM 6	EC000216 - Switch disconnecter
ETIM 7	EC000216 - Switch disconnecter
ETIM 8	EC000216 - Switch disconnecter
WEEE Category	5. Small Equipment (No External Dimension More Than 50 cm)

Categories

Low Voltage Products and Systems → Enclosed Switches → Enclosed Switch-Disconnectors → Enclosed Switch-Disconnectors

