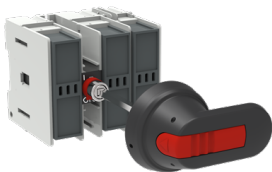




PRODUCT-DETAILS

OS32FF1214

OS32FF1214 SWITCH FUSE



General Information	
Extended Product Type	OS32FF1214
Product ID	1SCA108642R1001
EAN	6417019419077
Catalog Description	OS32FF1214 SWITCH FUSE
Long Description	Switch Fuses,Front Operated,3-pole,12 (Between the Poles),NFC,14x51,Handle and shaft included

ABB EcoSolutions	
Environmental Product Declaration - EPD	1SCC311204D0201

Material Compliance	
Conflict Minerals Reporting Template (CMRT)	9AKK108467A5658
REACH Declaration	1SCC011021D0201

RoHS Information	1SCC011020D0201
RoHS Status	Following EU Directive 2011/65/EU and Amendment 2015/863 July 22, 2019
Toxic Substances Control Act - TSCA	1SCC011025D0201

Popular Downloads

Data Sheet, Technical Information	1SCC311013C0201
Instructions and Manuals	1SCC311030M0202
Mechanical Drawings	OS32FF1214-2.stp
Environmental Product Declaration - EPD	1SCC311204D0201

Environmental

Pollution Degree	3
------------------	---

Ordering

Minimum Order Quantity	1 piece
Customs Tariff Number	85365080
Country of Origin	Lithuania (LT)

Dimensions

Product Net Width	106 mm
Product Net Height	97 mm
Product Net Depth / Length	105 mm
Product Net Weight	0.7 kg

Container Information

Package Level 1 Units	box 1 piece
Package Level 1 Width	130 mm
Package Level 1 Depth / Length	234 mm
Package Level 1 Height	130 mm
Package Level 1 Gross Weight	0.7 kg
Package Level 1 EAN	6417019419077

Technical

Cable Cross-Section	0.75 ... 10 mm²
Connecting Capacity	Stranded 0.75 ... 10 mm² Flexible 0.75 ... 10 mm²
Conventional Free-air Thermal Current (I _{th})	Θ = 40 °C 32 A
Conventional Thermal Current (I _{the})	Fully Enclosed 32 A

Fuse Size	14x51
Fuse System	NFC
Handle Type	Handle and shaft not included
Mounting Type	Base mounting
Number of Poles	3P
Operating Mode	Front Operated
Pollution Degree	3
Position of Line Terminals	Top In - Bottom Out, Bottom In - Top Out
Power Loss	at Rated Operating Conditions per Pole 2 W
Rated Conditional Short-Circuit Current (I_{nc})	(690 V) 80 kA
Rated Current (I_n)	Main Circuit 32 A
Rated Impulse Withstand Voltage (U_{imp})	12 kV
Rated Insulation Voltage (U_i)	1000 V
Rated Operational Current AC-21A (I_e)	(500 V) 32 A (690 V) 32 A
Rated Operational Current AC-22A (I_e)	(500 V) 32 A (690 V) 32 A
Rated Operational Current AC-23A (I_e)	(500 V) 32 A (690 V) 32 A
Rated Operational Power AC-23A (P_e)	(220 ... 240 V) 7.5 kW (400 V) 15 kW (415 V) 15 kW (500 V) 18.5 kW (690 V) 22 kW
Rated Operational Voltage	Main Circuit 690 V AC
Rated Short-time Withstand Current Low Voltage (I_{cw})	for 1 s 1 kiloampere rms
Standards	IEC 60947-3
Switches Operating Mechanism	12 (Between the Poles)
Terminal Type	Screw Terminals
Tightening Torque	2 N·m
Wire Stripping Length	Main Circuit 12 ... 14 mm Main Circuit 0.47 ... 0.55 in

Technical UL/CSA

Wire Stripping Length	Main Circuit 12 ... 14 mm Main Circuit 0.47 ... 0.55 in
Tightening Torque	2 N·m

Certificates and Declarations

ATEX Certificate	No certification needed
Declaration of Conformity - CE	1SCC311129D2702
DNV GL Certificate	1SCC311125D0203
UL Certificate	No certification needed

External Classifications and Standards		
Object Classification Code		Q
ETIM 8	EC001040 - Fuse switch disconnecter	
ETIM 9	EC001040 - Fuse switch disconnecter	
UNSPSC		39122233
IDEA Granular Category Code (IGCC)	5291 >> Fuse switch disconnecter	
eClass		V11.1 : 27371401
WEEE Category	5. Small Equipment (No External Dimension More Than 50 cm)	
E-Number (Finland)		3661968

Categories

Low Voltage Products and Systems → Switches → Switch Fuses

