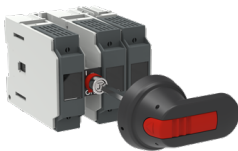




PRODUCT-DETAILS

# OS40FD12000

## OS40FD12000 SWITCH FUSE



General Information	
Extended Product Type	OS40FD12000
Product ID	1SCA108914R1001
EAN	6417019421797
Catalog Description	OS40FD12000 SWITCH FUSE
Long Description	Switch Fuses,Front Operated,3-pole,12 (Between the Poles),DIN,000,Handle and shaft not included,Switched - Fusible Pole

ABB EcoSolutions	
Environmental Product Declaration - EPD	1SCC311204D0201

Material Compliance	
Conflict Minerals Reporting Template (CMRT)	9AKK108467A5658
REACH Declaration	1SCC011021D0201

RoHS Information	1SCC011020D0201
RoHS Status	Following EU Directive 2011/65/EU and Amendment 2015/863 July 22, 2019
Toxic Substances Control Act - TSCA	1SCC011025D0201

## Popular Downloads

Data Sheet, Technical Information	1SCC311013C0201
Instructions and Manuals	1SCC311032M0203
Mechanical Drawings	OS40FD12000.stp
Environmental Product Declaration - EPD	1SCC311204D0201

## Environmental

Pollution Degree	3
------------------	---

## Ordering

Minimum Order Quantity	1 piece
Customs Tariff Number	85365080
Country of Origin	Lithuania (LT)

## Dimensions

Product Net Width	106 mm
Product Net Height	97 mm
Product Net Depth / Length	133 mm
Product Net Weight	0.7 kg 1.54 lb

## Container Information

Package Level 1 Units	box 1 piece
Package Level 1 Width	142 mm 5.59 in
Package Level 1 Depth / Length	234 mm 9.21 in
Package Level 1 Height	108 mm 4.25 in
Package Level 1 Gross Weight	1.033 kg 2.28 lb
Package Level 1 EAN	6417019421797

## Technical

Cable Cross-Section	0.75 ... 10 mm <sup>2</sup>
Connecting Capacity	Stranded 0.75 ... 10 mm <sup>2</sup> Flexible 0.75 ... 10 mm <sup>2</sup>
Conventional Free-air	Θ = 40 °C 40 A

Thermal Current ( $I_{th}$ )	
Conventional Thermal Current ( $I_{the}$ )	Fully Enclosed 40 A
Fuse Size	NH000
Fuse System	DIN
Handle Type	Handle and shaft not included
Mounting Type	Base mounting
Number of Poles	3P
Operating Mode	Front Operated
Pollution Degree	3
Position of Line Terminals	Top In - Bottom Out, Bottom In - Top Out
Power Loss	at Rated Operating Conditions per Pole 3.5 W
Rated Conditional Short-Circuit Current ( $I_{nc}$ )	(690 V) 80 kA
Rated Current ( $I_n$ )	Main Circuit 40 A
Rated Impulse Withstand Voltage ( $U_{imp}$ )	12 kV
Rated Insulation Voltage ( $U_i$ )	1000 V
Rated Operational Current AC-21A ( $I_e$ )	(500 V) 40 A (690 V) 40 A
Rated Operational Current AC-22A ( $I_e$ )	(500 V) 40 A (690 V) 40 A
Rated Operational Current AC-23A ( $I_e$ )	(500 V) 40 A (690 V) 40 A
Rated Operational Power AC-23A ( $P_e$ )	(220 ... 240 V) 11 kW (400 V) 18.5 kW (415 V) 18.5 kW (500 V) 22 kW (690 V) 30 kW
Rated Operational Voltage	Main Circuit 690 V AC
Rated Short-time Withstand Current Low Voltage ( $I_{cw}$ )	for 1 s 1 kiloampere rms
Standards	IEC 60947-3
Switches Operating Mechanism	12 (Between the Poles)
Terminal Type	Screw Terminals
Tightening Torque	2 N·m
Wire Stripping Length	Main Circuit 12 ... 14 mm Main Circuit 0.47 ... 0.55 in

## Technical UL/CSA

Wire Stripping Length	Main Circuit 12 ... 14 mm Main Circuit 0.47 ... 0.55 in
Tightening Torque	2 N·m

## Certificates and Declarations

ATEX Certificate	No certification needed
CCC Certificate	CCC OS200-250 2016
Declaration of Conformity - CE	1SCC311129D2702
DNV GL Certificate	1SCC311125D0203

UL Certificate

No certification needed

External Classifications and Standards

Object Classification Code	Q	
ETIM 8	EC001040 - Fuse switch disconnecter	
ETIM 9	EC001040 - Fuse switch disconnecter	
UNSPSC	39122233	
IDEA Granular Category Code (IGCC)	5291 >> Fuse switch disconnecter	
eClass	V11.1 : 27371401	
WEEE Category	5. Small Equipment (No External Dimension More Than 50 cm)	
E-Number (Finland)	3661969	

Categories

Low Voltage Products and Systems → Switches → Switch Fuses

