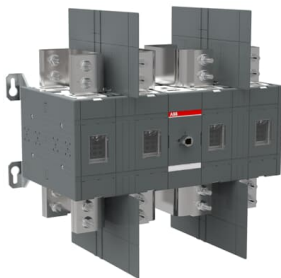




PRODUCT-DETAILS

# OT2000U22

## OT2000U22 SWITCH-DISCONNECTOR



General Information	
Extended Product Type	OT2000U22
Product ID	1SCA117334R1001
EAN	6417019493435
Catalog Description	OT2000U22 SWITCH-DISCONNECTOR
Long Description	4-pole, front operated, base mounted non-fusible disconnect switch, handle and shaft are not included, terminal bolt kit included

ABB EcoSolutions	
End Of Life Disassembling Instructions	1SCC301120M0201
Environmental Product Declaration - EPD	1SCC301300D0201

Material Compliance	
Conflict Minerals Reporting Template (CMRT)	9AKK108467A5658
REACH Declaration	1SCC011021D0201

RoHS Information	1SCC011020D0201
RoHS Status	Following EU Directive 2011/65/EU and Amendment 2015/863 July 22, 2019
Toxic Substances Control Act - TSCA	1SCC011025D0201

## Popular Downloads

Data Sheet, Technical Information	1SCC301020C0201
Instructions and Manuals	1SCC301094M0203
Mechanical Drawings	OT1600-2000U22.stp
Environmental Product Declaration - EPD	1SCC301300D0201

## Environmental

Degree of Protection	Front IP00
Pollution Degree	3

## Ordering

Minimum Order Quantity	1 piece
Customs Tariff Number	85365080
Country of Origin	Finland (FI)

## Dimensions

Product Net Width	615 mm
Product Net Height	546 mm
Product Net Depth / Length	415 mm
Product Net Weight	68.9 kg

## Container Information

Package Level 1 Units	box 1 piece
Package Level 1 Width	420 mm
Package Level 1 Depth / Length	650 mm
Package Level 1 Height	620 mm
Package Level 1 Gross Weight	72.1 kg
Package Level 1 EAN	6417019493435

## Technical

Degree of Protection	Front IP00
Distance Between Phases	Standard
Fourth Pole Position	Right Side
Fourth Pole Type	Switched - Simultaneous Function
Handle Type	Handle and shaft not included
Lock Type	No
Mechanical Durability	2500
Mounting Type	Base mounting
Number of Poles	4P
Operating Mode	Front operated

Pollution Degree	3
Position of Line Terminals	Top In - Bottom Out Bottom In - Top Out
Power Loss	at Rated Operating Conditions per Pole 96 W
Rated Impulse Withstand Voltage ( $U_{imp}$ )	12 kV
Rated Operational Voltage	Main Circuit 1000 V
Rated Short-time Withstand Current Low Voltage ( $I_{cw}$ )	for 1 s 50 kA
Special Functions	No
Standards	UL 98 / CSA C22.2 NO.4
Switches Operating Mechanism	Mechanism Between the Poles 22 (Between the Poles)
Terminal Type	Lug terminals
Tightening Torque	acc. IEC 60947-1 56 N·m

### Technical UL/CSA

Maximum Operating Voltage UL/CSA	600 V
Ampere Rating	2000 A
Tightening Torque	acc. IEC 60947-1 56 N·m
Tightening Torque UL/CSA	500 in·lb

### Certificates and Declarations

ATEX Certificate	No certification needed
cUL Certificate	cULus certificate OT1600-2000
Declaration of Conformity - CE	No declaration needed
UL Certificate	cULus certificate OT1600-2000
VDE Certificate	No certification needed

### External Classifications and Standards

Object Classification Code	Q
ETIM 8	EC000216 - Switch disconnecter
ETIM 9	EC000216 - Switch disconnecter (low voltage)
UNSPSC	39122233
IDEA Granular Category Code (IGCC)	5293 >> Switch disconnecter
eClass	V11.1 : 27371403
WEEE Category	4. Large Equipment (Any External Dimension More Than 50 cm)

---

## Categories

---

Low Voltage Products and Systems → Switches → Switch Disconnectors

