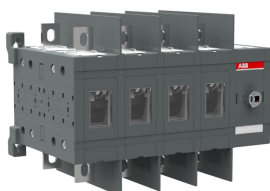


PRODUCT-DETAILS

OT200U40C

OT200U40C CHANGE-OVER SWITCH



General Information

Extended Product Type	OT200U40C
Product ID	1SCA022874R3060
EAN	6417019340197
Catalog Description	OT200U40C CHANGE-OVER SWITCH
Long Description	Handle and shaft has to be ordered separately

Ordering

Minimum Order Quantity	1 piece
Customs Tariff Number	85365080
Country of Origin	Finland (FI)

Popular Downloads

Data Sheet, Technical Information	1SCC303003C0201
Instructions and Manuals	1SCC303008M0203

Dimensions

Product Net Width	237 mm
Product Net Height	150 mm

Product Net Depth / Length	160 mm
Product Net Weight	3.99 kg 8.8 lb

Technical

Rated Operational Current AC-21A (I _e)	(380 ... 415 V) 250 A (500 V) 250 A (690 V) 250 A
Rated Operational Current AC-22A (I _e)	(380 ... 415 V) 250 A (500 V) 250 A (690 V) 250 A
Rated Operational Current AC-23A (I _e)	(380 ... 415 V) 250 A (500 V) 250 A (690 V) 250 A
Rated Operational Current AC-31B (I _e)	(380 ... 415 V) 250 A
Rated Operational Current AC-33B (I _e)	(380 ... 415 V) 250 A
Conventional Free-air Thermal Current (I _{th})	q = 40 °C 250 A
Rated Impulse Withstand Voltage (U _{imp})	12 kV
Rated Operational Voltage	1000 V
Rated Short-time Withstand Current Low Voltage (I _{cw})	for 1 s 8 kiloampere rms
Pollution Degree	3
Handle Color	Black
Handle Type	Handle and shaft not included
Fourth Pole Position	Right Side
Fourth Pole Type	Switched - Simultaneous Function Mechanism at the End of the Switch 40 (Right Side)
Distance Between Phases	Standard
Position of Line Terminals	Top In - Bottom Out, Bottom In - Top Out
Operating Mode	Front operated
Standards	UL 98 / IEC60947-3
Mounting Type	Base mounting
Number of Poles	4
Degree of Protection	Front IP20
Mechanical Durability	8000 cycle
Transition Type	Open

Technical UL/CSA

Horsepower Rating UL/CSA	(acc. to UL 240 V) 75 Hp (acc. to UL 480 V) 150 Hp (acc. to UL 600 V) 200 Hp
Ampere Rating UL/CSA	200 A

Environmental

Environmental Information	1SCC303050D0201
---------------------------	-----------------

Certificates and Declarations (Document Number)

Declaration of Conformity - CE	1SCC303006D0202
Environmental Information	1SCC303050D0201
Instructions and Manuals	1SCC303008M0203

Container Information

Package Level 1 Units	1 piece
Package Level 1 Width	186 mm 7.32 in
Package Level 1 Depth / Length	300 mm 11.81 in
Package Level 1 Height	185 mm 7.28 in
Package Level 1 Gross Weight	4.26 kg 9.39 lb
Package Level 1 EAN	6417019340197

Classifications

Object Classification Code	Q
ETIM 5	EC000216 - Switch disconnecter
ETIM 6	EC000216 - Switch disconnecter
ETIM 7	EC000216 - Switch disconnecter
ETIM 8	EC000216 - Switch disconnecter
UNSPSC	39122233
WEEE Category	5. Small Equipment (No External Dimension More Than 50 cm)

Categories

Low Voltage Products and Systems → Switches → Change-over and Transfer Switches → Manual Change-over Switches

