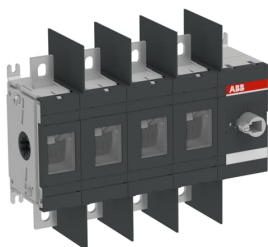


PRODUCT-DETAILS

OT400U40

OT400U40 SWITCH-DISCONNECTOR



General Information

Extended Product Type	OT400U40
Product ID	1SCA022748R1650
EAN	6417019242859
Catalog Description	OT400U40 SWITCH-DISCONNECTOR
Long Description	Handle and shaft must be ordered separately.

Ordering

Minimum Order Quantity	1 piece
Customs Tariff Number	85365080
Country of Origin	Finland (FI)

Popular Downloads

Data Sheet, Technical Information	1SCC301020C0201
Instructions and Manuals	1SCC301035M0019
Mechanical Drawings	1SCC301747F0001 1SCC301746F0001 OT315-400U40.stp OT315-400U40.igs

Dimensions

Product Net Width	280 mm
Product Net Height	220 mm
Product Net Depth / Length	105 mm
Product Net Weight	3.8 kg 8.3 lb

Technical

Rated Operational Current AC-22A (I_e)	(380 ... 415 V) 400 A (500 V) 400 A (690 V) 400 A
Rated Operational Current AC-23A (I_e)	(380 ... 415 V) 400 A (500 V) 400 A (690 V) 400 A
Rated Operational Power AC-23A (P_e)	(380 ... 415 V) 220 kW (500 V) 280 kW (690 V) 400 kW
Conventional Thermal Current (I_{the})	Fully Enclosed 400 A
Rated Impulse Withstand Voltage (U_{imp})	12 kV
Rated Insulation Voltage (U_i)	acc. to IEC/EN 60664-1 1000 V
Rated Operational Voltage	Main Circuit 1000 V
Rated Short-Circuit Making Capacity (I_{cm})	(690 V) 65 kA
Rated Short-time Withstand Current Low Voltage (I_{cw})	for 1 s 15 kA
Power Loss	at Rated Operating Conditions per Pole 10 W
Pollution Degree	3
Handle Type	Handle and shaft not included
Fourth Pole Position	Right Side
Fourth Pole Type	Switched - Simultaneous Function
Switches Operating Mechanism	Mechanism at the End of the Switch 40 (Right Side)
Distance Between Phases	Standard
Operating Mode	Front operated
Standards	IEC 60947-3 / UL 98 / CSA C22.2 NO.4
Special Functions	No
Mounting Type	Base mounting
Number of Poles	4
Degree of Protection	Front IP00
Terminal Type	Lug terminals
Tightening Torque	acc. IEC 60947-1 42.4 N·m
Mechanical Durability	16000
Lock Type	No

Technical UL/CSA

Maximum Operating Voltage UL/CSA	600 V
Horsepower Rating UL/CSA	(acc. to UL 200 V) 100 Hp (acc. to UL 208 V) 100 Hp (acc. to UL 240 V) 125 Hp (acc. to UL 480 V) 250 Hp

(acc. to UL 600 V) 350 Hp

Ampere Rating UL/CSA	400 A
----------------------	-------

Environmental

RoHS Status	Following EU Directive 2011/65/EU
Environmental Information	1SCC301266D0201

Certificates and Declarations (Document Number)

Declaration of Conformity - CE	1SCC301135D2704
Environmental Information	1SCC301266D0201
Instructions and Manuals	1SCC301035M0019
RoHS Information	1SCC301135D2704
UL Certificate	cULus certificate OT200-400

Container Information

Package Level 1 Units	box 1 piece
Package Level 1 Width	250 mm 9.8 in
Package Level 1 Depth / Length	290 mm 11.4 in
Package Level 1 Height	170 mm 6.7 in
Package Level 1 Gross Weight	4.1 kg 9 lb
Package Level 1 EAN	6417019242859

Classifications

Object Classification Code	Q
ETIM 5	EC000216 - Switch disconnecter
ETIM 6	EC000216 - Switch disconnecter
ETIM 7	EC000216 - Switch disconnecter
ETIM 8	EC000216 - Switch disconnecter
UNSPSC	39122233
eClass	V11.1 : 27371403
WEEE Category	5. Small Equipment (No External Dimension More Than 50 cm)

Categories

Low Voltage Products and Systems → Switches → Switch Disconnectors

