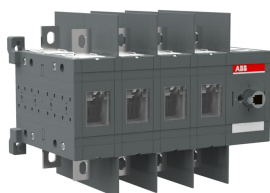


PRODUCT-DETAILS

# OT400U40C

## OT400U40C CHANGE-OVER SWITCH



### General Information

Extended Product Type	OT400U40C
Product ID	1SCA022874R3490
EAN	6417019340234
Catalog Description	OT400U40C CHANGE-OVER SWITCH
Long Description	Handle and shaft has to be ordered separately

### Ordering

Minimum Order Quantity	1 piece
Customs Tariff Number	85365080
Country of Origin	Finland (FI)

### Popular Downloads

Data Sheet, Technical Information	1SCC303003C0201
Instructions and Manuals	1SCC303008M0203

### Dimensions

Product Net Width	305 mm
Product Net Height	185 mm

Product Net Depth / Length	203 mm
Product Net Weight	7.66 kg 16.89 lb

## Technical

Rated Operational Current AC-21A (I <sub>e</sub> )	(380 ... 415 V) 400 A (500 V) 400 A (690 V) 400 A
Rated Operational Current AC-22A (I <sub>e</sub> )	(380 ... 415 V) 400 A (500 V) 400 A (690 V) 400 A
Rated Operational Current AC-23A (I <sub>e</sub> )	(380 ... 415 V) 400 A (500 V) 400 A (690 V) 400 A
Rated Operational Current AC-31B (I <sub>e</sub> )	(380 ... 415 V) 400 A
Rated Operational Current AC-33B (I <sub>e</sub> )	(380 ... 415 V) 400 A
Conventional Free-air Thermal Current (I <sub>th</sub> )	q = 40 °C 400 A
Rated Impulse Withstand Voltage (U <sub>imp</sub> )	12 kV
Rated Operational Voltage	1000 V
Rated Short-time Withstand Current Low Voltage (I <sub>cw</sub> )	for 1 s 15 kiloampere rms
Pollution Degree	3
Handle Color	Black
Handle Type	Handle and shaft not included
Fourth Pole Position	Right Side
Fourth Pole Type	Switched - Simultaneous Function Mechanism at the End of the Switch 40 (Right Side)
Distance Between Phases	Standard
Position of Line Terminals	Top In - Bottom Out, Bottom In - Top Out
Operating Mode	Front operated
Standards	UL 98 / IEC60947-3
Mounting Type	Base mounting
Number of Poles	4
Degree of Protection	Front IP20
Mechanical Durability	8000 cycle
Transition Type	Open

## Technical UL/CSA

Horsepower Rating UL/CSA	(acc. to UL 240 V) 125 Hp (acc. to UL 480 V) 250 Hp (acc. to UL 600 V) 350 Hp
Ampere Rating UL/CSA	400 A

## Environmental

Environmental Information	1SCC303050D0201
---------------------------	-----------------

---

## Certificates and Declarations (Document Number)

---

Declaration of Conformity - CE	1SCC303007D0202
Environmental Information	1SCC303050D0201
Instructions and Manuals	1SCC303008M0203

---



---

## Container Information

---

Package Level 1 Units	1 piece
Package Level 1 Width	240 mm 9.45 in
Package Level 1 Depth / Length	325 mm 12.8 in
Package Level 1 Height	218 mm 8.58 in
Package Level 1 Gross Weight	8.11 kg 17.88 lb
Package Level 1 EAN	6417019340234

---



---

## Classifications

---

Object Classification Code	Q
ETIM 5	EC000216 - Switch disconnecter
ETIM 6	EC000216 - Switch disconnecter
ETIM 7	EC000216 - Switch disconnecter
ETIM 8	EC000216 - Switch disconnecter
UNSPSC	39122233
WEEE Category	5. Small Equipment (No External Dimension More Than 50 cm)

---



---

## Categories

---

Low Voltage Products and Systems → Switches → Change-over and Transfer Switches → Manual Change-over Switches

