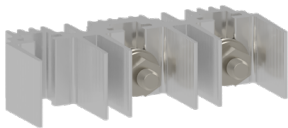




PRODUCT-DETAILS

# OTDCKIT400FS101

## OTDCKIT400FS101 Connection bar kit



General Information	
Extended Product Type	OTDCKIT400FS101
Product ID	1SCA157317R1001
EAN	6417019865782
Catalog Description	OTDCKIT400FS101 Connection bar kit
Long Description	OTDCKIT400FS101 Connection Bar Kit - Connection bar for connecting two pole-terminals. Includes screws and nuts. Suitable for DC Switches M-series: OTDC250...400UF_11 or OTDC250...400UF_02. Package of 1pc.

Material Compliance	
Conflict Minerals Reporting Template (CMRT)	9AKK108467A5658
REACH Declaration	1SCC301240D0201
RoHS Information	1SCC301239D0201
RoHS Status	Following EU Directive 2011/65/EU and Amendment 2015/863 July 22, 2019
Toxic Substances Control Act - TSCA	1SCC301321D0201

<b>Popular Downloads</b>	
Data Sheet, Technical Information	1SCC301022C0201
Instructions and Manuals	1SCC301099M0201 9AKK107492A6191

<b>Ordering</b>	
Minimum Order Quantity	1 piece
Customs Tariff Number	85389099
Country of Origin	Finland (FI)

<b>Dimensions</b>	
Product Frame Size	M
Product Net Width	61 mm 2.4 in
Product Net Height	141 mm 5.6 in
Product Net Depth / Length	35 mm 1.4 in
Product Net Weight	0.33 kg 0.73 lb

<b>Container Information</b>	
Package Level 1 Units	bag 1 piece
Package Level 1 Width	40 mm 1.6 in
Package Level 1 Depth / Length	150 mm 5.9 in
Package Level 1 Height	250 mm 9.8 in
Package Level 1 Gross Weight	0.34 kg 0.75 lb
Package Level 1 EAN	6417019865782

<b>Technical</b>	
Color	Metal
Special Functions	No

<b>Certificates and Declarations</b>	
Declaration of Conformity - CE	1SCC301227D2701

<b>External Classifications and Standards</b>	
Object Classification Code	Q
ETIM 8	EC002498 - Accessories/spare parts for low-voltage switch technology
ETIM 9	EC002498 - Accessories/spare parts for low-voltage switch technology
UNSPSC	39122221
IDEA Granular Category Code (IGCC)	5219 >> Switch part or accessory
eClass	V11.1 : 27371392

WEEE Category

Product Not in WEEE Scope

---

## Categories

---

Low Voltage Products and Systems → Switches → DC Switch-Disconnectors

