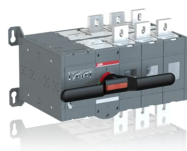


PRODUCT-DETAILS

# OTM1250E3CM230C

## OTM1250E3CM230C MOTORIZED C/O SWITCH



### General Information

Extended Product Type	OTM1250E3CM230C
Product ID	1SCA112676R1001
EAN	6417019453910
Catalog Description	OTM1250E3CM230C MOTORIZED C/O SWITCH
Long Description	OTM1250E3CM230C MOTORIZED C/O SWITCH, Direct mounted handle, Open transition

### Ordering

Minimum Order Quantity	1 piece
Customs Tariff Number	85365080
Country of Origin	Finland (FI)

### Popular Downloads

Data Sheet, Technical Information	1SCC303003C0201
Instructions and Manuals	1SCC303002M0204

### Dimensions

Product Net Width	507 mm
-------------------	--------

Product Net Height	306 mm
Product Net Depth / Length	297 mm
Product Net Weight	55 kg 507 lb

## Technical

Rated Operational Current AC-21A ( $I_e$ )	(380 ... 415 V) 1250 A (500 V) 1250 A (690 V) 1250 A
Rated Operational Current AC-22A ( $I_e$ )	(380 ... 415 V) 1250 A (500 V) 1250 A (690 V) 1250 A
Rated Operational Current AC-23A ( $I_e$ )	(380 ... 415 V) 1250 A (500 V) 1250 A (690 V) 1250 A
Rated Operational Current AC-31B ( $I_e$ )	(380 ... 415 V) 1250 A
Rated Operational Current AC-33B ( $I_e$ )	(380 ... 415 V) 1000 A
Rated Operational Power AC-23A ( $P_e$ )	(380 ... 415 V) 710 kW (500 V) 900 kW (690 V) 1200 kW
Conventional Free-air Thermal Current ( $I_{th}$ )	q = 40 °C 1250 A
Rated Impulse Withstand Voltage ( $U_{imp}$ )	12 kV
Rated Insulation Voltage ( $U_i$ )	1000 V
Rated Operational Voltage	1000 V
Rated Short-time Withstand Current Low Voltage ( $I_{cw}$ )	for 1 s 50 kiloampere rms
Motor Operational Voltage	220 ... 240 V AC
Power Loss	29 W
Pollution Degree	3
Handle Color	Black
Handle Type	Direct mounted handle Mechanism at the End of the Switch
Distance Between Phases	Standard
Position of Line Terminals	Top In - Bottom Out, Bottom In - Top Out
Operating Mode	Front operated
Mounting Type	Base mounting
Number of Poles	3
Degree of Protection	Front IP20
Transition Type	Open

## Environmental

Environmental Information	1SCC303036D0202
---------------------------	-----------------

## Certificates and Declarations (Document Number)

Declaration of	1SCC303027D0201
----------------	-----------------

## Conformity - CE

Environmental Information	1SCC303036D0202
Instructions and Manuals	1SCC303002M0204
RoHS Information	1SCC303036D0202

## Container Information

Package Level 1 Units	1 piece
Package Level 1 Width	440 mm
Package Level 1 Depth / Length	700 mm
Package Level 1 Height	565 mm
Package Level 1 Gross Weight	55 kg
Package Level 1 EAN	6417019453910

## Classifications

Object Classification Code	Q
ETIM 5	EC000216 - Switch disconnecter
ETIM 6	EC000216 - Switch disconnecter
ETIM 7	EC000216 - Switch disconnecter
ETIM 8	EC000216 - Switch disconnecter
UNSPSC	39122233
WEEE Category	4. Large Equipment (Any External Dimension More Than 50 cm)
E-Number (Finland)	3641780

## Categories

Low Voltage Products and Systems → Switches → Change-over and Transfer Switches → Motorized Change-over Switches

